

**SANTA FELICIA PROJECT
FERC LICENSE No. 2153-012**

Land Resource Management Plan

SEPTEMBER 2009

**UNITED WATER CONSERVATION DISTRICT
106 N. 8TH STREET
SANTA PAULA, CALIFORNIA 93060**

Table of Contents

SECTION 1.0 Introduction	1-1
SECTION 2.0 Project Description	2-1
2.1 FERC Project Boundary	2-1
2.2 FERC Project Facilities	2-1
SECTION 3.0 Fire Management and Response Plan	3-1
3.1 FERC License Requirements.....	3-1
3.2 Fire Plan Goals.....	3-2
3.3 Roles, Responsibilities, and Coordination.....	3-2
3.3.1 United and Contractor(s)	3-2
3.3.2 USDA - Forest Service	3-3
3.3.3 Ventura County Fire Department	3-3
3.3.4 Consistency and Coordination with other FERC Required Project Management Plans.....	3-3
3.3.5 Periodic Review and Update.....	3-3
3.4 Fire Suppression Personnel, Tools, and Equipment	3-3
3.4.1 Fire Suppression Personnel.....	3-4
3.4.2 Fire Suppression Equipment.....	3-4
3.4.3 Required Tools and Equipment for Activities on USDA-FS Lands (NSFL)	3-4
3.5 Regulatory Requirements	3-5
3.6 Fire Risk and Fire Hazard Associated with Project-induced Recreation	3-6
3.7 Precautionary Measures	3-7
3.7.1 Public Education and Awareness.....	3-7
3.7.2 Project Activity Levels (PALs).....	3-7
3.8 Fire Hazard Reduction Measures.....	3-7
3.8.1 Project Hazardous Fuels Treatment.....	3-7
3.8.2 Best Management Practices Associated with Fire Prevention Activities.....	3-8
3.9 Fire Suppression Plan	3-8
3.9.1 Fire Suppression Responsibilities.....	3-8
3.9.2 Fire Response Access Roads and Helispots.....	3-9
3.9.3 Key Project and Agency Personnel Contact Directory	3-9
SECTION 4.0 Visual Management Plan	4-1
4.1 FERC License Requirements.....	4-1
4.2 Visual Plan Goals.....	4-1
4.3 Roles, Responsibilities, and Coordination.....	4-2
4.3.1 United and Stakeholder(s)	4-2
4.3.2 Consistency and Coordination with other FERC Required Project Management Plans.....	4-2

4.3.3	Periodic Review and Update.....	4-2
4.4	Existing Visual Setting and Resource Management Plans	4-3
4.4.1	Existing Project Facilities	4-3
4.4.2	Scenic Routes.....	4-3
4.4.3	Regional Resource Management Plans.....	4-3
4.5	Implementation Actions.....	4-4
4.5.1	Visual Enhancement/Mitigation Techniques.....	4-4
4.5.2	Visual Resource Protection Plan Process	4-5
4.5.3	Implementation Schedule	4-5
SECTION 5.0 Sign Plan.....		5-1
5.1	FERC License Requirements.....	5-1
5.2	Sign Plan Goals and Guidelines.....	5-1
5.3	Roles, Responsibilities, and Coordination	5-3
5.3.1	Consistency and Coordination with other FERC Required Project Management Plans.....	5-3
5.3.2	Periodic Review and Update.....	5-3
5.4	Existing Setting and Project Sign Guidelines	5-3
5.4.1	Typical Types of Project Signs	5-3
5.4.2	Project Sign Guidelines	5-4
5.5	Sign Inspection and Maintenance	5-7
5.6	Sign Plan Implementation.....	5-8
SECTION 6.0 Roads and Facilities Maintenance Plan		6-1
6.1	FERC License Requirements.....	6-1
6.2	Road Plan Goals.....	6-3
6.3	Project Roads Covered by this Plan.....	6-3
6.4	Roles, Responsibilities, and Coordination	6-4
6.4.1	Consistency and Coordination with other FERC Required Project Management Plans.....	6-4
6.4.2	Periodic Review and Update.....	6-4
6.5	Road Rehabilitation/Relocation	6-4
6.6	Road Maintenance and Measures to Minimize or Eliminate Potential Impacts from Road Maintenance Activities	6-4
6.6.1	Erosion Control.....	6-4
6.6.2	Vegetation and Noxious Weed Management	6-5
6.6.3	Biological Resource Protection	6-5
6.7	Operational Plans.....	6-6
6.7.1	Traffic Safety Plan.....	6-6
6.7.2	Water Quality Monitoring Plan	6-6
SECTION 7.0 Annual Consultation		7-1
SECTION 8.0 References.....		8-1

Appendices

Appendix A – Applicable Fire-Related Excerpts from State of California Public Resources Code

Appendix B – Fire Suppression Action Plan

Appendix C – Fire-Related Signage at Lake Piru Campground Facilities

Appendix D – USDA-FS Los Padres National Forest Project Activity Levels

Appendix E – Project Sign Inventory

Tables

Table 1	Fuels Reduction and Clearance Distances around Project Facilities	3-7
Table 2	Visual Plan Implementation Schedule	4-5
Table 3	Types of Project Signs	5-4
Table 4	Letter Height Guidelines for Project Signs	5-5
Table 5	Letter Height Guidelines for Highway/Roadway Signs in the Project Area	5-6

Figures

Figure 1	Project Facilities and FERC Boundary
----------	--------------------------------------

Introduction

This Land Resource Management Plan (LRMP) has been prepared for the Santa Felicia Project (FERC Project No. 2153-012) to comply with Article 413 and 4(e) Condition Nos. 17 and 20 of Appendix A of the *Order Issuing the New License* dated September 12, 2008 (FERC 2008). The Project is located in eastern Ventura County approximately 5 miles north of Piru, California and is owned and operated by the United Water Conservation District (United or Licensee). Article 413 of the license issued by FERC in September 2008 requires that, within 1-year of license issuance, United develop a Land Resources Management Plan (LRMP) that incorporates and consolidates the four land resource management plans required by the United States Department of Agriculture Forest Service (USDA-FS or Forest Service) in Article 4(e) Condition Nos. 17(a), 17(b), 17(c), and 20 of Appendix A of the license. Specifically, these plans consist of the following:

- Fire Management and Response Plan [Condition No. 17(a)];
- Visual Management Plan [Condition No. 17(b)];
- Sign Plan [Condition No. 17(c)]; and,
- Roads and Facilities Management Plan (Condition No. 20).

This LRMP includes the four required land resource plans and is organized as follows:

- Section 2.0 provides a description of the FERC Project boundary and the FERC Project facilities;
- Section 3.0 presents the Fire Management and Response Plan;
- Section 4.0 describes the Visual Management Plan;
- Section 5.0 provides the Sign Plan;
- Section 6.0 presents the Roads and Facilities Management Plan;
- Section 7.0 discusses the Annual Consultation Meeting; and
- Section 8.0 presents the references used in the preparation of the LRMP.

Project Description

This section provides a description of the FERC Project boundary and the FERC Project facilities.

2.1 FERC PROJECT BOUNDARY

The existing FERC Project Boundary encompasses approximately 1,552 acres of land as shown in Figure 1. Approximately 201 acres of the land within the Project boundary is situated within the Los Padres National Forest and is owned by the USDA-FS. Of the USDA-FS land, approximately 121 acres are inundated by Lake Piru at the maximum water surface elevation of 1,055 feet mean sea level (msl).

2.2 FERC PROJECT FACILITIES

As specified in the FERC license, the Project facilities include the following:

- Santa Felicia Dam consisting of an earth-filled dam that is 200 feet high and 1,260 feet long with a crest elevation of 1,075 feet msl;
- An ungated spillway that is 450 feet long and is situated adjacent to and west of the dam with a crest elevation of 1,055 feet msl;
- Lake Piru which is a surface water reservoir with a maximum capacity of 87,187 acre-feet, a useable storage capacity of 67,669 acre-feet, and a surface area of 1,213 acres at the spillway crest elevation of 1,055 feet msl;
- A powerhouse at the base of Santa Felicia Dam that contains 2 generating units with a total installed capacity of 1,420 kW;
- A generator lead to a step-up transformer that is 150 feet long; and,
- Recreational facilities including:
 - Lower Oaks and Oak Lane campgrounds;
 - Whitewater boating take-out at the upper end of Lake Piru (located near the USFS closure gate);
 - Lake Piru Marina;
 - Juan Fernandez Boat Launch Area; and,
 - Reasoner Canyon Picnic Area and Overflow Area.

The locations of these facilities are presented in Figure 1.

Fire Management and Response Plan

The Fire Management and Response Plan (Fire Plan) has been prepared to provide guidance and outline responsibilities related to fire management and response for the Santa Felicia Project. The Fire Plan applies to both United-owned lands within Ventura County and lands within the Los Padres National Forest. The planning guidelines that were used to define fire management and response objectives for the Project were derived from the Los Padres National Forest Land and Resource Management Plan, related fire management/fire prevention plans, and Ventura County Zoning and Fire Ordinances. This section discusses the FERC license requirements for the Fire Plan, the Fire Plan goals, roles, and responsibilities for fire management and response, fire response equipment and personnel, regulatory requirements, fire risk and hazard associated with recreation, precautionary measures, fire hazard reduction measures, and the fire suppression plan.

3.1 FERC LICENSE REQUIREMENTS

Article 4(e), Condition No. 17(a) in Appendix A of the *Order Issuing the New License* dated September 12, 2008 requires that, within 1-year of license issuance, United prepare a Fire Management and Response Plan that addresses the following:

(1) Fuels Treatment/Vegetation Management

- *Identification of fire hazard reduction measures to prevent the escape of Project-induced fires.*

(2) Prevention

- *Availability of fire access roads, community road escape routes, helispots to allow aerial firefighting assistance in the steep canyon, water drafting sites and other fire suppression strategies.*
- *Address fire danger and public safety associated with Project-induced recreation, including fire danger associated with dispersed camping, existing and proposed developed recreation sites, trails, and vehicle access.*

(3) Emergency Response Preparedness

- *Analyze fire prevention needs including equipment and personnel availability.*

(4) Reporting

- *Licensee shall report any Project-related fires to the Forest Service within 24 hours.*

(5) Fire Control/Extinguishing

- *Provide the Forest Service with a list of the locations of available fire suppression equipment and the location and availability of fire suppression personnel.*

In addition, Article 4(e), Condition No. 17(a) in Appendix A of the *Order Issuing the New License* dated September 12, 2008 requires that the fire prevention measures conform to water quality protection practices as enumerated in the USDA-FS Pacific Southwest Region *Water Quality Management for National Forest System Lands in California-Best management Practices*.

3.2 FIRE PLAN GOALS

The goals of the Fire Plan are as follows:

- to increase awareness of the potential for fires;
- to enhance preparedness for responding to fires;
- to establish guidelines for the prevention of Project and associated human caused fires.; and,
- to specify fire response and notification procedures to ensure prompt and aggressive action in the event that a fire does occur.

3.3 ROLES, RESPONSIBILITIES, AND COORDINATION

United is responsible for the implementation of the requirements of this Fire Plan including coordination with the USDA-FS and Ventura County Fire Department and compliance with other plans specified in the *Order Issuing the New License* dated September 12, 2008. The roles and responsibilities are presented below.

3.3.1 United and Contractor(s)

United and/or its Contractor Job Site Administrator(s):

- Shall abide by the requirements of this Fire Plan;
- Shall take all steps necessary to prevent his/her employees, subcontractors and their employees from setting fires not required in completion of Project activities, shall be responsible for attempting to prevent the escape of fires set directly or indirectly as a result of Project activities and shall attempt to extinguish all such fires which may escape, to the extent United personnel in the Project area have the equipment and knowledge to extinguish such fires;
- Shall report any Project related fires on USDA-FS lands to the USDA-FS within 24 hours; and,
- Shall fully cooperate with the USDA-FS on all fire investigations for fires occurring on USDA-FS lands and/or the jurisdictional agency for fires outside of the USDA-FS lands. Except to the extent the material and witness are subject to the Attorney Client privilege or attorney work product privilege, or are otherwise privileged or confidential, United shall preserve all physical evidence and, upon request from the USDA-FS and/or the jurisdictional agency, shall provide all physical evidence and all material and witnesses over which United has control, related to the fire and its investigation including:
 - All investigation reports;
 - All witness statements;
 - All photographs;

- All drawings;
- All analysis of cause and origin; and,
- All other, similar materials and documents regardless of how collected or maintained.

3.3.2 USDA - Forest Service

The USDA-FS may conduct one or more inspections for compliance with this Fire Plan. The number, timing, and scope of such inspections will be at the discretion of the USDA-FS. Such inspections do not relieve United of responsibility for correcting violations of the Fire Plan.

With regard to fire investigations and evidence produced by United and given to the USDA-FS, the USDA-FS shall provide United with reasonable access to the physical evidence and documents that United requires in order to defend any and all claims that may arise from a fire within the Project boundary, to the extent that such access is not precluded by ongoing criminal or civil litigation.

3.3.3 Ventura County Fire Department

In the event that a fire occurs within the jurisdiction of the Ventura County Fire Department, the County will be the primary responding agency. The County will also be responsible for the investigation of the fire.

3.3.4 Consistency and Coordination with other FERC Required Project Management Plans

Elements of the Fire Plan will be used in the development of other FERC required Project management plans including the *Vegetation and Noxious Weed Management Plan* which will identify and describe detailed measures for vegetation management practices that control the potential fuel supply and mitigate the risk of Project-related fires. This Fire Plan will also be utilized in the development and/or updating of the following Project management plans:

- Biological Resource Management Plans;
- Sign Plan;
- Roads and Facilities Management Plan; and,
- Public Safety Plan.

3.3.5 Periodic Review and Update

United may review and amend this Fire Plan annually on its anniversary date through coordination with the USDA-FS.

3.4 FIRE SUPPRESSION PERSONNEL, TOOLS, AND EQUIPMENT

This section describes the existing fire-related resources associated with the Project and the requirements for work on USDA-FS lands.

3.4.1 Fire Suppression Personnel

United staff have access to and receive annual training for the use of fire extinguishers, but are not qualified for wildland fire suppression duties. However, United personnel are available to represent United concerns, provide technical information related to the Project, and support the Ventura County Fire Department, USDA-FS, and the California Department of Forestry and Fire Protection (CAL FIRE) in and adjacent to the Project.

3.4.2 Fire Suppression Equipment

United does not own or operate fire-suppression-specific vehicles (e.g. fire trucks) within the Project area. However, fire hydrants are located within the Project boundary for use by emergency responders including the Ventura County Fire Department, USDA-FS, and CAL-FIRE. The fire hydrants are maintained by United and are located at:

- Lake Piru Marina - Dry Storage Area (1);
- Lake Piru Marina - Snack Bar Area (1);
- Lake Piru Ranger Office (1);
- Oak Lane Campground (1);
- Lower Oaks Campground (1);
- Reasoner Canyon Picnic Area (2);
- Along Santa Felicia Canyon Road - from just below the recreation area entrance kiosk up to the Reasoner Canyon Picnic Area (6);
- Juan Fernandez Boat Launch Area (1); and,
- Santa Felicia Dam – (1).

In addition to these hydrants, a fire hose connection is located along the penstock near the outlet works and a drafting hydrant is located near the Santa Felicia Dam tender's house.

United personnel have access to fire extinguishers that are U.L. rated at 2-A:10-B:C, or larger. The extinguishers are inspected annually at a minimum and are located:

- On each truck, personnel vehicle, tractor, grader, and other heavy equipment; and,
- Within the Hydroplant Building at the Santa Felicia Dam, the Facility Shop, temporary offices, and in the vicinity of the Fueling Area.

In addition, United personnel have access to shovels and axes that are located within buildings and vehicles.

3.4.3 Required Tools and Equipment for Activities on USDA-FS Lands (NSFL)

Project activities conducted on USDA-FS lands between May 15th and October 31st that involve the use of equipment are required to comply with the following:

- (1) All diesel and/or gasoline-operated engines, both stationary and mobile, and all flues used in any contract and camp operations shall be equipped with spark arresters that meet USDA-FS standards set forth in the National Wildfire Coordinating Group publication

for Multi-position Small Engines, #430-1, or General Purpose and Locomotive, #430-2. Spark arresters are not required on equipment powered by exhaust-driven turbo-charged engines or motor vehicles equipped with a maintained muffler as defined in California Public Resources Code (CPRC), Section 4442 and 4443. (additional information on federal requirements for spark arrestors is provided at: <http://www.fs.fed.us/eng/pubs/html/03511304/03511304.htm>).

- (2) Each piece of equipment used in conjunction with performance of a project shall have the following hand tools and/or equipment available for emergency use (CPRC 4427, 4428, and 4431):
- For each truck, personnel vehicle, tractor, grader, and other heavy equipment, the following equipment is required: one shovel; one axe (or Pulaski); and, a fully charged fire extinguisher that is U.L. rated at 2-A:10-B-C, or larger.
 - For each mechanized harvesting machine equipped with hydraulic systems that are powered by an internal combustion engine (e.g., chipper, feller/buncher, harvester, forwarder, stroke de-limber, etc.) except for tractors and skidders, at least two fire extinguishers that are U.L. rated at 4A:80-B:C, or equivalent, are required. In addition, concentrations of wood dust and debris shall be removed from such equipment daily.
 - For each welder, one shovel and one backpack equipped with a 5-gallon water-filled tank and pump.
 - For each gasoline-powered tool (including, but not limited to, chain saws, soil augers, rock drills, etc.), one shovel or one pressurized chemical fire extinguisher are required. Fire extinguishers shall be of the type and size set forth in the CPRC Section 4431. Shovels must be kept within 100 feet from each chain saw when used off cleared landing areas.

3.5 REGULATORY REQUIREMENTS

United will comply with the following regulations and associated permit requirements:

- (1) All applicable laws of the State of California and applicable California Public Resource Codes (excerpts included in Appendix A)
- (2) A special written permit will be obtained from the appropriate National Forest District Ranger, CAL FIRE Battalion Chief, or any of their officially designated representatives before engaging in any of the following activities on USDA-FS lands:
 - Blasting and Storage of Explosives and Detonators (Explosives Permit required by California Health & Safety Code, Section 12101);
 - Burning;
 - Camp, Lunch, and Warming Fires;
 - Welding and Cutting; and,
 - Any activity that requires an air pollution control permit from a local, state, or federal regulatory agency.

- (3) Permits are required for administrative burning. Administrative burning is defined as burning of small piles for hazard reduction and routine maintenance around facilities and along right of ways. Permits are issued by Ventura County. No administrative burning is to occur on USDA-FS lands. United will ensure that the material to be burned is of the appropriate size and placement, so that during burning, no damage will result to adjacent transmission lines, poles, infrastructure or other facilities/improvements.
- (4) Smoking shall not be permitted on USDA-FS lands during fire season, except in a barren area or in an area cleared to mineral soil at least three feet in diameter (CPRC 4423.4). In areas closed to smoking, the USDA-FS representative may approve special areas to be used for smoking. Designated smoking areas shall be signed by United, and United's supervisory personnel will require compliance with these rules. Under no circumstances will smoking be permitted during fire season while employees are operating light or heavy equipment, or walking or working in grass and woodlands.
- (5) Project equipment service areas, parking areas, and gas and oil storage areas shall be cleared of all flammable material for a radius of at least ten (10) feet. Small mobile or stationary internal combustions engine sites shall be cleared of flammable material for a radius of at least ten (10) feet from such engine. All sites within USDA-FS lands must be approved, in writing, by the USDA-FS Administrator except for sites that have been previously approved in writing or sites that are located within Project boundaries and previously used for such purpose.
- (6) When engaging in welding activities, United personnel shall confine Project welding activity to cleared areas having a minimum radius of ten (10) feet measured from place of welding.
- (7) If blasting, United shall use electric caps only. When blasting is necessary in slash areas, a watchperson equipped with shovel and a water-filled backpack can (5 gallon), with hand pump, shall remain in the immediate area for at least one (1) hour after blasting has been completed.
- (8) All Project-originating oily rags and used oil filters will be removed from USDA-FS lands;
- (9) Use of glass bottles and jugs for containers within the Project site shall be prohibited on USDA-FS lands.
- (10) As soon as feasible, after initial control action is taken, within one (1) hour, United shall notify USDA-FS of any fires along roads or lands within USDA-FS lands.
- (11) United shall furnish a serviceable telephone, radio-telephone, or radio system at each operation within USDA-FS lands allowing staff to contact emergency responders. United personnel will also contact the designated USDA-FS Dispatch Center, as necessary, in accordance with the *Fire Suppression Action Plan* in Appendix B of this Fire Plan. The communication shall provide prompt and reliable communications between the Project operations and emergency responders upon the discovery of a fire on Project lands.

3.6 FIRE RISK AND FIRE HAZARD ASSOCIATED WITH PROJECT-INDUCED RECREATION

Potential fire danger on lands surrounding Lake Piru in the vicinity of USDA-FS lands are characterized by the USDA-FS fire hazard and fire risk ratings. No Project-related recreation facilities are located on USDA-FS lands.

3.7 PRECAUTIONARY MEASURES

The following discusses precautionary measures to enhance fire prevention and awareness.

3.7.1 Public Education and Awareness

Within the Project recreations areas, United will implement a public fire prevention and awareness program. Restrictions related to the control of recreational fires have been established and are enforced by United personnel. A list of restrictions related to campfires, fireworks, and firearms has been and will remain posted at the entrance to the Lake Piru recreation area and throughout the Project area. Dispersed camping is not allowed within the Lake Piru area, therefore, campfires are prohibited outside of the fire rings provided in developed campsites. The current language of the sign is included in Appendix C. The sign will be updated and amended if fire-related restrictions are modified. In regards to enforcement, recreation area rangers issue citations to campers that leave fires unattended.

3.7.2 Project Activity Levels (PALs)

Project Activity Levels (PALs) have been established by the USDA-FS to define restrictions and precautions that must be observed while working within USDA-FS lands (USDA-FS 2005a). The PAL system consists of an active management tool that is intended to reduce the risk of equipment-use fires. United shall conform to the limitations or requirements of the PALs established by the USDA-FS before starting work each day when working on USDA-FS lands. The PALs and associated restrictions are provided in Appendix D.

3.8 FIRE HAZARD REDUCTION MEASURES

The following presents the proposed fire hazard reduction measures and best management practices (BMPs) associated with fire prevention activities.

3.8.1 Project Hazardous Fuels Treatment

United's hazardous fuels and vegetation management goals and strategies are primarily focused on mitigating the risk of ignition and preventing the escape of Project-related fires. Table 1 identifies clearance distances that are maintained around Project facilities through the use of brush mowers, weed whackers, discing, grading, and herbicide application. United also manages vegetation in the vicinity of Santa Felicia Dam and designated helicopter landing areas. United's vegetation management activities comply with Ventura County Fire Department standards and are subject to revision upon revision of the County standards.

Table 1 Fuels Reduction and Clearance Distances around Project Facilities		
Project Facility	Clearance Distance	Frequency*
Recreation Buildings	100 feet	Quarterly
Facility Buildings	100 feet	Quarterly
Roads	10 feet – on each side of the traveled section 13 feet 6 inches– overhanging branches	Quarterly
Campgrounds	30 feet from outer edge of campground	Quarterly

Overflow parking areas	30 feet from outer edge of parking area	Quarterly
Dam		Quarterly

*Frequency may vary depending on the growth rates of surrounding vegetation.

3.8.2 **Best Management Practices Associated with Fire Prevention Activities**

United does not currently conduct fire prevention measures on USDA-FS lands. However, if, at any time in the future, United implements a fire prevention program on USDA-FS lands, the measures will comply with the USDA-FS Pacific Southwest Region *Water Quality Management for National Forest System Lands in California – Best Management Practices* or current USDA-FS BMP policy (USDA-FS 2000). In addition, any equipment brought into the Project site from outside of the Lake Piru region for the purposes of fire suppression shall be washed to remove seeds prior to use, if feasible.

3.9 **FIRE SUPPRESSION PLAN**

A summary of the fire suppression plan responsibilities, access, and contacts is provided below and more detailed information is presented in the *Fire Suppression Action Plan* included in Appendix B.

3.9.1 **Fire Suppression Responsibilities**

The roles and responsibilities associated with fire suppression activities are as follows:

- (1) United shall do everything reasonably within its power, and shall require its employees, contractors, and employees of contractors to do everything reasonably within their power, both independently and upon the request of officers of the USDA-FS, to prevent fires resulting from Project-related activities, to make advanced preparations for suppression of, and to suppress fires on lands occupied or used under the license.
- (2) As part of this Fire Plan, personnel will be supplied from project crews to assist in the response to fires caused by United or its contractors, as they are needed by the Incident Commander and based upon the qualifications of the project crew personnel.
- (3) In the event of a fire within the Project area, the designated United responder and/or other United personnel, as necessary, will implement the *Fire Suppression Action Plan* (Appendix B).
- (4) The *Fire Suppression Action Plan* (Appendix B) provides information for initiating fire suppression activities, reporting procedures, key contacts list, and project-specific requirements, etc. The document contains titles, addresses, and phone numbers which will be updated, as needed.
- (5) Copies of the Fire Suppression Action Plan will be distributed to all appropriate United personnel, contractor(s), and USDA-FS staff, and they will be posted in selected locations throughout the Project area.
- (6) All involved United personnel and/or its contractors' personnel will be informed about the Fire Suppression Action Plan and cautioned about the fire hazards immediately upon reporting to the project site.
- (7) Emergency measures will be coordinated with the USDA-FS on weekends, holidays, or outside working hours for all fires occurring on USDA-FS lands.

3.9.2 Fire Response Access Roads and Helispots

Fire access roads within and adjacent to the Project area are identified in Appendix B. The primary fire access/escape routes are Piru Canyon Road and Santa Felicia Canyon Road. When necessary, Santa Felicia Canyon Fire Road can be used as a secondary access/escape route.

Ventura County Fire Department has designated and maintains three helispots located in the vicinity of the Project. These helispots are identified in Appendix B. During the suppression of a fire, water is drafted by emergency responders at the following locations:

- Penstock;
- Fire hydrant at the dam;
- Fire hydrants in the recreation facilities; and,
- Reservoir (at helispots or through the use of superscooper planes).

3.9.3 Key Project and Agency Personnel Contact Directory

The key fire response contacts for United, USDA-FS, and the Ventura County Fire Department are provided in Appendix B.

Visual Management Plan

This Visual Management Plan (Visual Plan) is intended to provide guidance related to the appearance of structures associated with the Santa Felicia Project. The aesthetic/visual appearance of the Project influences the overall experience of visitors to the project area and surrounding Los Padres National Forest. This Visual Plan addresses Project facilities and lands within the FERC project boundary. This section discusses the FERC license requirements for the Visual Plan, the Visual Plan goals, roles and responsibilities, the existing visual setting and resource management, and implementation actions.

4.1 FERC LICENSE REQUIREMENTS

Article 4(e), Condition No. 17(b) in Appendix A of the *Order Issuing the New License* dated September 12, 2008 requires that, within 1-year of license issuance, United prepare a Visual Management Plan that addresses the following:

- *Clearings, spoil piles, and project facilities, such as diversion structures, penstocks, pipes, ditches, powerhouses, other buildings, transmission lines, corridors, and access roads.*
- *Facility configurations, alignments, building materials, colors, landscaping, and screening.*
- *An Implementation schedule to bring the project facilities into compliance with applicable National Forest Land and Resource Management Plan direction.*
- *Mitigation measures that shall include, but are not limited to:*
 - *Surface treatments with colors and materials that are in harmony with the surrounding landscape.*
 - *Use of native plant species to screen facilities from view, where appropriate.*
 - *Reshaping and vegetating disturbed areas to blend with surrounding scenic characteristics.*
 - *Development of scenic overlooks along scenic routes.*
 - *Removal of project induced debris piles, which detract from the visual quality.*
 - *General maintenance and upkeep of facilities.*

4.2 VISUAL PLAN GOALS

Successful implementation of the Visual Plan requires an understanding of the Project site and is based on currently available information. This Visual Plan applies to all project facilities and lands within the FERC Project boundary (Figure 1), regardless of land ownership. Future construction, upgrades to and maintenance of facilities within the FERC Project boundary will be conducted in compliance with the Visual Plan; however, existing facilities will be “grandfathered” in until upgrades/repairs are necessary.

The goals of the Visual plan are as follows:

- Provide a framework for the management of visual resources related to the Project throughout the term of the License.
- Guide the decision making process and facilitate the aesthetic and visual enhancement and management of Project facilities and land with the Project area.
- Provide a summary of existing aesthetic/visual resource conditions in the Project area
- Identify potential visual resource protection and enhancement measures that may be used during the term of the License.
- Address Scenic Integrity Objectives as outlined in the Land Resource Management Plan for the Los Padres National Forest.

4.3 ROLES, RESPONSIBILITIES, AND COORDINATION

United is responsible for the implementation of the requirements of this Visual Plan including coordination with and compliance with other plans specified in the *Order Issuing the New License* dated September 12, 2008 as discussed below.

4.3.1 United and Stakeholder(s)

Following USDA-FS and FERC approval, United will ensure that actions taken to implement the Visual Plan are in compliance with other Project resource management plans. Additionally, United will periodically review changes to potential visual resources and update the Visual Plan to reflect significant changes to the visual characteristics of the Project area or technological advances. United facility operations and maintenance staff will have access to the Visual Plan, and be trained to implement applicable actions to help achieve compliance with the Visual Plan.

4.3.2 Consistency and Coordination with other FERC Required Project Management Plans

This Visual Plan will be utilized and coordinated with the development and/or updating of the following Project Management Plans to reduce impacts to the visual quality of the Project area:

- Biological Resource Management Plans;
- Vegetation and Noxious Weed Management Plan;
- Roads and Facilities Management Plan;
- Fire Management and Response Plan; and,
- Spoil Management, Erosion, and Sediment Control Plan.

Prior to implementation of actions that may affect visual resources, the action will be reviewed and measures may be considered to mitigate for significant impacts to visual resources. Potential actions that may impact visual resources include the clearing of vegetation, construction, and significant maintenance activities such as grading.

4.3.3 Periodic Review and Update

Over the term of the new license, unanticipated changes may affect the visual quality of the Project area or new technologies may provide additional tools for the management of visual resources. United will review the Visual Plan every 10 years (see Section 4.5.3 Implementation Schedule) and update it if there

are significant changes to the visual character of the Project area. Stakeholders will be given the opportunity to comment on Visual Plan and LRMP updates as outlined in Section 7.0.

4.4 EXISTING VISUAL SETTING AND RESOURCE MANAGEMENT PLANS

The existing visual setting and resource management plans are discussed below.

4.4.1 Existing Project Facilities

Facilities associated with the Project are located along Lake Piru from the Juan Fernandez Boat Launch Area in the north to Santa Felicia Dam and associated facilities in the south (Figure 1). A portion of the Project is visible from the Ojai-Piru Front Country portion of Los Padres National Forest which has a moderate to high scenic integrity level indicating that the valued landscape character appears slightly altered or intact.

The aesthetic resource management system used by the USDA-FS (USDA-FS 2005b) classifies views into three major distance zones: 1) foreground; 2) middleground; 3) and, background. Of these, the foreground and middleground distance zones apply to the Project. In the foreground, which is defined as distances from 0 to 0.5 miles, the viewshed is dominated by views of the reservoir and shoreline. In the middleground, which is defined as distances from 0.5 to 4 miles, the viewshed is dominated by views of the floodplain, shorelines, and the surrounding foothills.

As discussed in Section 2.2, project facilities include Santa Felicia Dam, spillway and outlet works (intake tower and penstock); however the majority of these facilities are not viewable from USDA-FS land. Additionally, United maintains a number of recreational facilities within the Project area including the Lake Piru Marina, the Juan Fernandez Boat Launch, the Reasoner Canyon Picnic Area and Overflow Area, and the Lower Oaks and Oak Lane campgrounds. The recreation facilities are painted using nationally recognized campground colors (e.g., colors that blend well with natural landscapes such as warm browns and soft greens) to reduce visual impacts to the surrounding landscape. All project facilities are located on United Property.

4.4.2 Scenic Routes

The Land Management Plan for the Los Padres National Forest (USDA-FS 2005b) requires that special consideration be given prior to implementing projects along designated state scenic highways or National Forest scenic byways. No state or nationally designated scenic routes are currently located within or adjacent to the Project. The Lake Piru Recreation Area Master Plan (United 1999) does provide guidelines for minimizing the impact of development along Piru Canyon Road, which is designated as an eligible Ventura County Scenic Highway. In the future, if state or national scenic routes are proposed within view of the Project, then the Visual Plan may be updated as outlined in Section 4.3.3.

4.4.3 Regional Resource Management Plans

This Visual Plan was prepared using guidelines from the following resources:

- Lake Piru Recreation Area Master Plan, United Water Conservation District, August 1999 (United 1999);

- County of Ventura Conditional Use Permit LU07-0088 (ref.CUP 2949), Major Modification no. 1 – Proposed Master Plan Update for the Lake Piru Recreational Area, October 2, 2008; and,
- USDA-FS Land Management Plan (Los Padres National Forest), United States Department of Agriculture Forest Service, May 31, 2005 (USDA-FS 2005b).

4.5 IMPLEMENTATION ACTIONS

Implementation actions associated with the Visual Plan are described below.

4.5.1 Visual Enhancement/Mitigation Techniques

A number of visual enhancement/mitigation techniques may be implemented, as needed, throughout the term of the FERC license to help achieve the Visual Plan goals and minimize or mitigate potential impacts to visual resources in and adjacent to the Project area. Potential actions that are taken in the future related to visual resources may be coordinated with the USDA-FS and adhere to the visual resources protection plan process described in Section 4.5.2. Potential visual enhancement/mitigation techniques include:

- Painting - Appropriate paint color and type selection can help reduce the visual impact of Project facilities on the surrounding natural landscape. Paints should be selected for low levels of reflectivity and the use of colors existing in the natural landscape. Project recreational facilities are painted in nationally recognized campground colors (e.g., colors that blend well with natural landscapes such as warm browns and soft greens) to reduce visual impacts to the surrounding landscape.
- Vegetative screening - Where feasible, native vegetation and landscaping will be used to visually screen Project facilities from public viewpoints. Landscaping will be tailored to the individual site to maximize visual appearance. Additionally, spoils piles and vegetation will be placed in areas of existing vegetation to increase visual screening. In some cases, vegetation removal and clearing may be necessary to create defensible space and provide fire control, in which case the health and safety of the public will be given preference over visual appeal.
- Facility Location and Materials (planning) - New project facilities that are constructed during the license term will be assessed for potential impacts to visual resources and will be sited and constructed to minimize visual impacts, to the extent practicable. When possible, new facilities will conform to the natural or existing contours of the sites topography, and be sited to minimize visual exposure to the Los Padres National Forest. The use of natural-looking building materials or construction/painting techniques to mimic the surrounding landscape will minimize the visual impact of new facilities, and exposed soil areas will be stabilized with native vegetation when possible and where consistent with the Fire Plan.
- Visual Inspections - United will perform visual inspections of applicable Project facilities every 2 years and will implement mitigation procedures (e.g., touch up painting or planting of vegetation for visual screening) to maintain the visual integrity of the site.

4.5.2 Visual Resource Protection Plan Process

During the term of the FERC license, Project area modifications may alter the visual character of the Project. For modifications that may result in significant changes to the visual character of the Project, the following process will be used in conjunction with the design/planning of the modifications:

- 1) Stakeholders of planned facility modification will be notified of any potential impact to existing visual resources within the Project area;
- 2) A draft visual resource protection plan will be prepared identifying any actions that will be taken to protect, enhance, and/or mitigate for the visual resources impact by the planned modification;
- 3) Stakeholders will be given a minimum of 30-days to review and comment on the draft visual resource protection plan;
- 4) The draft visual resource protection plan will be revised and finalized to reflect stakeholder comments, if necessary;
- 5) A final visual resource protection plan will be submitted to the USDA-FS; and,
- 6) The final visual resource protection plan will be filed with FERC.

4.5.3 Implementation Schedule

The Visual Plan will be implemented as outlined in Table 2 below.

Table 2 Visual Plan Implementation Schedule	
Project Facility	Year
Develop Visual Plan and File with FERC	2009
Visual Inspections	2010, and every 2 years thereafter (e.g. 2012, 2014, 2016, etc)
Visual Plan review and revision if necessary	2019, and every 10 years thereafter (e.g. 2029, 2039, 2049)

Additionally, unless otherwise required by FERC or the USDA-FS, Project facilities will be updated to reflect new Visual Plan requirements as replacement or significant renovation of facilities is conducted.

Sign Plan

This Sign Plan has been developed to provide guidance and specifications for Project-related signs that are located within the Project boundary. The Sign Plan includes an inventory of existing signs and provides for the replacement and repair of signs in accordance with applicable regulations. This section discusses the FERC license requirements for the Sign Plan, the Sign Plan goals and guidelines, roles and responsibilities, the existing sign setting and sign guidelines, sign inspection and maintenance, and implementation actions.

5.1 FERC LICENSE REQUIREMENTS

Article 4(e), Condition No. 17(c) in Appendix A of the *Order Issuing the New License* dated September 12, 2008 requires that, within 1-year of license issuance, United prepare a Sign Plan that conforms with the manual of Uniform Traffic Control Devices, the USDA-FS sign handbook, and other applicable standards. As a minimum the Sign Plan is to include the location, design, size, color, and message of the following types of signs:

- *Information and education signs*
- *Fire Prevention signs*
- *Regulatory and warning signs*
- *Project license signs*
- *Road signs*
- *Recreation signs*
- *Directional signs to assist non-local visitors*
- *Safety signs*
- *Sign format/consistency throughout the project*

In addition, Article 4(e), Condition No. 17(c) requires that the Sign Plan address maintenance standards so that all signs are maintained in a neat and presentable condition. Signs which are to be placed on National Forest System lands shall be approved by the USDA-FS. The licensee shall not be required to consult or obtain the prior approval of the USDA-FS for signs on Licensee owned land that are not visible from National Forest System lands.

5.2 SIGN PLAN GOALS AND GUIDELINES

This Sign Plan is limited to Project facilities, lands, and waters within the FERC project boundary and is intended to be used as a guidance and reference tool for United to implement and maintain a variety of signs required by the FERC License. The guidelines and standards described in this Sign Plan do not include guidance on interior signs for United office/and or maintenance buildings, power generation facilities and dams, and other United staff workplaces. In general, project signs contained in the Sign Plan

cover public safety, warning, regulatory, resource protection, direction, and recreation signs located within the Project area and include signs on land and water.

The purpose of this Sign Plan is to inventory existing signs and establish a sign design, implementation and maintenance process to help guide the management of Project signs. This Sign Plan is intended to provide standardized guidelines for the development, implementation and maintenance of Project signs, and to meet general agency/stakeholder requirements.

The following agency design guidelines have been considered and incorporated into the project sign guidelines. Future sign additions must comply with the following guidelines:

- FERC has developed a “Safety Signage at Hydropower Projects” Handbook (FERC Sign Handbook) (FERC 2001) to compile information regarding signage and safety issues related to hydropower projects. The FERC Sign Handbook provides guidance on assessing the need for safety signage, effective sign design, format and messages, sign placement, and sign maintenance. Additionally, FERC’s Guidelines for Public Safety at Hydropower Projects (FERC 1992) provides guidelines for the design of Public Safety Plans and associated signage for hydro electric projects.
- National standards for signs and other devices used to control traffic on public highways and roads have been developed by the U.S. Department of Transportation Federal Highway Administrations (USDOT FHA) Manual of Uniform Traffic Control Devices (MUTCD) (USDOT FHA 2007). Project signs located along public highways and roads will be constructed, located, installed and maintained according to the latest design standards outlined in the MUTCD. As the MUTCD is periodically revised and updated, the most current version should be consulted at the time of development of planned signs along highways/roads during the term of the License.
- Recommendations for signs on USDA-FS lands are provided in the USDA-FS’ Sign and Poster Guidelines (USDA-FS 2007). These guidelines identify the basic signage principals for planning, designing, protecting, installing and maintaining signs and posters on USDA-FS lands and are intended to be specific to the USDA-FS signage responsibilities. Currently, no project signs are planned on USDA-FS lands, however, if signs are installed on such lands these guidelines will be considered.
- Boating-related signs and on-water markers will meet guidelines established by the California Department of Boating and Waterways (Boating and Waterways). Boating and Waterways generally follows federal guidance when establishing guidelines for signs, buoys, and markers on navigable waterways. The most current Boating and Waterways guidelines should be consulted at the time of development of planned signs in navigable waterways during the term of the License.
- The Architectural and Transportation Barriers Compliance Board (Access Board) is responsible for developing the Americans with Disabilities Act Accessibility Guidelines (ADAAG). ADAAG defines technical guidelines for the accessibility of the public in certain situations, sites, and facility function in order to comply with the federal ADA. The ADA requires that specific areas and/or facilities use the ADAAG minimum accessibility guidelines. The most current version of the ADAAG should be consulted at the time of development of planned ADA accessibility related signs during the term of the License. Currently, ADA accessibility-related signs must meet the following guidelines:

- Character Proportions – the width-to-height ration for letters should be between 3:5 and 1:1 and the stroke width-to-height ration should be between 1:5 and 1:10.
- Character Height – letter/number height is determined by the viewing distance.
- Finish and Contract – sign colors should be an eggshell, matte, or other non-glare finish. Characters and/or symbols should contrast with their background.
- Symbols of Accessibility – accessibility area and facilities should be signed with the international symbol of accessibility.

5.3 ROLES, RESPONSIBILITIES, AND COORDINATION

United is responsible for the implementation of the requirements of this Sign Plan including coordination with and compliance with other plans specified in the *Order Issuing the New License* dated September 12, 2008 as discussed below.

5.3.1 Consistency and Coordination with other FERC Required Project Management Plans

This Sign Plan will be utilized and coordinated with the development and/or updating of the following Project Management Plans to reduce impacts to the visual quality of the Project area:

- Biological Resource Management Plans;
- Vegetation and Noxious Weed Management Plan;
- Roads and Facilities Management Plan;
- Visual Management Plan;
- Fire Management and Response Plan; and,
- Public Safety Plan.

5.3.2 Periodic Review and Update

As needed, United may review and amend this Sign Plan with approval from the USDA-FS and FERC.

5.4 EXISTING SETTING AND PROJECT SIGN GUIDELINES

The existing setting and project sign guidelines are discussed below.

5.4.1 Typical Types of Project Signs

In order to properly manage the Project area, a variety of signs are available for use, including directional signs, identification signs, regulatory/rule signs, informational and educational signs, safety and warning signs, and temporary signs. Table 3 outlines the types of signs that may be found within the Project area.

Table 3 Types of Project Signs		
Type	Description	Typical Viewing Range
Direction Signs	Signs which show the location of and help direct visitors to specific Project features or recreation areas. The signs should be simple and concise.	Foot traffic Vehicles
Identification Signs	Signs which let visitors know when they have arrived at a particular recreational site (e.g. campground, boat launch, day use area, etc) or facility (e.g. powerhouse, dams, etc.).	Foot traffic Vehicles Watercraft
Regulator/Rules Signs	Signs which convey rules and regulations within the Project area. (e.g., no camping, fishing and campfire regulations, etc.).	Foot traffic
Information and Education (I&E) Signs	Signs which provide key information, interpretation, and/or educational messages to visitors such as the location of public recreation opportunities, and cultural or natural resource information.	Foot traffic
Safety and Warning Signs	Signs which help enhance visitor safety and notify visitors of potential risks (e.g. No Lifeguard on Duty, Danger High Voltage, etc.)	Foot traffic Vehicles Watercraft
Temporary Signs	Signs used to convey important messages regarding temporary changes in the Project area. Typically used in construction areas, recreation sites, and other areas that may be closed to the public for a short period of time.	Foot traffic Vehicles Watercraft

5.4.2 Project Sign Guidelines

This Sign Plan includes general project sign design guidelines to comply with the agency sign guidelines described in Section 5.2.1. These guidelines are intended to be used as a primary reference for designing new signs and replacing damaged or missing signs associated with the Project area during the license term. An inventory of existing signs within the project area is contained in Appendix E. The guidelines outlined below are intended to assist with the development and implementation of a coherent and uniform plan for the replacement and development of signs through the term of the License:

- Sign Features (e.g., size, contract, color, shape, composition, and lighting/reflection) are designed to draw the visitor's attention to the sign and message;
- Sign messages and symbols (e.g., shape, size, color, etc.) are clear and concise;
- Signs are legible;
- Signs are placed to provide adequate time for viewing and appropriate response from visitors;
- Sign structure is consistent by type; and,
- Sign maintenance is adequate to ensure that the signs' objectives are met.

5.4.2.1 Sign Shape

Project area signs, excluding road signs, should be square or rectangular in shape. The exact size and shape will largely depend on the message the sign is intended to convey. Traffic signs along roads or highways open to the public should follow the USDOT FHA, Caltrans, and Ventura County standard shapes as outlined in the MUTCD and summarized below:

- Diamond – used primarily for warning signs;
- Rectangle (with longer dimension vertical) – used primarily for regulatory signs and some warning signs;
- Pentagon (with point up) – used on for school and school crossing signs (not anticipated for use within the Project site);
- Pennant (with longer dimension horizontal) – used only for “No passing Zone” signs;
- Octagon – used only for “Stop” signs;
- Triangle (equilateral with point down) – used only for “Yield” signs, and
- Circle – used for railroad warning signs, and Homeland Security evacuation route signs.

These shapes should be limited to road signs along highways and roadways when possible.

5.4.2.2 Sign Colors

Sign color combination must provide sufficient contrast between the background and text to make the sign easily readable. For project signs, high contrasting color combinations include but are not limited to brown background with white text, white background with black or red text, and yellow background with black text. Sign logos (United, USDA-FS), and management-plan-specific signs may deviate from the suggested color pallets, if necessary.

The USDOT FHA has adopted standardized sign colors to convey specific traffic control message. These colors include red (stop), black (regulation), white (regulation), orange (construction), yellow (general warnings, yields), brown (recreational and cultural interests), green (movement permitted), and blue (motorist services). The use of these colors should be limited to project traffic control signs to avoid confusing motorist and visitors.

Signs that are intended to be viewed at night will be reflective. While no project signs are currently planned for use on USDA-FS lands, if signs are installed, they will use typical USDA-FS colors such as reflective brown background with reflectorized white text and symbols.

5.4.2.3 Sign Text and Font

Sign text will use an easy to read font, and text will generally follow normal upper and lowercase rules. All uppercase letters may be used when added emphasis may is needed. Text size will be based on whether the primary viewing range is from foot traffic, a vehicle, and/or watercraft. Table 4, below, outlines general guidelines for letter height on Project area signs that will be viewed by pedestrians or watercraft.

Table 4 Letter Height Guidelines for Project Signs				
Viewing Distance (feet)	Letter Height (inches)	Viewer		
		Foot Traffic	Vehicle	Watercraft
0-20	0.75	X		
21-27	1	X		
28-41	1.5	X		

Table 4 Letter Height Guidelines for Project Signs				
Viewing Distance (feet)	Letter Height (inches)	Viewer		
		Foot Traffic	Vehicle	Watercraft
42-55	2	X		
56-83	3	X	X	
84-111	4	X	X	
112-167	6		X	X
168-251	9		X	X
252-335	12		X	X
336-503	18			X
504-671	24			X
672-839	30			X
840-1,007	36			X
1,008-1,175	42			X
1,176-1,343	48			X
1,344-1,512	54			X
For distances greater than 1,512 feet, the Letter Height is calculated by dividing the viewing distance by 28 and rounding up the nearest inch. (USACE 1995)				

Additionally, the USDOT FHA developed calculations for determining letter height based on speed, viewing distance, recognition time, and the number of lanes. These guidelines are provided in Table 5 below:

Table 5 Letter Height Guidelines for Highway/Roadway Signs in the Project Area	
Speed (miles per hour)	Letter Height (inches)
0-25	4
26-35	6
36-50	9
51-65	12

While all project roads are private, the USDOT FHA guidelines will be followed whenever possible in order to maintain consistency. Font size may be adjusted to meet special conditions, as required by sign needs in each resource-specific management plan.

5.4.2.4 Sign Messages

Sign messages will vary depending on the type of signage. Messages should be tailored to clearly convey the intended message in a short and concise manner. The following guidelines will be considered when designing sign messages:

- Messages should be tailored to the audience and the information that the audience needs.
- Each message should be limited to one concept, thought, or subject.
- If multiple messages are conveyed on a single sign, the most important message should appear first.
- Messages should be as short and concise as possible. Ideally, messages should be three to six words in length; however, when longer messages are necessary the message should be split into a short header, and longer byline messages.
- All messages within the Project site should strive to use similar wording, terms and location names for increased consistency.
- Specific messages should be presented using positive wording, except in cases where the message may be diluted (e.g., “No Swimming”, etc.)
- Commonly accepted international symbols should be used to help convey specific messages, where applicable.

5.4.2.5 Sign Materials

A variety of materials may be used for Project signs, and given the length of the License new technologies may become available during the license period. As a general rule, softer sign materials are more porous and allow for better penetration of paints or dyes; however, they tend to be less durable and more easily vandalized. Common sign materials include plywood, plastic (e.g., acrylic, polycarbonate, polyethylene, etc.), aluminum, synthetic textiles, fiberglass, cardboard, steel, and high density foam board.

Sign location, cost, and type should all be considered during the selection of sign materials within the project site, and sign materials may vary throughout the site based on these factors.

5.5 SIGN INSPECTION AND MAINTENANCE

Proper sign maintenance and appearance insures that Project signs continue to convey the intended message. Additionally, the appearance of Project signage impacts the overall visual appeal of the Project area, and visitors overall impression of United. Proper maintenance helps ensure that Project signs remain functional, clean, legible and in the appropriate locations to help insure the visitors’ safety and enjoyment of the Project area. Project signs will be inspected on an annual basis to determine overall condition and effectiveness, and maintained, as necessary, per the following maintenance standards:

- Damaged signs and sign structures will be repaired or replaced in a timely manner;
- Grass, brush, and/or other vegetation that may obscure signs will be routinely removed to restore the full visibility of each sign;
- Signs that are faded and/or illegible will be repaired, restored or replaced to their original condition, as necessary, to continue to convey the message intended; and,
- Sign maintenance should be incorporated in to United’s routine maintenance procedures.

A Sign Inventory (Appendix E) has been developed to assist in the inspection of existing project signs. The Project sign inventory identifies the types, messages, characteristics, and condition at the time of the inventory of Project-related signs. Photographs of signs located within Project facilities and photographs of typical signs located in Project recreation areas are included in the inventory. Sign locations are

indicated in Appendix E. If additional signage is required, the inventory should be updated to reflect these changes.

5.6 Sign Plan Implementation

Following approval of the Sign Plan by FERC, United has the authority to develop, implement, and maintain signs within the Project without further agency approval. Approval must be granted by the USDA-FS prior to the placement of permanent signs on USDA-FS lands. For proposed new signs within the Project area that are visible from USDA-FS lands, United will coordinate with the USDA-FS to address comments and concerns. Significant changes in the development, implementation, and maintenance of project signs should be discussed during the annual consultation meeting discussed in Section 7.0.

Roads and Facilities Maintenance Plan

This Roads and Facilities Management Plan (Road Plan) has been developed to provide guidance and outline responsibilities related to the rehabilitation and maintenance of Project roads associated with the Santa Felicia Project. Specifically, the Road Plan addresses roads that are 1) located within the FERC Project boundary, 2) used by United for the operations and maintenance of the Project, and, 3) closed to unauthorized motor vehicle use. United does not operate any Project facilities on USDA-FS lands and does not conduct any Project-related operations and maintenance that requires access on roads located in USDA-FS lands. Accordingly, no roads located on USDA-FS lands have been designated Project roads. This section discusses the FERC license requirements for the Road Plan, the Road Plan goals, the Project roads covered by the plan, roles and responsibilities, road rehabilitation and relocation, operation and maintenance of Project roads, and operational plans.

6.1 FERC LICENSE REQUIREMENTS

Article 4(e), Condition No. 20 in Appendix A of the *Order Issuing the New License* dated September 12, 2008 requires that, within 1-year of license issuance, United prepare a Road Plan that conforms with USDA-FS standards (i.e., USDA-FS manuals and handbooks) for design, construction, operation, and maintenance. At a minimum, the Road Plan must address the following:

(1) Road Planning:

- (a) A map(s) compatible with the FS Travel Routes database identifying both project and non-project roads affecting NFS resources, culverts, bridges, drainages, watering sources, disposal sites for organic materials, and disposal sites for surplus rock and soil from road maintenance within and adjacent to the project boundary including designation of use, season of operation, and public use.*
- (b) Identification of the uses (i.e. recreation, facility access) of the roads, and season of operation.*
- (c) An inventory of road and road facilities conditions including any construction or maintenance needs.*
- (d) Description of the types of materials allowed to be disposed of in spoil piles.*
- (e) Description of how organic materials will be treated.*
- (f) Soil protection and erosion control measures including revegetation of disturbed sites and spoil piles to avoid noxious weed infestation and erosion (using only certified weed-free straw).*
- (g) A Water Quality Monitoring Plan that includes runoff management.*
- (h) A Traffic Safety plan.*

- (i) *An adaptive management component to allow changes should use or standards necessitate.*

(2) *Project Road Rehabilitation:*

- (a) *Include limited operating periods (LOPs) for identified Forest Service special status wildlife species when planning rehabilitation projects as well as provisions to prevent the infestation and spread of noxious weeds (reference items in Condition No. 18).*
- (b) *Develop a road rehabilitation implementation schedule to bring existing roads and associated facilities (i.e. culverts, gates, bridges, crossings, crib walls, etc.) into compliance with Forest Service standards that achieve the Forest Service's Road Management Objectives (RMOs). The schedule shall bring existing roads into compliance over the term of the license. Health and safety items shall be completed within the first year of implementation. Road surfacing items shall be completed within five years of implementation. All lower priority projects shall be completed as soon as practicable after license issuance.*
- (c) *The following items should be considered during road rehabilitation:*
- *Crossings are constructed and maintained to prevent diversion of streamflow out of the channel and down the road in the event of crossing failure.*
 - *Prevent chronic erosion to stream channels by installing proper drainage such as French drains, outsloping, rolling dips, water bars, etc.*
 - *Fish passage and proper stream function is provided for at all stream crossings that are identified as fish habitat areas.*
 - *All intermittent and perennial stream crossings shall accommodate a 100-year storm event and associated bedload and debris. Provide hydrologic information to verify calculations if requested by Forest Service.*
 - *All bridges when replaced or reconstructed shall conform to American Association of State Highway and Transportation Officials (AASHTO) Standard specifications for Highway Bridges (latest edition) including guardrails. All bridge approaches must be appropriately surfaced.*
 - *Gates on NFS lands shall comply with FS standards for construction and signing.*
 - *Rotting log parking barriers are replaced with standard parking barrier devices, e.g. guardrails, concrete stops, etc.*
 - *Remove all project related road spoil piles not currently located in approved areas on NFS lands to a location either off the Forest, or to a Forest Service approved disposal site. Removal area shall be revegetated with approved native (locally collected) seed to reduce invasion of noxious weeds. Monitor and eradicate noxious weeds as specified in the "Noxious Weeds Management Plan" (License Condition No. 18).*
 - *Project roads when reconstructed meet Forest Service road standards consistent with "Road Management Objectives", including shoulders, installing additional turnouts (with material matching that of the main roadbed), reconstructing sharp curves to meet standards for clearance and sight distance, and stabilizing cutbanks/fillslopes with crib walls and other*

retaining structures to prevent road failure and excessive sedimentation to waterways.

(3) Road Operation & Maintenance (O&M):

- (a) Develop an annual road operation and maintenance schedule for on-going needs to maintain Project roads on USDA-FS lands to comply with Forest Service standards and RMOs.*
- (b) Complete normal maintenance activities on an annual basis including: repair and replacement of damaged culverts identified in road logs, removal of existing vegetation to allow adequate sight distances, etc.*
- (c) Include any required LOPs for wildlife species and noxious weed prevention provisions in planning and performing maintenance activities.*

6.2 ROAD PLAN GOALS

This Road Plan is intended to describe the roads used by United to access the Santa Felicia Project facilities. The Road Plan addresses issues related to access, maintenance activities, rehabilitation, road use, and traffic control measures. This Road Plan specifically addresses roads that are: 1) located within the FERC Project boundary; 2) used by United for the operations and maintenance of the Project; and, 3) closed to unauthorized motor vehicle use.

6.3 PROJECT ROADS COVERED BY THIS PLAN

Roads in the vicinity of the Project were evaluated for type and level of use by United for operations and maintenance of the Project. Figure 1 identifies Project roads and non-Project access roads used by United in the operations and maintenance of Project facilities. Roads designated Project roads include portions of the following roads located within the FERC boundary in the vicinity of Santa Felicia Dam:

- Santa Felicia Canyon Fire Road;
- Hydroplant access road; and,
- Piru Creek access road.

These roads are used year round, primarily by United personnel, and are gated at or near the Project boundary. The condition of each of the Project roads is currently fair and no rehabilitation projects are planned for the near future.

United does not operate any Project facilities on USDA-FS lands and does not conduct any Project-related operations and maintenance that requires access on roads located in USDA-FS lands. Accordingly, no roads located on USDA-FS lands have been designated Project roads. Concurrence that roads located within USDA-FS lands would not be considered Project roads was obtained from the USDA-FS on July 6, 2009 (pers. comm. with USDA-FS staff Irvin Fernandez on July 6, 2009). United's use of roads located on USDA-FS lands has been addressed through a separate USDA-FS road maintenance agreement (*Forest Development Road Cooperative Agreement*, October 14, 1981).

Santa Felicia Canyon Road and Piru Canyon Road, which are used to access the developed Project recreation facilities, are designated as non-Project access roads since they are located outside of the Project boundary.

6.4 ROLES, RESPONSIBILITIES, AND COORDINATION

United is responsible for the implementation of the requirements of this Road Plan including coordination with and compliance with other plans specified in the *Order Issuing the New License* dated September 12, 2008 as discussed below.

6.4.1 Consistency and Coordination with other FERC Required Project Management Plans

This Road Plan will be utilized and coordinated with the development and/or updating of the following Project Management Plans to reduce impacts to the visual quality of the Project area:

- Biological Resource Management Plans;
- Vegetation and Noxious Weed Management Plan;
- Spoil Management, Erosion, and Sediment Control Plan;
- Visual Management Plan;
- Fire Management and Response Plan; and,
- Public Safety Plan.

6.4.2 Periodic Review and Update

As needed, United may review and amend this Road Plan with approval from the USDA-FS and FERC.

6.5 ROAD REHABILITATION/RELOCATION

If warranted, United will take appropriate measures to rehabilitate unsafe conditions or address other concerns that may affect the integrity of the Project roads. Gates or other access control measures may be installed, where necessary, to achieve resource protection or facility security.

If reconstruction or relocation of the Project roads is necessary, then the road design would conform to the standards and specifications required by the Ventura County Public Works Agency. United would obtain FERC approval prior to reconstructing or relocating any Project roads.

6.6 ROAD MAINTENANCE AND MEASURES TO MINIMIZE OR ELIMINATE POTENTIAL IMPACTS FROM ROAD MAINTENANCE ACTIVITIES

United is responsible for maintaining the Project roads. Routine road maintenance activities are conducted on an as-needed basis and include grading or re-graveling of unpaved dirt and gravel surfaces to ensure surface drainage is functioning properly, paving or patching of existing paved roads, cleaning of culverts and ditches, and vegetation trimming and clearing along roads. The Project roads will be periodically inspected to ensure that maintenance activities are being performed with adequate frequency. Access gates will be inspected annually, at a minimum, and will be maintained in good operating condition. Specific measures that will be implemented as part of the road maintenance activities are discussed below.

6.6.1 Erosion Control

The following measures will be implemented, where applicable:

- *Grading and Contouring*

Grading will conform to natural contours, where feasible. To the extent possible, efforts will be made to retain the original drainage patterns and not create patterns that will accelerate erosion. United will not sidecast materials.

- *Erosion Control Structures/Stormwater Runoff Control*

In areas prone to significant flows and/or erosion, structures such as riprap, water bars, culverts, or small concrete retaining structures may be necessary. Where required, sedimentation basins (and/or sediment fences) may be used to control sediments where work is conducted in or adjacent to streams.

- *Slope Stabilization*

Certified weed-free straw, hydraulically applied soil stabilizer, and/or erosion control blanketing (non-monofilament or biosafe type only) will be used for slope stabilization where applicable. The erosion control blanketing would be used as a temporary stabilization measure prior to revegetation and/or applied to seeded slopes to stabilize the slope during vegetation establishment.

- *Revegetation*

Where applicable, revegetation may be used to control erosion and sedimentation on a long-term basis. Revegetation methods and plant palettes are site-specific and would require preparation of a revegetation plan to identify types of plants to be used and the appropriate method and time of planting/seeding. The revegetation plan would be prepared in accordance with the Project Vegetation and Noxious Weed Management Plan

- *Wind Erosion*

Long-term wind erosion can be reduced through revegetation or the intermittent use of dust-palliatives if revegetation is not an option. Lath fences or earthen berms may be used to reduce wind velocities in areas prone to wind erosion.

6.6.2 Vegetation and Noxious Weed Management

Vegetation management and invasive/noxious weed control associated with road maintenance activities will comply with the Vegetation and Noxious Weed Management Plan that is required by Article 4(e), Condition No. 18(b) in Appendix A of the *Order Issuing the New License* dated September 12, 2008. The plan will include provisions for the evaluation of and implementation of maintenance activities related to vegetation, potential impacts, and mitigation measures, where necessary.

6.6.3 Biological Resource Protection

Prior to performing any maintenance or rehabilitation of Project roads, United personnel will determine whether the activity conflicts with limited operating periods (LOPs) established by the USDA-FS or other restrictions identified in the Arroyo Toad Protection Plan and/or Biological Resources Management Plans prepared in compliance with Article 4(e), Conditions No. 16 and 18, respectively, in Appendix A of the *Order Issuing the New License* dated September 12, 2008. In addition, United will ensure that the road maintenance or rehabilitation activities comply with applicable LOPs, the Arroyo Toad Protection Plan, and the Biological Resources Management Plans.

6.7 OPERATIONAL PLANS

This section outlines the proposed operational plans that apply to Project roads.

6.7.1 Traffic Safety Plan

United will install and maintain traffic controls and road features (e.g., turnouts) to provide adequate warning and protection from hazardous or potentially hazardous conditions associated with the use of Project roads for operations and maintenance of the Project.

United will maintain signage on and adjacent to the Project roads (including signs posted on gates). The signs include access-restricting signs, directional signs, signs warning of hazards, and signs restricting parking. The signs will be inventoried and inspected at least annually to review for compliance with the Manual on Uniform Traffic Control Devices guidelines, and will be repaired and/or replaced, as necessary.

6.7.2 Water Quality Monitoring Plan

In order to minimize impacts to water quality, United will follow the California Department of Transportation (Caltrans) Best Management Practices (Caltrans 2003 or subsequent version) for all roadway operations and maintenance activities, as well as any future rehabilitation projects related to roadways. In addition, United will, at a minimum, conduct annual inspections of all culverts and roadside ditches to evaluate the performance of the Best Management Practices (BMPs). The inspection will include the identification of areas of notable soil erosion or sediment accumulation for the consideration of further BMP implementation.

Annual Consultation

United personnel will annually consult with USDA-FS personnel in accordance with FERC requirements. The annual consultation will occur between January 10 and March 15 of each year and will include:

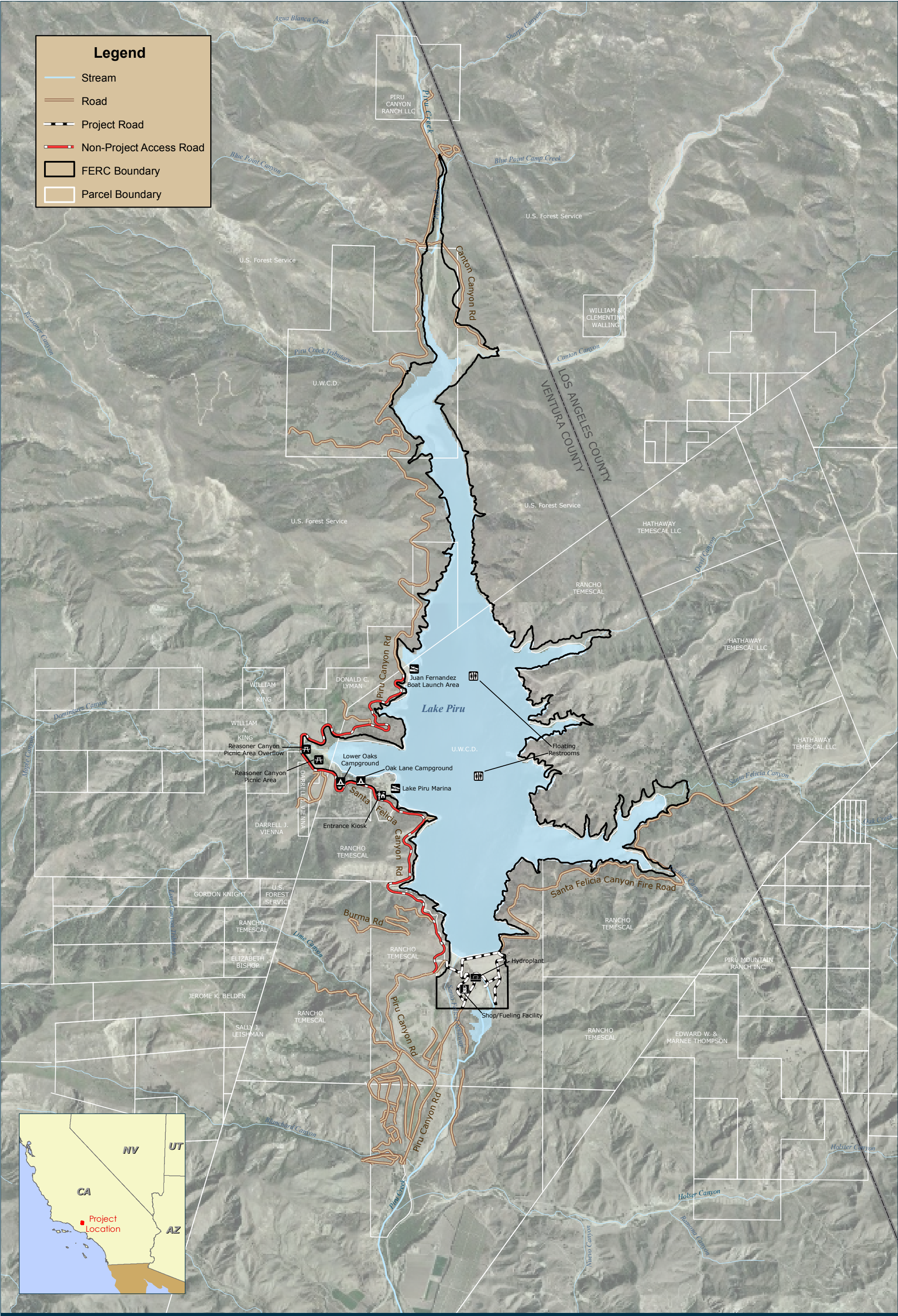
- A status report regarding implementation of License conditions;
- Results of any monitoring studies performed over the previous year in formats agreed to by the USDA-FS and the Licensee;
- Review of any non-routine maintenance;
- Discussion of any foreseeable changes to Project facilities or features;
- Discussion of any necessary revisions or modifications to approved plans;
- Discussion of the needed protection measures for species newly listed as threatened, endangered, or sensitive or, changes to existing management plans that may no longer be warranted due to delisting of species or, to incorporate new knowledge about a species requiring protection; and,
- Discussion of elements of current year maintenance plans (e.g. road maintenance).

United will maintain a record of the consultation including any recommendations from the USDA-FS for the protection of resources on USDA-FS lands. United will file the consultation record with FERC no later than 60 days following the consultation.

References

- Access Board. 2002. Americans with Disabilities Act Accessibility Guidelines for Buildings and Facilities, U.S. Architectural and Transportation Barriers Compliance Board (Access Board). Washington, D.C.
- Access Board. 2004. Americans with Disabilities Act and Architectural Barriers Act Accessibility Guidelines, U.S. Architectural and Transportation Barriers Compliance Board (Access Board). Washington, D.C.
- Caltrans. 2003. Storm Water Quality Handbooks: Construction Site Best Management Practices (BMPs) Manual. State of California Department of Transportation. Washington D.C., March 2003.
- BLM. 2006. Sign Guidelines for Planning, Designing, Fabricating, Procuring, Installing, and Maintaining Signs for Outdoor Public Use Areas, U.S. Department of the Interior Bureau of Reclamation, Washington D.C., October 2006.
- FERC. 1992. Federal Energy Regulatory Commission (FERC) Guidelines for Public Safety at Hydropower Projects, Division of Dam Safety and Inspections Office of Energy Projects Federal Energy Regulatory Commission, Washington D.C., March 1992
- FERC. 2001. Federal Energy Regulatory Commission (FERC) Safety Signage at Hydropower Projects, Division of Dam Safety and Inspections Office of Energy Projects Federal Energy Regulatory Commission, Washington D.C., October 2001.
- USACE. 2006. Corps of Engineers Sign Standards Manual (Engineer Pamphlets EP310-1-6a and EP310-1-6b, United States Army Corps of Engineers, Washington D.C.
- USDA-FS. 2000. Pacific Southwest Region, Water Quality Management for National Forest System Lands in California – Best Management Practices, United States Department of Agriculture Forest Service, Washington D.C., September 2000
- USDA-FS. 2005a. Los Padres National Forest Fire Management Plan, United States Department of Agriculture Forest Service, Washington D.C, May 21, 2005
- USDA-FS. 2005b. Land Management Plan (Los Padres National Forest), United States Department of Agriculture Forest Service, Washington DC, September 2005
- USDA-FS. 2007. Sign and Poster Guidelines for the Forest Service, EM-7100-15, United States Department of Agriculture Forest Service, Washington D.C., December 2007
- USDOT FHA. 2007. Manual of Uniform Traffic Control Devices (MUTCD) for Streets and Highways, 2003 Edition (revised December 2007), U.S. Department of Transportation, Washington D.C.
- United. 1999. Lake Piru Recreation Area Master Plan, United Water Conservation District, August 1999.

Figures



LAND RESOURCE MANAGEMENT PLAN
FOR THE SANTA FELICIA PROJECT

Figure 1 – Project Facilities and FERC Boundary

Applicable Fire-Related Excerpts from
the State of California Public Resources
Code

Applicable Fire-Related Excerpts from State of California Public Resources Code

4427. During any time of the year when burning permits are required in an area pursuant to this article, no person shall use or operate any motor, engine, boiler, stationary equipment, welding equipment, cutting torches, tarpots, or grinding devices from which a spark, fire, or flame may originate, which is located on or near any forest-covered land, brush-covered land, or grass-covered land, without doing both of the following:

- (a) First clearing away all flammable material, including snags, from the area around such operation for a distance of 10 feet.
- (b) Maintain one serviceable round point shovel with an overall length of not less than forty-six (46) inches and one backpack pump water-type fire extinguisher fully equipped and ready for use at the immediate area during the operation.

This section does not apply to portable powersaws and other portable tools powered by a gasoline-fueled internal combustion engine.

4428. No person, except any member of an emergency crew or except the driver or owner of any service vehicle owned or operated by or for, or operated under contract with, a publicly or privately owned utility, which is used in the construction, operation, removal, or repair of the property or facilities of such utility when engaged in emergency operations, shall use or operate any vehicle, machine, tool or equipment powered by an internal combustion engine operated on hydrocarbon fuels, in any industrial operation located on or near any forest, brush, or grass-covered land between April 1 and December 1 of any year, or at any other time when ground litter and vegetation will sustain combustion permitting the spread of fire, without providing and maintaining, for firefighting purposes only, suitable and serviceable tools in the amounts, manner and location prescribed in this section.

- (a) On any such operation a sealed box of tools shall be located, within the operating area, at a point accessible in the event of fire. This fire toolbox shall contain: one backpack pump-type fire extinguisher filled with water, two axes, two McLeod fire tools, and a sufficient number of shovels so that each employee at the operation can be equipped to fight fire.
- (b) One or more serviceable chainsaws of three and one-half or more horsepower with a cutting bar 20 inches in length or longer shall be immediately available within the operating area, or, in the alternative, a full set of timber-felling tools shall be located in the fire toolbox, including one crosscut falling saw six feet in length, one double-bit ax with a 36-inch handle, one sledge hammer or maul with a head weight of six, or more, pounds and handle length of 32 inches, or more, and not less than two falling wedges.
- (c) Each rail speeder and passenger vehicle, used on such operation shall be equipped with one shovel and one ax, and any other vehicle used on the operation shall be equipped with one shovel. Each tractor used in such operation shall be equipped with one shovel.
- (d) As used in this section:
 - (1) "Vehicle" means a device by which any person or property may be propelled, moved, or drawn over any land surface, excepting a device moved by human power or used exclusively upon stationary rails or tracks.
 - (2) "Passenger vehicle" means a vehicle which is self-propelled and which is designed for carrying not more than 10 persons including the driver, and which is used or maintained for the transportation of persons, but does not include any motortruck or truck tractor.

4431. During any time of the year when burning permits are required in an area pursuant to this article, no person shall use or operate or cause to be operated in the area any portable saw, auger, drill, tamper, or other portable tool powered by a gasoline-fueled internal combustion engine on or near any forest-covered land, brush-covered land, or grass-covered land, within 25 feet of any flammable material, without providing and maintaining at the immediate locations of use or operation of the saw or tool, for firefighting purposes one serviceable round point shovel, with an overall length of not less than 46 inches, or one serviceable fire extinguisher. The Director of Forestry and Fire Protection shall by administrative regulation specify the type and size of fire extinguisher necessary to provide at least minimum assurance of controlling fire caused by use of portable power tools under various climatic and fuel conditions. The required fire tools shall at no time be farther from the point of operation of the power saw or tool than 25 feet with unrestricted access for the operator from the point of operation.

- 4442.** (a) Except as otherwise provided in this section, no person shall use, operate, or allow to be used or operated, any internal combustion engine which uses hydrocarbon fuels on any forest-covered land, brush-covered land, or grass-covered land unless the engine is equipped with a spark arrester, as defined in subdivision (c), maintained in effective working order or the engine is constructed, equipped, and maintained for the prevention of fire pursuant to Section 4443.
- (b) Spark arresters affixed to the exhaust system of engines or vehicles subject to this section shall not be placed or mounted in such a manner as to allow flames or heat from the exhaust system to ignite any flammable material.
- (c) A spark arrester is a device constructed of nonflammable materials specifically for the purpose of removing and retaining carbon and other flammable particles over 0.0232 of an inch in size from the exhaust flow of an internal combustion engine that uses hydrocarbon fuels or which is qualified and rated by the United States Forest Service.
- (d) Engines used to provide motive power for trucks, truck tractors, buses, and passenger vehicles, except motorcycles, are not subject to this section if the exhaust system is equipped with a muffler as defined in the Vehicle Code.
- (e) Turbocharged engines are not subject to this section if all exhausted gases pass through the rotating turbine wheel, there is no exhaust bypass to the atmosphere, and the turbocharger is in effective mechanical condition.
- (f) Motor vehicles when being operated in an organized racing or competitive event upon a closed course are not subject to this section if the event is conducted under the auspices of a recognized sanctioning body and by permit issued by the fire protection authority having jurisdiction.

4443. No person shall use, operate, or cause to be operated on any forest-covered land, brush-covered land, or grass-covered land any handheld portable, multiposition, internal-combustion engine manufactured after June 30, 1978, which is operated on hydrocarbon fuels, unless it is constructed and equipped and maintained for the prevention of fire.

The board shall, by regulation, specify standards for construction, equipment, and maintenance of such engines for the prevention of fire and shall specify a uniform method of testing to be used by engine and equipment manufacturers, governmental agencies, and equipment users. The regulations shall include specification of exhaust system standards for carbon particle retention or destruction, exposed surface temperature, gas temperature, flammable debris accumulation, durability, and serviceability.

Portable power saw and other portable equipment described in this section which were manufactured prior to July 1, 1978, shall be subject to fire safety design specifications as prescribed by the board.

Fire Suppression Action Plan

United Water Conservation District
Fire Suppression Action Plan
(updated July 15, 2009)

IN CASE OF FIRE...

United personnel (or its contractors) must attempt to contain the fire with on-site personnel, equipment, and fire suppression tools.

Generally, the most fire knowledgeable person on-site shall assume responsibility for the initial attack on the fire. This person shall direct fire suppression activities until the fire is controlled or a qualified emergency responder relieves him/her or the conditions become unsafe.

If the initial attack fails and the fire becomes an escaped wildfire, project personnel and contractors shall only attempt fire suppression based upon their knowledge, training, and ability to do so.

To the extent feasible and know, the point of origin of the fire should be protected, and all physical evidence must be preserved.

AND SIMULTANEOUSLY...

Contact the Ventura County Fire Department by the most expeditious means available.

Telephone: 911

And if the fire is on Forest Service land, call 911 and follow-up with a call to: Los Padres National Forest Emergency Communication Center.

Telephone: (805) 961-5727

When reporting a fire, United personnel should provide the following information:

1. Reporting party's name
2. Office or cell phone call-back number
3. Fire location
 - Legal GPS location description (latitude & longitude or Township, Range, Section); and,
 - Descriptive location (road or geographic reference point).
4. Fire size (in acres)
5. Estimated rate of fire growth or spread
6. Description of actions being taken
7. On-scene wind conditions

FOLLOW-UP ACTIONS...

If a fire located on NFSL is suppressed by United personnel, it must be reported to the Los Padres National Forest Emergency Communication Center at (805) 961-5727 within 24 hours.

Interviews of witnesses conducted by the jurisdictional agency are essential to the wildland fire investigation. During the witness interview process, United reserves the right to have representative legal counsel present during any and all witness interviews or development of witness statements taken from United personnel and/or its agents.

United must produce, upon formal request of the jurisdictional agency, all materials and witnesses, not subject to attorney-client or attorney work product privileges, over which United has control. Material evidence related to the fire and its investigation generally includes:

- All investigation reports;
- All witness statements;
- All photographs;
- All drawings;
- All analysis of cause and origin; and,
- All other, similar materials and documents regardless of how collected or maintained.

ADDITIONAL EMERGENCY CONTACT NUMBERS...

Ventura County Fire Department

(805) 389-9710

In the event that the public or personnel need to be evacuated from the vicinity of Lake Piru due to fire, flood, or other events, the persons on this list can be contacted on a 24-hrs basis to assist in the process.

Note* Tony Ward & Kelly Breslin Live at the lake area code is 805 unless listed otherwise.

Tony Blankenship- Operations Manager, United Water

Office: (805) 485-5114 Ext.11

Home: (805) 482-3885

Cell 24 hrs: (805) 340-0170

Clayton Strahan - Lake Piru Supervising Park Ranger, United Water

Office: (805) 521-1645

Cell 24 hrs: (805) 765-5875

Ranger office: (805) 521-0105

Tony Ward - Dam Operator, Lake Piru, United Water

Office: (805) 521-1149

Cell: (805) 443- 0038

Satellite Phone: 1-254-204-6411 (on if cell or landline down)

Home: (805) 521-0943

Pager: (805) 639-7773 (24 hrs)

John Dickenson - Engineering Manager ,United Water

Office: (805) 525-4431

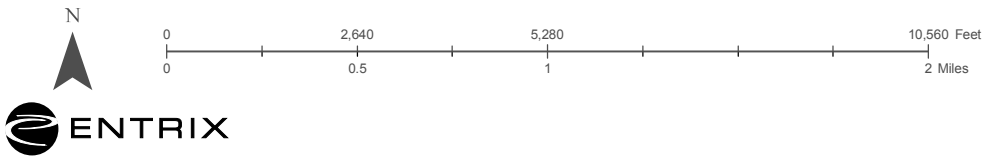
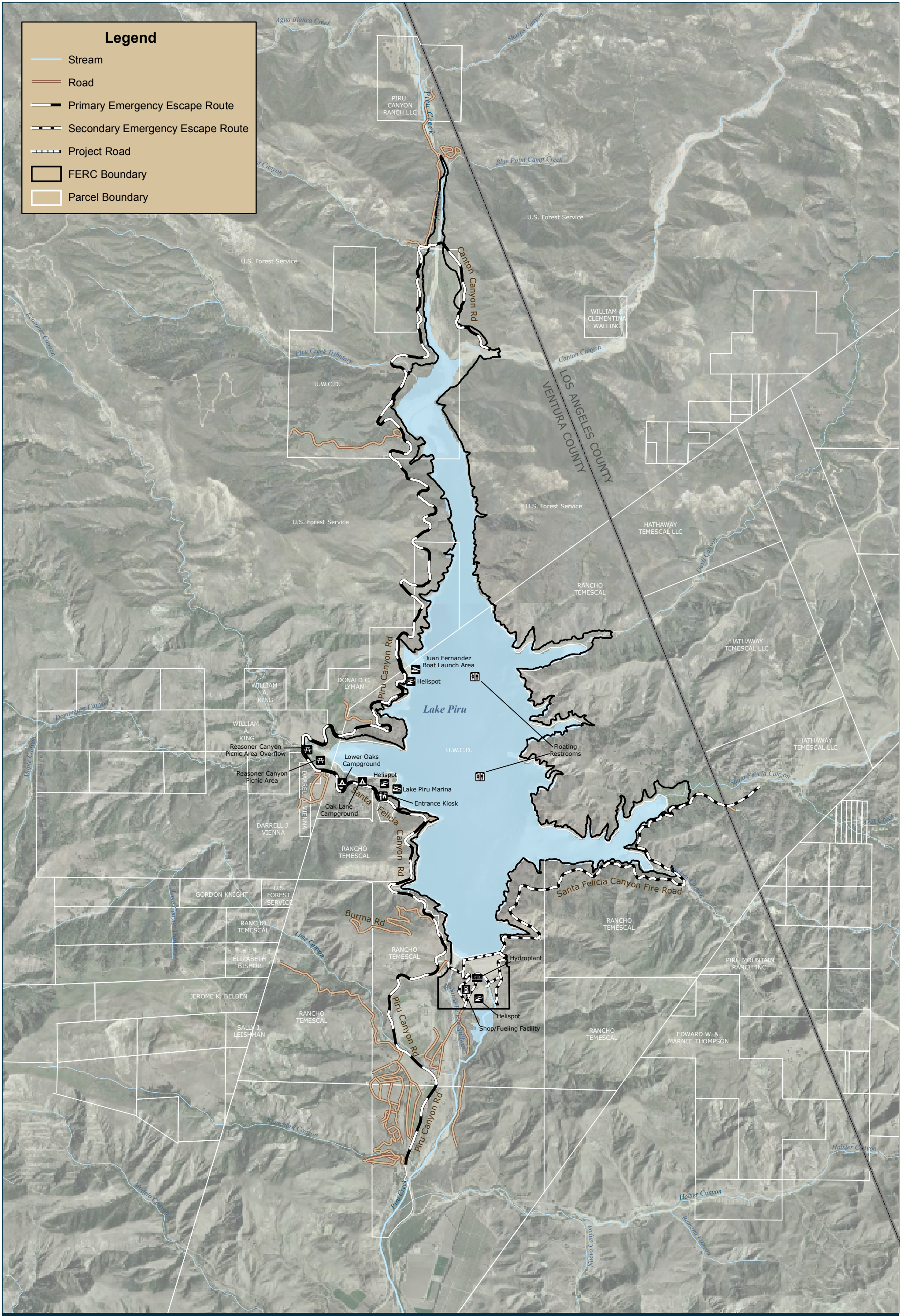
Cell: (805) 340-2830

Kelly Breslin - Lake Piru Manager, RRM

Office: (805) 521-1500 Ext. 206

Home: (805) 521-1127

Cell: (805) 990 1859



LAND RESOURCE MANAGEMENT PLAN
FOR THE SANTA FELICIA PROJECT

Figure B-1 - Fire Suppression Action Plan

Fire-Related Signage at Lake Piru Campground Facilities

Project Visitor Campfire Safety Poster Example

Campfires: Visitors must observe all posted fire restrictions. Campfires are permitted subject to the following conditions:

1. Visitors must confine all fires to a designated grill, fire ring, or other such facility as provided.
2. Campfires must be controlled and attended at all times and completely extinguished before a site is vacated.
3. Fires are not permitted during periods of high winds, or during other conditions determined to be unsafe by authorized staff or the local fire district.
4. Fires must be kept to a reasonable and safe size.
5. The use of personal outdoor grills for fires shall not be permitted, with the exception of portable gas grills.

Fireworks and Firearms: No person shall discharge fireworks or any other explosive device within a recreation area without a special use permit.

USDA-FS Los Padres National Forest Project Activity Levels

Project Activity Levels (PALs)

(excerpted from *Los Padres National Forest Fire Management Plan, 2005*)

Table D-1 on the following page establishes work restrictions and fire precautions that the Contractor must observe at each activity level. The restrictions are cumulative at each level.

Contractor shall conform to the limitations or requirements of Project Activity Level (PAL) obtained from Forest Service before starting work each day. If practicable, Forest Service will determine the following day's activity level by 4:00 PM each afternoon. The Contractor can obtain the PAL for the following day by calling, after 4:00 PM, the following phone number: **(805) 961-5727**. Activity level may change at any time if, in the judgment of the Forest Service, fire danger is higher or lower than predicted and such change is consistent with forest management objectives. The decision to change the activity level, and when, and how to take weather observations for that purpose, are within the discretion of Forest Service.

Table D-1. Project Activity Levels
(contractor & Forest Service may agree to a variance for operations at levels B, C, D & Ev)

Level	Project Activity Requirements	Additional Project Activity Requirements Using Hotsaw Technology (generally rotary heads operating at >1100 rpm)
A	Minimum required by Section 3 (see below)	Same as Project Activity Requirements.
B	1. Furnish fire patrolperson. A fire patrolperson is required for mechanical operations from cessation of operations until 2 hours after operations cease or sunset, which ever occurs first. 2. Tank truck or trailer shall be on or adjacent to landing (Section 3).	Same as Project Activity Requirements.
C	1. Fire patrolperson is required until sunset local time. 2. The following operations are prohibited from 1:00 PM until 8:00 PM local time: a. Blasting	Operations are prohibited between 1:00 PM and sunset local time. Operations may continue if they meet the following requirements: 1. A fire patrolperson is required for each piece of equipment until sunset local time. 2. Provide periodic (once per hour) inspection of areas treated that day. 3. Provide on-board self extinguishing fire suppression system on each piece of equipment capable of extinguishing any equipment related fire or provide a portable Class A fire suppression system capable of extinguishing a 20 foot by 20 foot wildland fire within five minutes of discovery. 1/
D	All following activities may operate: 1. Rubber tired skidding 2. Chipping on roads or landings 3. Cable yarding 4. Loading of logs decked at landings 5. Welding or cutting of metal only by special permit 6. Road maintenance 7. Culvert installation 8. Dirt moving 9. Helicopter Yarding 10. Hand slash disposal 11. Chainsaw operations on landings and roadbeds All other operations may continue after 1:00 PM local time, if they meet the following requirements: A fire patrolperson is required to walk all areas treated that day once per hour, until sunset local time. This includes chainsaw felling, metal track skidding, machines with chainsaw cutting heads and mastication equipment.	Same requirements as listed in PAC C.
Ev	All following activities may operate: 1. Hauling and loading of logs decked at landings 2. Equipment at approved sites may be serviced 3. Roads: Dust abatement or rock aggregate installation (does not include pit development) 4 Chainsaw operation associated with loading All other operations may continue until 1:00 PM local time when Contractor and Forest Service agree to variance	Operations are prohibited, except variances are permitted for operations until 1:00 PM local time when Contractor and Forest Service agree to additional precautions. Minimum requirements: At this level, the following types of equipment shall be immediately available within one quarter mile of the activity to quickly reach and effectively attack a fire start: tractors, skidders or other equipment with a blade capable of constructing fireline, plus PAL level D requirements.
E	The following activities may operate: 1. Hauling and loading of logs decked at landings 2. Equipment at approved sites may be serviced 3. Roads: Dust abatement or rock aggregate installation (does not include pit development) 4 Chainsaw operation associated with loading	Operations are prohibited

1. Suppression system equipment minimum requirements: 100 feet of one inch hose, minimum discharge distance of 50 feet, minimum pressure 100 PSI at discharge orifice, and sustainable for a minimum of 5 minutes.

FIRE PLAN FOR CONSTRUCTION AND SERVICE CONTRACTS

6-14-2006

(Ref: FSH 6309.32 and 6309.11)

1. SCOPE:

The provisions set forth below outline the responsibility for fire prevention and suppression activities and establish a suppression plan for fires within the contract area. The contract area is delineated by map in the contract. The provisions set forth below also specify conditions under which contract activities will be curtailed or shut down.

2. RESPONSIBILITIES:

A. Contractor

1. Shall abide by the requirements of this Fire Plan.
2. Shall take all steps necessary to prevent his/her employees, subcontractors and their employees from setting fires not required in completion of the contract, shall be responsible for preventing the escape of fires set directly or indirectly as a result of contract operations, and shall extinguish all such fires which may escape.
3. Shall permit and assist in periodic testing and inspection of required fire equipment. Contractor shall certify compliance with specific fire precautionary measures in the fire plan, before beginning operations during Fire Precautionary Period and shall update such certification when operations change.
4. Shall designate in the fire plan and furnish on Contract Area during operating hours a qualified fire supervisor authorized to act on behalf of Contractor in fire prevention and suppression matters.
5. Shall complete the Contractor's Plan Regarding Personnel and shall furnish the Contracting Officer (CO) with a copy prior to commencing work at the site. Shall currently advise the CO of any changes in personnel as the changes occur. Shall revise Section 6.B to reflect current activities upon request of the CO.

B. Forest Service

The Forest Service may conduct one or more inspections for compliance with the fire plan. The number, timing, and scope of such inspections will be at the discretion of agency employees responsible for contract administration. Such inspections do not relieve the Contractor of responsibility for correcting violations of the fire plan or for fire safety in general, as outlined in paragraph 2.A above.

3. **TOOLS AND EQUIPMENT:**

The Contractor shall comply with the following requirements during the fire precautionary period as defined by unit administering contracts unless waived in writing:

- Contractor shall equip each operating tractor and any other internal combustion engine with a spark arrester, except for motor vehicles equipped with a maintained muffler as defined in C.P.R.C. Section 4442 or tractors with exhaust-operated turbochargers. Spark Arresters shall be a model tested and approved under Forest Service Standard 5100-1a as shown in the National Wildlife Coordinating Group Spark Arrester Guide, Volumes 1 and 2, and shall be maintained in good operating condition.
- Contractor shall meet minimum requirements of Sections 4427 and 4428 of the California Public Resources Code (C.P.R.C.). Fire tools kept at each operating landing shall be sufficient to equip all employees in the felling, yarding, loading, chipping, and material processing operations associated with each landing. Fire equipment shall include two tractor headlights for each tractor dozer used in Contractor's Operations. Tractor headlights shall be attachable to each tractor and served by an adequate power source.
- Where cable yarding is used, Contractor shall provide a size 0 or larger shovel with an overall length of not less than 46 inches and a filled backpack can (4 or 5 gallon) with hand pump within 10 feet of each tail and corner block.
- Trucks, tractors, pickups and other similar mobile equipment shall be equipped with and carry at all times a size 0 or larger shovel with an overall length of not less than 46 inches and a 2-1/2 pound axe or larger with an overall length of not less than 28 inches.
- Contractor shall equip each internal combustion yarder, fuel truck, and loader with a fire extinguisher for oil and grease fires (4-A:60-B:C).
- Contractor shall equip each mechanized harvesting machine with hydraulic systems, powered by an internal combustion engine (chipper, feller/buncher, harvester, forwarder, hot saws, stroke delimber, etc), except tractors and skidders, with at least two 4-A:60-B:C fire extinguishers or equivalent. In addition, concentrations of wood dust and debris shall be removed from such equipment daily. Additional extinguishers and sizes may be required at landings in accordance with Section 5.
- Each power saw shall be equipped with a spark arrester approved according to C.P.R.C. Section 4442 or 4443 and shall be maintained in effective working order. One fire extinguisher meeting specifications of C.P.R.C. Section 4431 shall be kept with each operating power saw. A size 0 or larger shovel with an overall length of not less than 38 inches shall be kept with each gas can but not more than 300 feet from each power saw when used off cleared landing areas.

- Contractor shall meet minimum requirements of Section 4430 of the California Public Resources Code (C.P.R.C.). Contractor shall provide a water tank truck or trailer on or in proximity to Contract Area during Contractor 's Operations hereunder during Fire Precautionary Period unless otherwise agreed. When Project Activity Level B or higher is in effect, a tank truck or trailer shall be on or immediately adjacent to each active landing unless otherwise excepted when hot saw technology is being used. See Section 5 for specific contract requirements.
- The tank shall contain at least 300 gallons of water available for fire suppression. A water sprinkling tank truck will meet this requirement if provision is made to insure that the minimum of 300 gallons is available for fire suppression at all times. Ample power and hitch shall be readily available for promptly and safely moving tank over roads serving Contract Area. Tank truck or trailer shall be equipped with following:
 1. Pump, which at sea level, can deliver 23 gallons per minute at 175 pounds per square inch measured at the pump outlet. Pumps shall be tested on Contract Area using a 5/16 inch orifice in the Forester One Inch In-Line Gauge test kit. Pump shall meet or exceed the pressure value in the following table for nearest temperature and elevation:

T e m p	Sea Level		1000 Feet		2000 Feet		3000 Feet		4000 Feet		5000 Feet		6000 Feet		7000 Feet		8000 Feet		9000 Feet		10000 Feet	
55	179	23	174	23	169	23	165	22	161	22	157	22	153	22	150	21	146	21	142	21	139	21
70	175	23	171	23	166	22	162	22	158	22	154	22	150	21	147	21	143	21	139	21	136	20
85	171	23	168	23	163	22	159	22	155	22	151	21	147	21	144	21	140	21	136	20	133	20
100	168	23	164	23	159	22	155	22	152	22	148	21	144	21	141	21	137	20	133	20	131	20
	P S I	G P M	P S I	G P M	P S I	G P M	P S I	G P M	P S I	G P M	P S I	G P M	P S I	G P M	P S I	G P M	P S I	G P M	P S I	G P M	P S I	G P M

The pump outlet shall be equipped with 1-1/2 inch National Standard Fire Hose thread. A bypass or pressure relief valve shall be provided for other than centrifugal pumps.

2. 300 feet of 3/4-inch inside diameter rubber-covered high-pressure hose mounted on live reel attached to pump with no segments longer than approximately 50 feet, when measured to the extreme ends of the couplings. Hose shall have reusable compression wedge type 1-inch brass or lightweight couplings (aluminum or plastic). One end of hose shall be equipped with a coupling female section and the other end with a coupling male section. The hose shall, with the nozzle closed, be capable of withstanding 200 PSI pump pressure without leaking, distortions, slipping of couplings, or other failures.
3. A shut-off combination nozzle that meets the following minimum performance standards when measured at 100 P.S.I. at the nozzle:

	G.P.M.	Horizontal Range
Straight Stream	10	38 feet
Fog Spray	6 - 20	N/A

4. Sufficient fuel to run pump at least 2 hours and necessary service accessories to facilitate efficient operation of the pump.
- When Contractor is using Hot Saw Technology, an additional 500 feet of not less than one (1) inch outside diameter serviceable hard rubber poly or rubber lined or fiber jacket rubber lined (FJRL) hose shall be immediately available for use and be capable of connecting to the 300 feet of hose and appurturances in (2) and (3) above. Synthetic hose may be used by agreement.

Project Sign Inventory

United Water Conservation District Santa Felicia Project Sign Inventory

(Updated July 15, 2009)

This sign inventory has been developed for the Santa Felicia Project (Project), located in the lower reaches of Piru Creek, approximately 5 miles north of Piru, California in eastern Ventura County. The Project infrastructure is owned and operated by the United Water Conservation District (United *or* Licensee) and licensed by the Federal Energy Regulatory Commission (FERC) as Project Number 2153-012. Under 4(e) Condition No. 17(c) of the License issued by FERC, United is required to develop a Sign Plan and include the location, design, color, and message for the following types of signs:

- Information and education signs
- Fire Prevention signs
- Regulatory and warning signs
- Project license signs
- Road signs
- Recreation signs
- Directional signs to assist non-local visitors
- Safety signs

In June 2009, safety, traffic control, and informational signs located on and adjacent to Project roads and Project facility areas were inventoried and photographed. The general location of the signs was recorded and mapped. Data related to the condition, material type, and message of each sign was collected. Additional data related to signs located within the developed Project recreation areas was provided by United personnel, and “typical” photographs were taken of representative signs within the recreation areas.

The sign inventory, combining, both data sets, has been included in Table E-1. The map of sign locations (generally by facility) is included in Figure E-1. Photographs of the inventoried signs are included in Photo Log E-1.

Table E-1. Signs Associated with the Santa Felicia Project.

Location		Type of Sign¹	Quantity	Materials	Condition²	Content	Photo Number (See E-1 Photo Log)
Project Facilities							
Hydroplant	Fence	Safety/Warning	1	Painted aluminum sign on steel chain link fence	Fair	DANGER CONE VALVES OPEN AUTOMATICALLY	PL1-1
	Fence	Safety/Warning	6	Painted aluminum sign on steel chain link fence	Poor	DANGER HIGH VOLTAGE	PL1-2
	Fence	Safety/Warning	3	Painted aluminum sign on steel chain link fence	Poor	POSTED NO TRESPASSING KEEP OUT	PL1-3
	Outside hydroplant fence	Safety/Warning	1	Painted aluminum sign on tubular steel post	Fair	HELI SPOT WATER	PL1-4
Road to Hydroplant	Adjacent to road	Regulatory	1	Painted aluminum sign on tubular steel post	Fair	HYDROPLANT UNITED WATER CONSERVATION DISTRICT	PL2-1
South Entrance to United Property	Gate	Regulatory	1	Plastic sign on steel gate	Good	KEEP GATES CLOSED AND LOCKED AT ALL TIMES	PL3-1
	Fence	Regulatory	1	Painted metal sign on barbed wire fence	Fair	RESTRICTED AREA DAM OPERATOR'S RESIDENCE SFD SHOP AND HYDROPLANT PLEASE KEEP OUT UNITED WATER CONSERVATION DISTRICT	PL3-2
	Fence	Safety/Warning	1	Plastic sign on barbed wire fence	Good	WARNING PROPOSITION 65 COMPLIANCE STATEMENT IT IS THE RESPONSIBILITY OF THIS BUSINESS TO WARN ITS CUSTOMERS AND EMPLOYEES THAT PRODUCTS SOLD OR USED ON THESE PREMISES MAY CONTAIN CHEMICALS KNOWN TO THE STATE OF CALIFORNIA TO CAUSE CANCER OR BIRTH DEFECTS CALIFORNIA HEALTH AND SAFETY CODE SECTION 25249.5 ET SEQ. (English and Spanish)	PL3-3
	Fence	Regulatory	3	Painted metal sign on barbed wire fence	Good	NO TRESPASSING VIOLATORS WILL BE PROSECUTED PENAL CODE SEC. 602 UNITED WATER CONSERVATION DISTRICT (905) 525-4431	PL3-4
Shop and Fueling Facility	Wall	Safety/Warning	1	Decal/sticker on metal building	Good	NOTICE 1 2 1 HAZARD RATINGS	PL4-1
	Wall	Safety/Warning	1	Metal sign screwed to metal building	Fair	EMERGENCY SHUTOFF	PL4-2
	Tank	Safety/Warning	1	Decal/sticker on west side of fuel tank	Good	DANGER NO SMOKING OR OPEN FLAMES WITHIN 50 FT.	PL4-3
	Tank	Safety/Warning	1	Decal/sticker on west side of fuel tank	Good	1 3 0	PL4-3
	Tank	Safety/Warning	1	Decal/sticker on west side of fuel tank	Good	1203	PL4-3
	Tank	Safety/Warning	1	Decal/sticker on south side of fuel tank	Good	130	PL4-4
	Tank	Safety/Warning	1	Decal/sticker on east side of fuel tank	Good	DANGER NO SMOKING OR OPEN FLAMES WITHIN 50 FT.	PL4-5
	Tank	Safety/Warning	1	Decal/sticker on east side of fuel tank	Good	1203	PL4-5
	Tank	Safety/Warning	1	Decal/sticker on east side of fuel tank	Good	NO SMOKING FLAMMABLE	PL4-5
	Tank	Safety/Warning	1	Decal/sticker on north side of fuel tank	Fair	130	
	Tank	Safety/Warning	1	Painted on west side of diesel tank	Fair	0 2 0	PL4-6
	Tank	Safety/Warning	1	Decal/sticker on west side of fuel tank	Fair	1993	PL4-6
	Tank	Safety/Warning	1	Painted on west side of diesel tank	Fair	DIESEL NO SMOKING	PL4-6
	Tank	Safety/Warning	1	Decal/sticker on south side of diesel tank	Fair	1993	PL4-7
	Tank	Safety/Warning	1	Painted on south side of diesel tank	Fair	DIESEL NO SMOKING	PL4-7
	Tank	Safety/Warning	1	Decal/sticker on east side of diesel tank	Fair	1993	PL4-8
	Tank	Safety/Warning	1	Painted on east side of diesel tank	Fair	DIESEL NO SMOKING	PL4-8
	Tank	Safety/Warning	1	Decal/sticker on north side of diesel tank	Fair	1993	PL4-9
	Tank	Safety/Warning	1	Decal/sticker on west side of waste oil tank	Fair	0 1 0	PL4-10
	Tank	Safety/Warning	1	Painted on west side of waste oil tank	Fair	HAZARDOUS WASTE OIL	PL4-10

Location	Type of Sign¹	Quantity	Materials	Condition²	Content	Photo Number (See E-1 Photo Log)	
Project Facilities							
Shop and Fueling Facility (Continued)	Tank	Safety/Warning	1	Decal/sticker on west side of waste oil tank	Fair	1270	PL4-10
	Tank	Safety/Warning	1	Painted on west side of waste oil tank	Fair	WASTE OIL NO SMOKING	PL4-10
	Tank	Safety/Warning	1	Painted on south side of waste oil tank	Good	WASTE OIL NO SMOKING	PL4-11
	Tank	Safety/Warning	1	Decal/sticker on south side of waste oil tank	Fair	1270	PL4-11
	Tank	Safety/Warning	1	Decal/sticker on south side of waste oil tank	Good	HAZARDOUS WASTE (log)	PL4-11
	Tank	Safety/Warning	1	Decal/sticker on south side of waste oil tank	Fair	Accu. Date	PL4-11
	Tank	Safety/Warning	1	Decal/sticker on east side of waste oil tank	Fair	1270	PL4-12
	Tank	Safety/Warning	1	Decal/sticker on east side of waste oil tank	Fair	0 1 0	PL4-12
	Tank	Safety/Warning	1	Decal/sticker on north side of waste oil tank	Good	1270	PL4-13
	Post	Safety/Warning	1	Decal/sticker on post	Poor	EMERGENCY PROPANE SWITCH	PL4-14
	Wall	Safety/Warning	1	Decal/sticker on exterior wall of shop	Good	2 3 1	PL4-15
	Post	Regulatory	1	Painted metal sign on metal post	Good	SFD SHOP AND DAM OPERATOR'S RESIDENCE UNITED WATER CONSERVATION DISTRICT	PL4-16
	Post	Regulatory	1	Painted metal sign on metal post	Good	NO TRESPASSING VIOLATORS WILL BE PROSECUTED PENAL CODE SEC. 602	PL4-16
	Post	Regulatory	1	Painted metal sign on metal post	Good	HYDROPLANT UNITED WATER CONSERVATION DISTRICT	PL4-16
	Road to Shop and Fueling Facility	Post	Regulatory	1	Painted metal sign on metal post	Good	RESTRICTED AREA DAM OPERATOR'S RESIDENCE SFD SHOP AND HYDROPLANT PLEASE KEEP OUT UNITED WATER CONSERVATION DISTRICT
Post		Regulatory	1	Painted metal sign on metal post	Good	NO TRESPASSING VIOLATORS WILL BE PROSECUTED PENAL CODE SEC. 602 UNITED WATER CONSERVATION DISTRICT (905) 525-4431	PL5-1
Top of Dam, PL6	Post	Regulatory	1	Painted metal sign on metal post, west side	Fair	NO TRESPASSING VIOLATORS WILL BE PROSECUTED PENAL CODE SEC. 602 UNITED WATER CONSERVATION DISTRICT (905) 525-4431	PL6-1
	Post	Regulatory	1	Painted wood sign on metal post, west side	Poor	NO FIRES LAUNCHING NIGHT FISHING	PL6-1
	Post	Safety/Warning	1	Plastic sign on a metal post with wood backing, west side	Fair	No Swimming Symbol	PL6-1
	Wall	Regulatory	1	Painted metal sign on a block wall, west side	Good	DO NOT LITTER \$1,000 FINE	PL6-2
	Stone	I&E	1	Bronze plaque set in stone, west side	Good	SANTA FELICIA DAM CONSTRUCTED 1954-1955 BY THE UNITED WATER CONSERVATION DISTRICT OF VENTURA COUNTY BOARD OF DIRECTORS/FORMER DIRECTORS. DESIGNER/CONSTRUCTION CONTRACTORS/ETC.	PL6-3
	Wall	I&E	1	Metal plaque on block wall, west side	Good	HISTORIC CIVIL ENGINEERS LANDMARK SANTA FELICIA DAM The first dam in California constructed specifically so that storm runoff water could be stored for replenishing the underground water supply through controlled recharge. It was designed by civil engineer Julian Hinds. The bridge over the spillway was, when built, the longest post-tension concrete bridge in the world.	PL6-4
	Door	I&E	1	Decal/sticker on metal door of west side of block building, center of door	Good	USGS	PL6-5
	Pole	Safety/Warning	1	Painted lettering on metal pole	Fair	ALARM ACTUATED PUBLIC SAFETY EQUIPMENT	PL6-6
	Pole	Safety/Warning	1	Painted metal sign on metal post on side of dam	Poor	NO TRESPASSING	PL6-7
Access Road	Pole	Safety/Warning	1	Painted metal sign on metal post	Good	CAUTION VEHICLES WEIGHTING OVER 15,000 GVW ARE PROHIBITED U.W.C.D. (805) 525 4431	PL7-1

Location	Type of Sign¹	Quantity	Materials	Condition²	Content	Photo Number (See E-1 Photo Log)	
Project Facilities							
Gate to Access Road	Pole	Safety/Warning	1	Painted metal sign on metal post	Good	NO TRESPASSING VIOLATORS WILL BE PROSECUTED PENAL CODE SEC. 602	PL8-1
Recreation Facilities							
Entrance Kiosk	Kiosk wall	Regulatory	1	Painted metal sign on entrance kiosk building	Good	Fire regulations, Fireworks and Firearms	PL9-1
	Post	I&E	1	Painted metal sign on two wood 4x4 post to the east of the entrance kiosk	Good	Day use fees Boating, hunting, fireworks and shooting information	PL9-2
	Movable street sign	Temporary	1	Painted metal sign on a movable street maintenance sandwich board	Good	CAUTION DEBRIS ON THE LAKE	PL9-3
	Kiosk wall	Safety/Warning	1	Painted metal sign on entrance kiosk building	Good	No Swimming Symbol	PL9-4
	Kiosk wall	Regulatory	1	Plastic sign on entrance kiosk building	Good	NO SMOKING and Symbol	PL9-4
	Kiosk wall	Regulatory	1	Laminated cardboard on entrance kiosk building	Good	ZERO TOLERANCE NO FIREWORKS USE FIREWORKS, LOSE CAMPING PRIVILEGES (English and Spanish)	PL9-5
	Kiosk wall	Safety/Warning	1	Painted metal sign on entrance kiosk building	Good	WARNING PROPOSITION 65 COMPLIANCE STATEMENT IT IS THE RESPONSIBILITY OF THIS BUSINESS TO WARN ITS CUSTOMERS AND EMPLOYEES THAT PRODUCTS SOLD OR USED ON THESE PREMISES MAY CONTAIN CHEMICALS KNOWN TO THE STATE OF CALIFORNIA TO CAUSE CANCER OR BIRTH DEFECTS CALIFORNIA HEALTH AND SAFETY CODE SECTION 25249.5 ET SEQ. (English and Spanish)	PL9-5
	Post	I&E	1	Painted metal sign on metal pole	Good	Pedestrian Symbol	
	Post	Regulatory	1	Painted metal sign on metal pole	Good	CAUTION MERGING TRAFFIC	PL9-6
	Post	Regulatory	1	Painted metal sign on metal pole	Good	SPEED LIMIT 5	PL9-6
	Post	I&E	1	Painted metal sign on metal pole	Good	SPEED BUMP	PL9-7
	Post	Regulatory	1	Painted metal sign on metal pole	Good	DO NOT ENTER	
	Post	Regulatory	1	Painted metal sign on metal pole	Good	STOP	PL9-8
	Lake Piru Marina	Post	Direction	1	Painted wood sign on wood posts	Fair	LAKE PIRU LAUNCHING FACILITY Funded by: Department of Boating and Waterways and Department of Fish and Game, Wildlife Conservation Board, Operated by: United Water Conservation District
Post		Identification	1	Painted metal sign on metal pole	Good	BOAT RAMP MARINA	PL10-2
Post		Regulatory	1	Painted metal sign on metal pole	Good	NO PARKING OR FISHING NEAR RAMP	PL10-3
Post		Regulatory	1	Painted metal sign on metal pole	Good	NO PARKING ANY TIME	PL10-3
Post		Regulatory	1	Laminated cardboard sign on metal pole	Fair	NOT WANTED QUAGGA MUSSEL OUTLAWS...	PL10-3
Post		Safety/Warning	1	Painted metal sign on metal pole	Good	No Swimming Symbol	PL10-4
Post		Regulatory	1	Painted metal sign on metal pole	Good	NO PARKING ANY TIME	PL10-4
Post		Regulatory	1	Plastic sign on wood post	Good	HELP PROTECT LAKE PIRU, Quagga and Zebra Mussel warnings and regulations	PL10-5
Post		Regulatory	1	Painted metal sign on metal pole	Good	Welcome TO LAKE PIRU FOR YOUR SAFETY AND ENJOYMENT 1. Boating traffic is counter clockwise 2. Swimming allowed only in designated areas 3. All State and Federal Boating Laws enforced	PL10-6
Post		Regulatory	2	Painted metal sign on metal pole	Good	5 MPH	

Location		Type of Sign ¹	Quantity	Materials	Condition ²	Content	Photo Number (See E-1 Photo Log)
Recreation Facilities							
Lake Piru Marina (Continued)	Post	Regulatory	2	Painted metal sign on metal pole	Good	Handicap Parking Symbol	
	Post	Regulatory	2	Painted metal sign on metal pole	Good	STOP	
	Post	Regulatory	4	Painted metal sign on metal pole	Good	Do Not Enter	
	Post	Direction	3	Painted metal sign on metal pole	Good	EXIT, Right Arrow	
	Post	Direction	2	Painted metal sign on metal pole	Good	EXIT, Left Arrow	
Lower Oaks Campground	Post	Direction	1	Painted metal sign on wood pole	Good	Oak Lane Campground Campsites 2-1-234	PL11-1
	Post	Direction	1	Painted metal sign on wood pole	Good	Group Camp #1	PL11-1
	Post	Direction	1	Metal sign on metal pole	Good	Swimming Symbol	PL11-2
	Post	Direction	1	Metal sign on metal pole	Good	Boat launch Symbol	PL11-2
	Post	Direction	1	Metal sign on metal pole	Good	Picnic Symbol	PL11-2
	Post	Direction	1	Metal sign on metal pole	Good	Directional arrow Symbol	PL11-2
	Post	Direction	1	Metal sign on metal pole	Good	Trailer Parking Symbol	PL11-2
	Post	Direction	1	Metal sign on metal pole	Good	Directional arrow Symbol	PL11-2
	Post	Direction	1	Metal sign on metal pole	Good	Tent Symbol	PL11-2
	Post	Direction	1	Metal sign on metal pole	Good	Double Arrow Symbol	PL11-2
Oak Lane Campground	Post	Direction	1	Metal sign on metal pole	Good	WEST WAY	PL12-1
	Post	Regulatory	1	Painted metal sign metal pole	Good	5 MPH	
	Post	I&E	1	Painted metal sign metal pole	Good	Children Playing (yellow)	
Reasoner Canyon Picnic Area	Post	Temporary	1	Empty wood sign board for temporary signs	Fair	Empty	PL13-1
	Post	Regulatory	5	Painted metal sign on metal pole	Good	Handicap Parking Symbol	PL13-2
	Door	Safety/Warning	1	Decal/sticker on wood door of block building	Fair	DANGER HIGH VOLTAGE KEEP OUT	PL13-3
	Post	Regulatory	2	Painted metal sign on metal pole	Good	DO NOT ENTER	
	Post	Regulatory	3	Painted metal sign on metal pole	Good	WRONG WAY	
Reasoner Canyon Picnic Area Overflow	Post	Regulatory	5	Painted metal sign on metal pole	Good	Handicap Parking Symbol	
	Post	Regulatory	1	Painted metal sign on metal pole	Fair	PICNIC OVERFLOW	
Juan Fernandez Boat Launch Area	Post	Regulatory	1	Metal sign on metal pole	Good	NO PARKING IN AREAS MARKED AS FIRE LANE VEHICLES WILL BE CITED OR TOWED AT OWNER'S EXPENSE POLICE/SHERIFF PHONE NUMBER C.V.C 225500.1 C.V.C 73658 (A)	PL14-1
	Post	Directional	1	Metal sign on metal pole	Good	GET READY AREA MAXIMUM 10 MINUTE LIMIT (BEGIN)	PL14-2
	Post	Safety/Warning	1	Metal sign on metal pole	Good	WARNING UNEVEN BOTTOM SHARP DROP OFF NO LIFEGUARD ON DUTY SWIM AT OWN RISK	PL14-3
	Post	Safety/Warning	1	Metal sign on metal pole	Good	ADVERTENCIA FONDO DE SIGUAL Oaida a profundidad rapida no salvavidas de servicio nada a riesgo propio	PL14-3
	Post	Safety/Warning	1	Metal sign on metal pole	Good	WARNING NO LIFEGUARD ON DUTY SWIM AT OWN RISK	PL14-4
	Post	Regulatory	1	Metal sign on metal pole	Good	DRAFTING HYDRANT ONLY 5000 GALLONS	PL14-5
	Post	Safety/Warning	5	Metal sign on metal pole	Good	Handicap Parking Symbol	PL14-6

¹Types of signs: Direction, Identification, Regulator/Rule, Information and Education (I&E), and Safety/Warning

² Condition: Good - Sign is new or in good, undamaged condition; Fair - Sign is functional but has signs of damage or wear (flaking paint, fading, damaged mounts); Poor - Sign is no longer functional, missing, or it is so damaged it should be replaced.

³See Attached Photo Log E-1: Santa Felicia Project Sign Survey

Photo Log E-1: Santa Felicia Project Sign Survey

Additional information related to signs identified on Project roads and within Project facilities and recreation areas is included in Table E-1.



PL1-1



PL1-2



PL1-3:



PL1-4

Photo Log E-1: Santa Felicia Project Sign Survey

Additional information related to signs identified on Project roads and within Project facilities and recreation areas is included in Table E-1.



PL2-1



PL3-1



PL3-2



PL3-3

Photo Log E-1: Santa Felicia Project Sign Survey

Additional information related to signs identified on Project roads and within Project facilities and recreation areas is included in Table E-1.



PL3-4



PL4-1



PL4-2



PL4-3

Photo Log E-1: Santa Felicia Project Sign Survey

Additional information related to signs identified on Project roads and within Project facilities and recreation areas is included in Table E-1.



PL4-4



PL4-5



PL4-6



PL4-7

Photo Log E-1: Santa Felicia Project Sign Survey

Additional information related to signs identified on Project roads and within Project facilities and recreation areas is included in Table E-1.



PL4-8



PL4-9



PL4-10



PL4-11

Photo Log E-1: Santa Felicia Project Sign Survey

Additional information related to signs identified on Project roads and within Project facilities and recreation areas is included in Table E-1.



PL4-12



PL4-13



PL4-14



PL4-15

Photo Log E-1: Santa Felicia Project Sign Survey

Additional information related to signs identified on Project roads and within Project facilities and recreation areas is included in Table E-1.



PL4-16



PL5-1



PL6-1



PL6-2

Photo Log E-1: Santa Felicia Project Sign Survey

Additional information related to signs identified on Project roads and within Project facilities and recreation areas is included in Table E-1.



PL6-3



PL6-4



PL6-5



PL6-6

Photo Log E-1: Santa Felicia Project Sign Survey

Additional information related to signs identified on Project roads and within Project facilities and recreation areas is included in Table E-1.



PL6-7



PL7-1



PL8-1

Campfires: Visitors must observe all posted fire restrictions. Campfires are permitted subject to the following conditions:

1. Visitors must confine all fires to a designated grill, fire ring, or other such facility as provided.
2. Campfires must be controlled and attended at all times and completely extinguished before a site is vacated.
3. Fires are not permitted during periods of high winds, or during other conditions determined to be unsafe by authorized staff or the local fire district.
4. Fires must be kept to a reasonable and safe size.
5. The use of personal outdoor grills for fires shall not be permitted, with the exception of portable gas grills.

Fireworks and Firearms: No person shall discharge fireworks or any other explosive device within a recreation area without a special use permit.

PL9-1

Photo Log E-1: Santa Felicia Project Sign Survey

Additional information related to signs identified on Project roads and within Project facilities and recreation areas is included in Table E-1.



PL9-2



PL9-3



PL9-4



PL9-5

Photo Log E-1: Santa Felicia Project Sign Survey

Additional information related to signs identified on Project roads and within Project facilities and recreation areas is included in Table E-1.



PL9-6



PL9-7



PL9-8



PL10-1

Photo Log E-1: Santa Felicia Project Sign Survey

Additional information related to signs identified on Project roads and within Project facilities and recreation areas is included in Table E-1.



PL10-2



PL10-3



PL10-4



PL10-5

Photo Log E-1: Santa Felicia Project Sign Survey

Additional information related to signs identified on Project roads and within Project facilities and recreation areas is included in Table E-1.



PL10-6



PL11-1



PL11-2



PL12-1

Photo Log E-1: Santa Felicia Project Sign Survey

Additional information related to signs identified on Project roads and within Project facilities and recreation areas is included in Table E-1.



PL13-1



PL13-2



PL13-3



PL14-1

Photo Log E-1: Santa Felicia Project Sign Survey

Additional information related to signs identified on Project roads and within Project facilities and recreation areas is included in Table E-1.



PL14-2



PL14-3



PL14-4



PL14-5

Photo Log E-1: Santa Felicia Project Sign Survey

Additional information related to signs identified on Project roads and within Project facilities and recreation areas is included in Table E-1.



PL14-6