

- PTP Overview
- How we got through 2013
- Credit deficit for 2013 PTP Wells
- Credits redemption program moving forward

Total Area Served = 4,600 AC+-  
Average PTP deliveries = 8,346 AF  
Number of Turnouts= 62  
Number of parcels with active wells 35 (includes domestic, irrigation and standby wells)

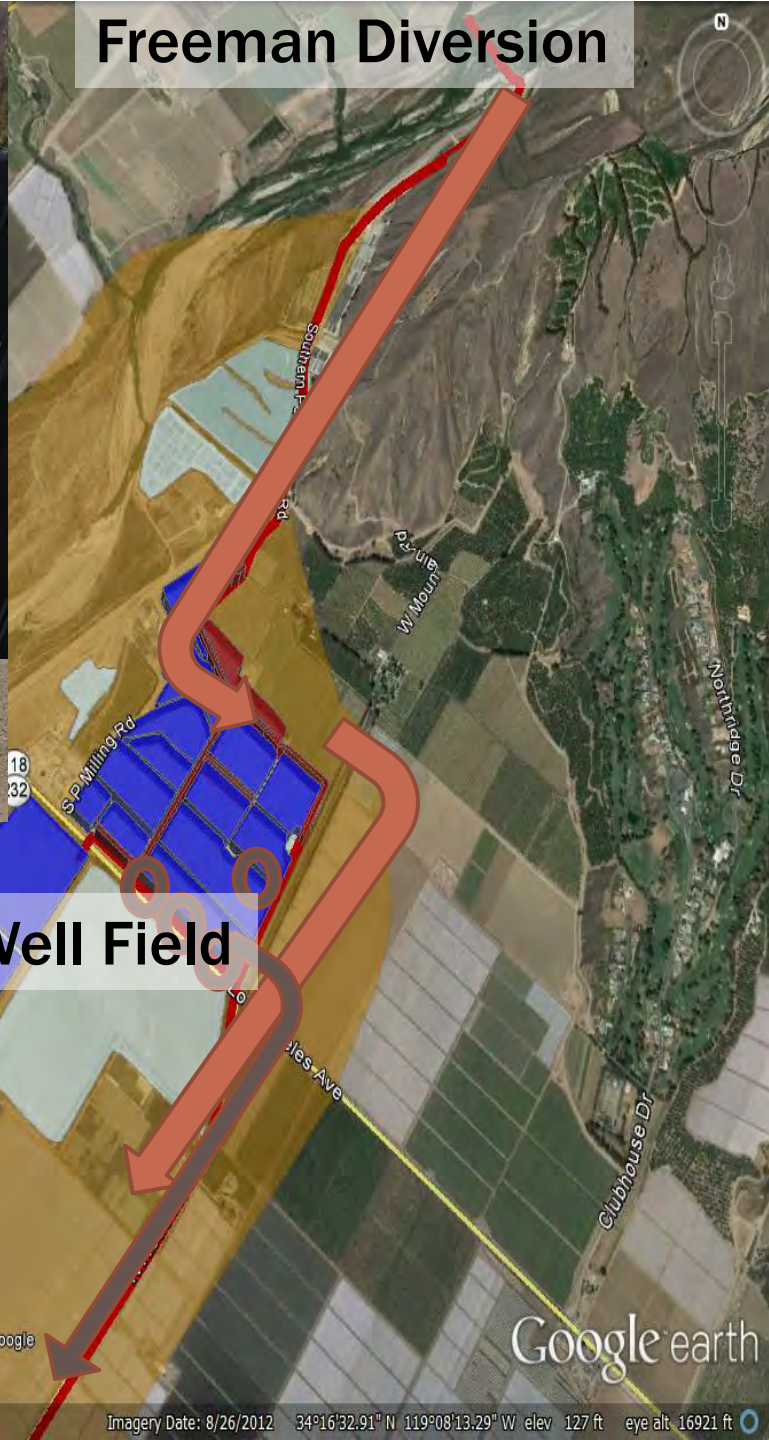
PTP  
Pipeline



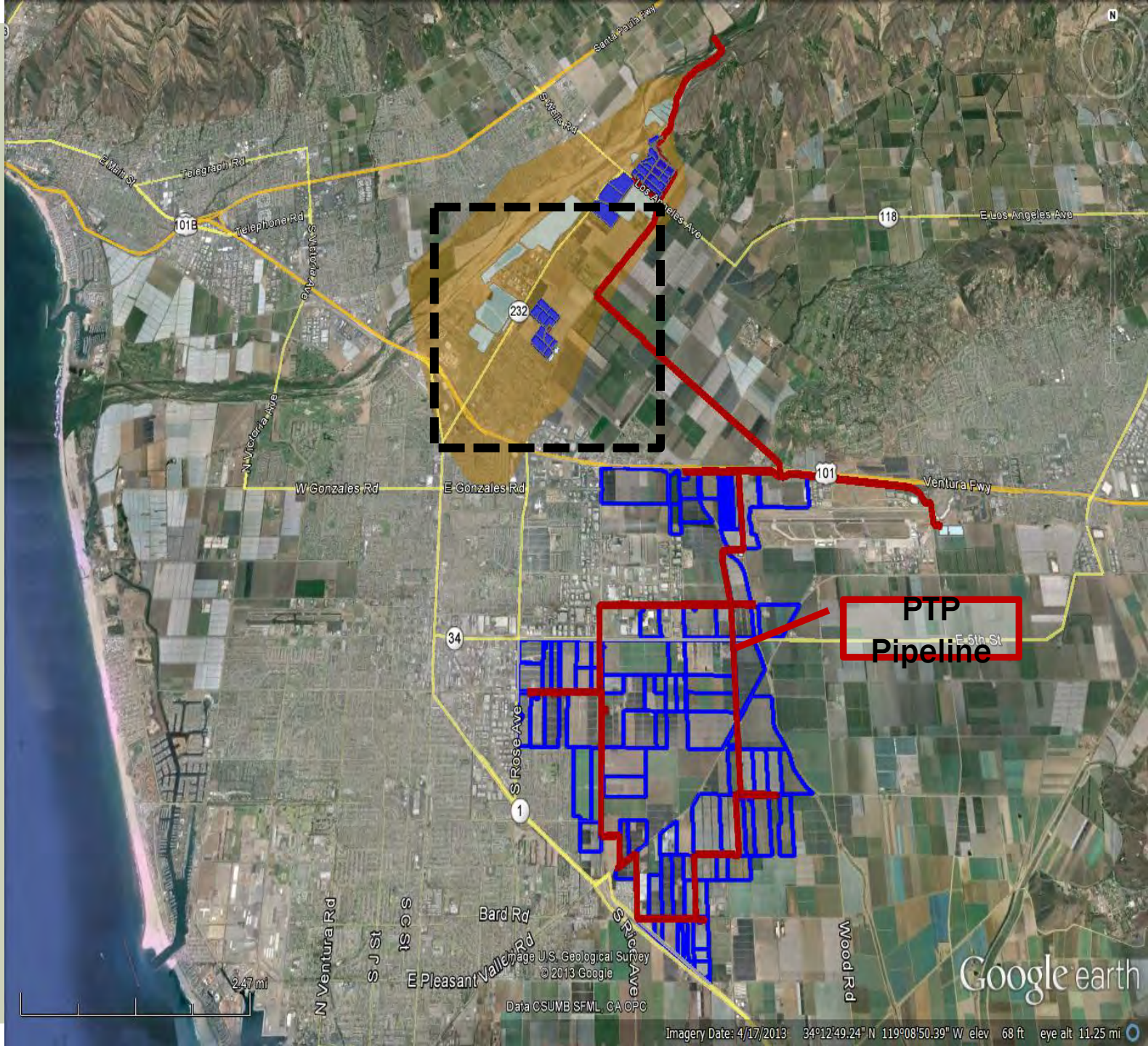
# Freeman Diversion



## Saticoy Well Field





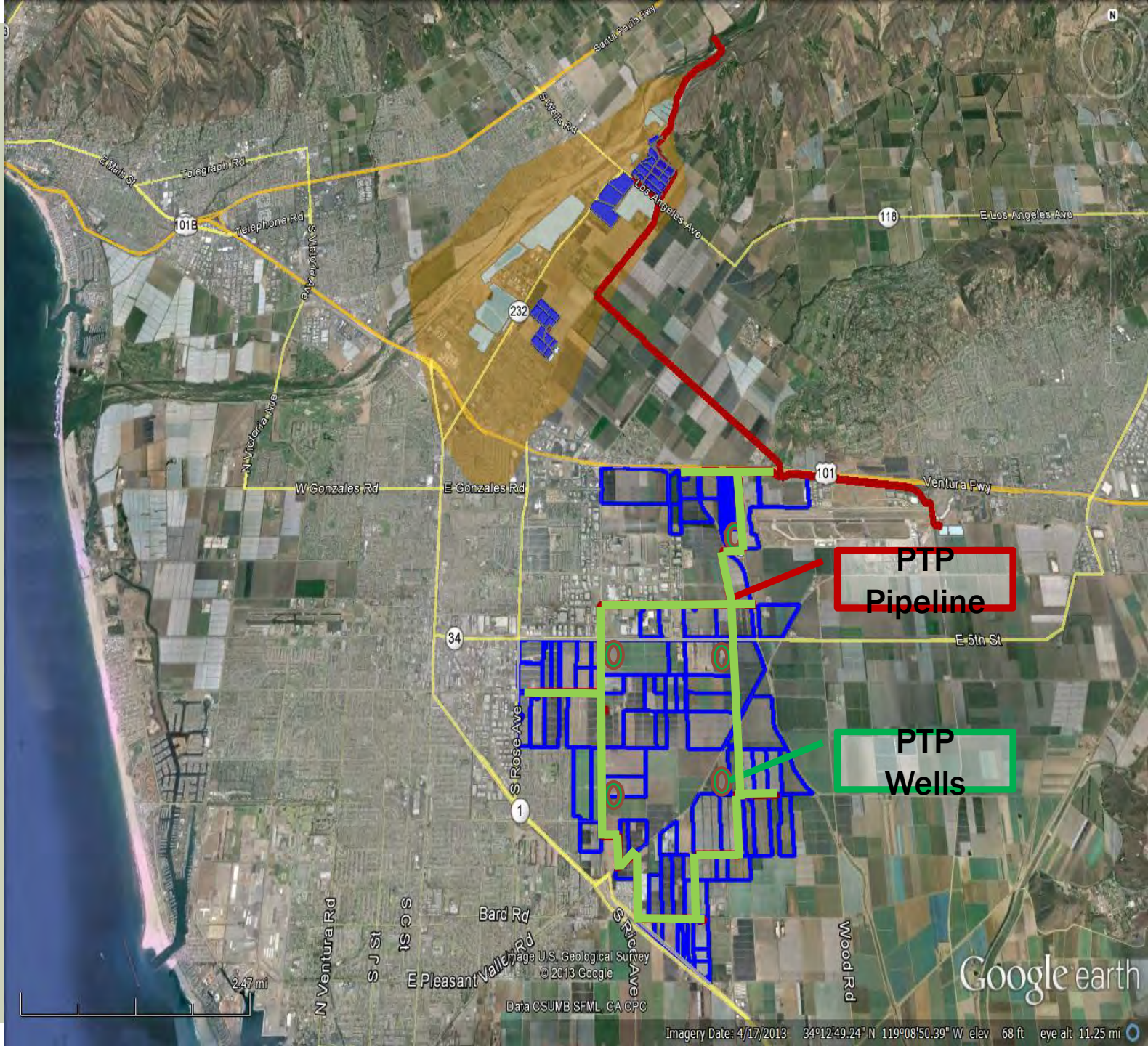


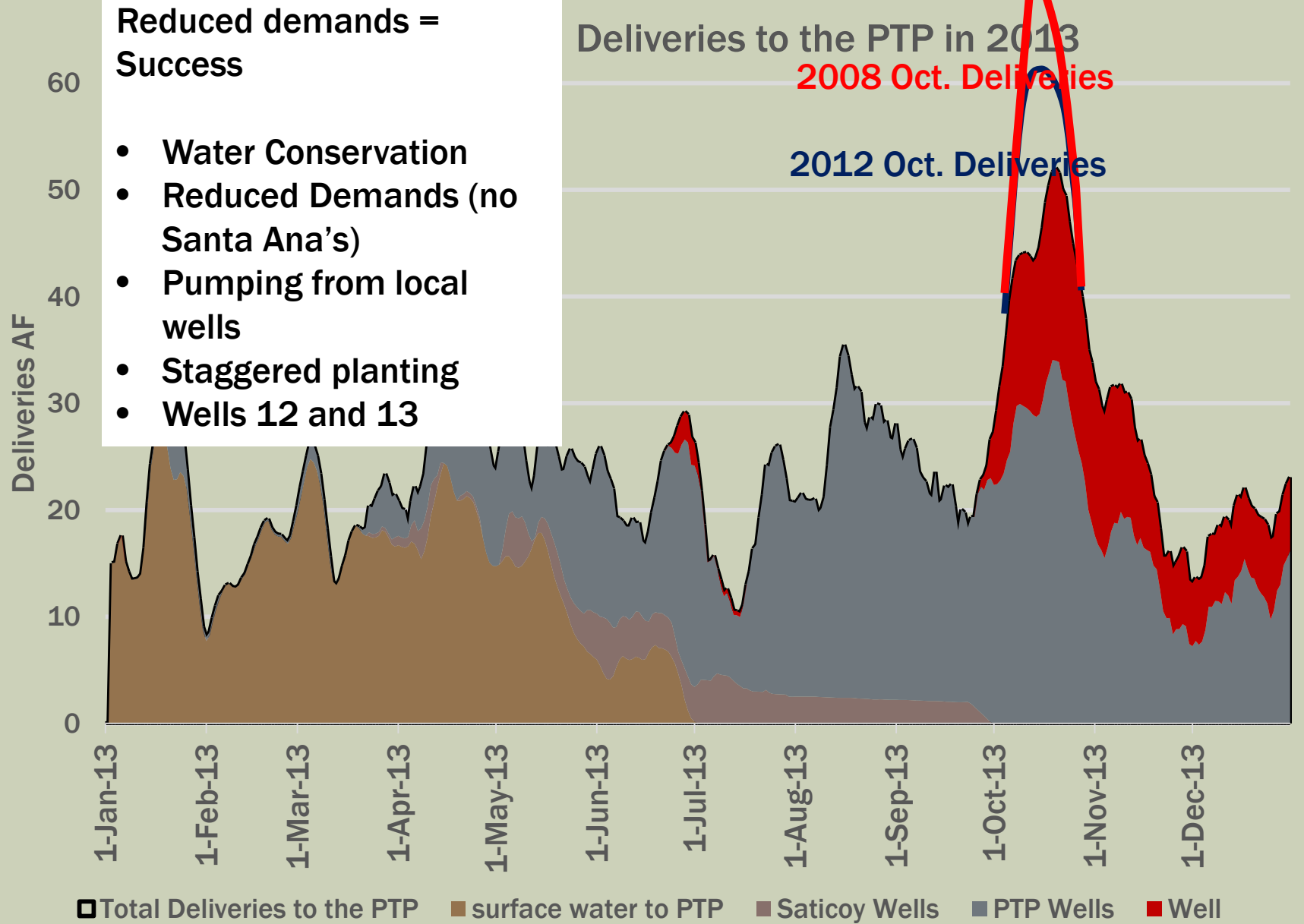


# OH Wells 12 & 13









**Surface Water from Freeman Diversion**

## **GMA Allocation Period 1985-1989**

**1985-1989 parcel received an allocation**

**1987-1989 UWCD PTP wells obtain its allocation**

**Example Parcel**

**Turnout**

**United's PTP Wells 1-5  
GMA Allocation**

**PTP Pipeline**

**GMA Allocation for the Well**



## Surface Water from Freeman Diversion

Example of how most parcels have obtained credits in the past

Example:

GMA allocation= 200 AF

Well usage= 30 AF

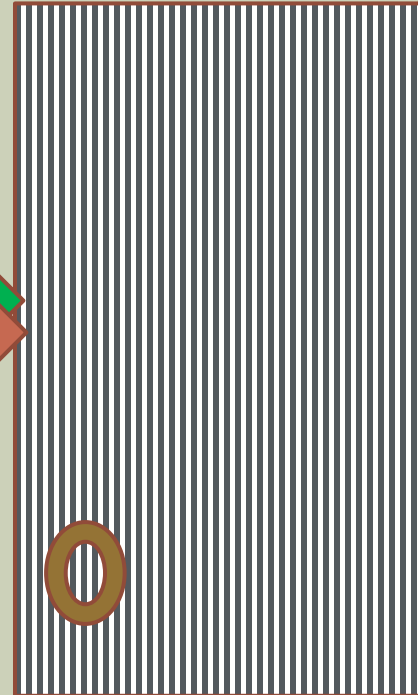
United Surface Water = 170 AF

United PTP pumping = 40 AF

Credits Obtained from GMA=  
 $200 - 30 = 170$  credits

Turnout

United's PTP Wells 1-5  
GMA Allocation





# Plans for the 2013 deficit of the allocations

## UWCD deliveries to PTP in 2013:

PTP well 1-5 pumping.....	4,647 AF
OH well 12 & 13.....	998 AF
Saticoy Well Field.....	349 AF
Surface Water Deliveries....	2,618 AF

## Accumulation of PTP GMA Credits

Accumulated before 2013....	1,967 AF
2013.....	1,489 AF
Total.....	3,456 AF

## Total Credits needed for the GMA

PTP pumping.....	4,647 AF
+OH Well 12 and 13.....	998 AF
<u>- Accumulated Credits.....</u>	<u>3,456 AF</u>

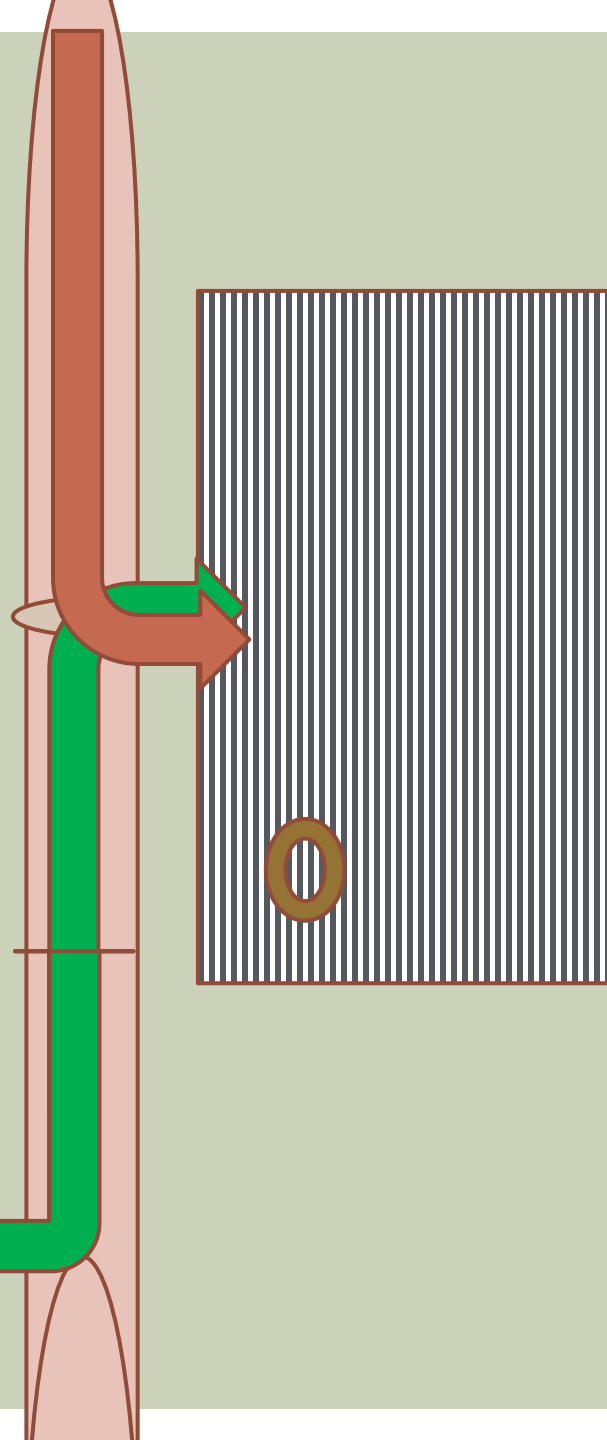
**2,189 credits**

# Going forward: Basics of the Proposed Credit System

**For the original users: (turnouts established during the GMA Base period)**

- The PTP's allocation of 1,489 AF be allocated to the original users based on their receipt of groundwater during the GMA base period.
- All deliveries from the PTP wells, OH wells or Saticoy Wells will be debited against the sub allocation .
- Unused allocations will be accrued by the individual turn-out.
- If groundwater usage exceeds the accrued credits, they must transfer groundwater credits or pay the GMA surcharge.

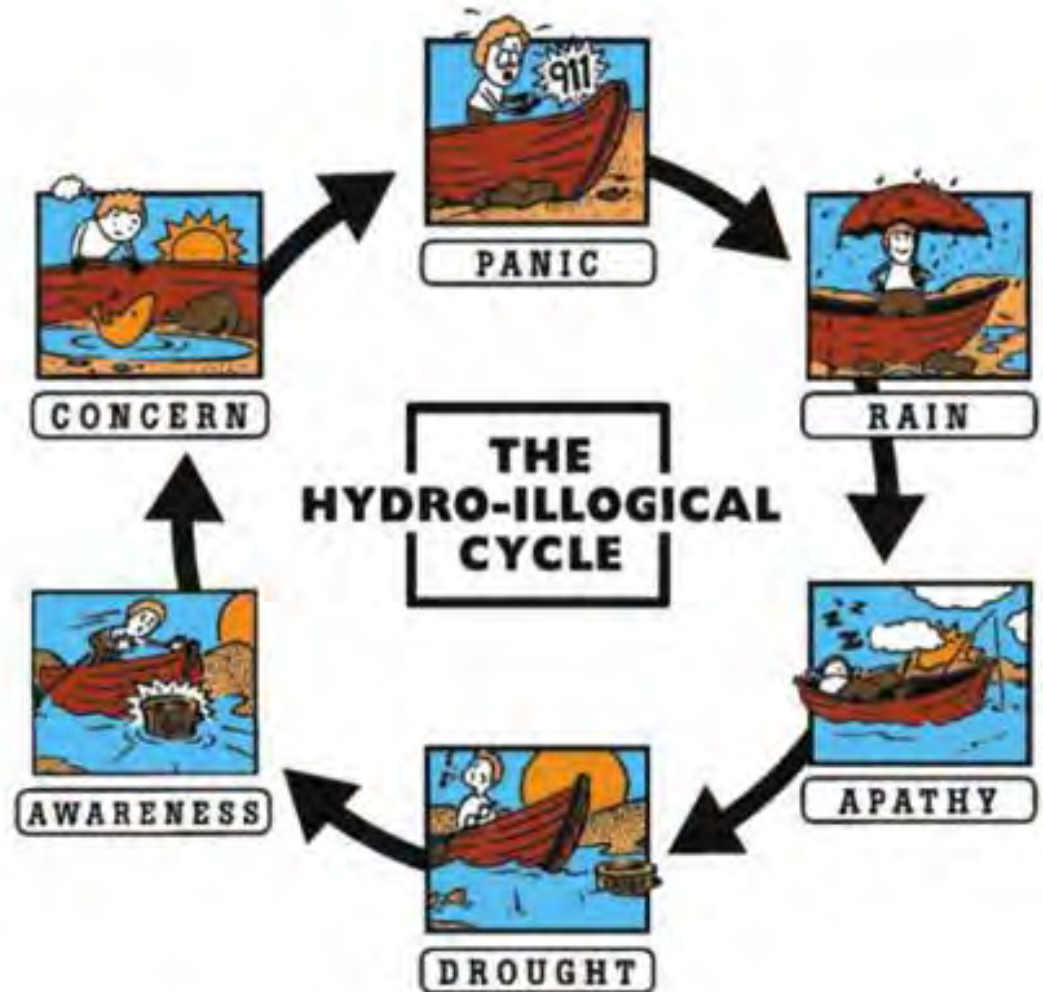
United's PTP Wells 1



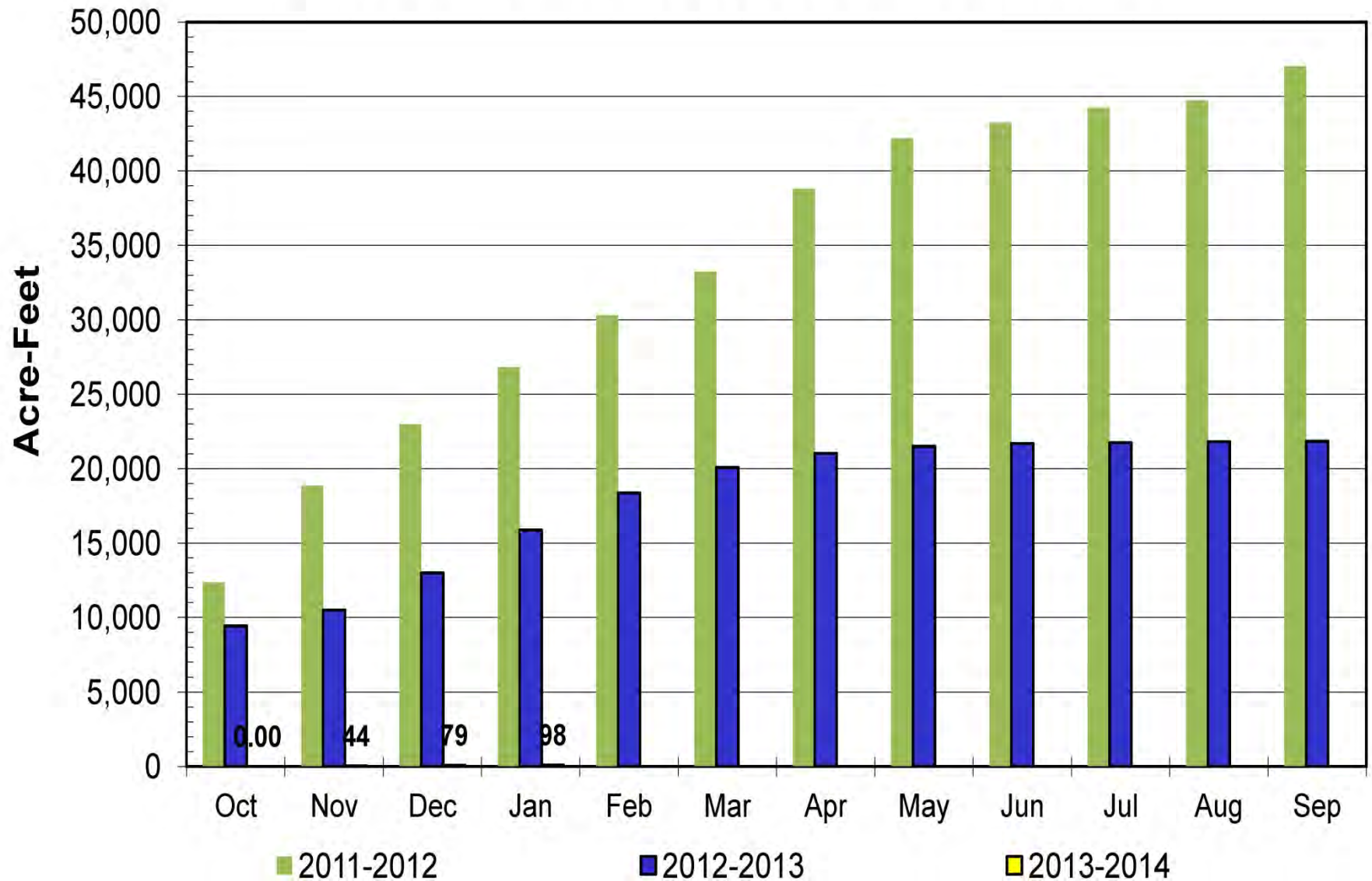


# GROUNDWATER CONDITIONS UPDATE

- Forebay Available Storage
- WLEs
- Water Quality
- Impacts

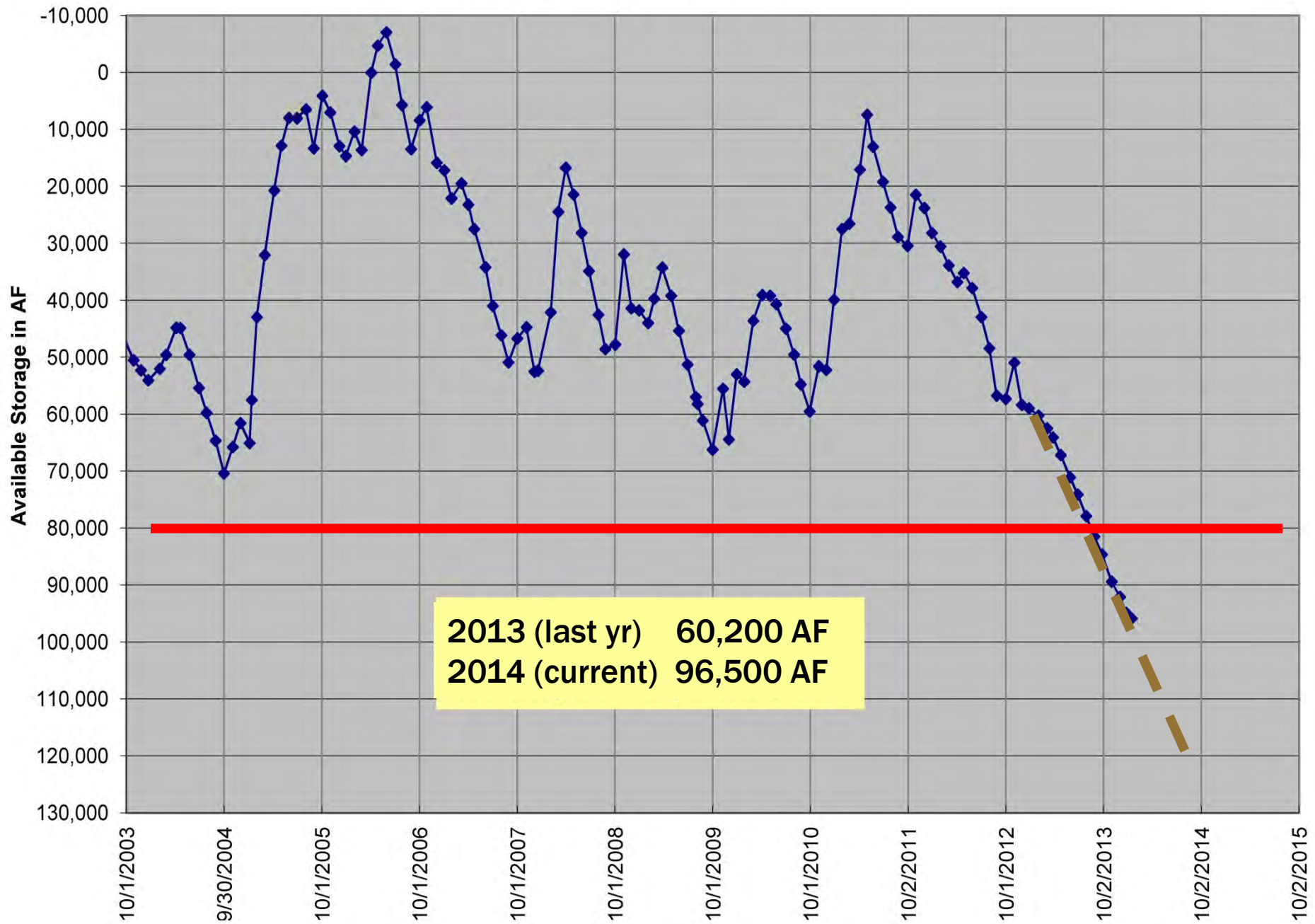


# Cumulative Freeman Diversion

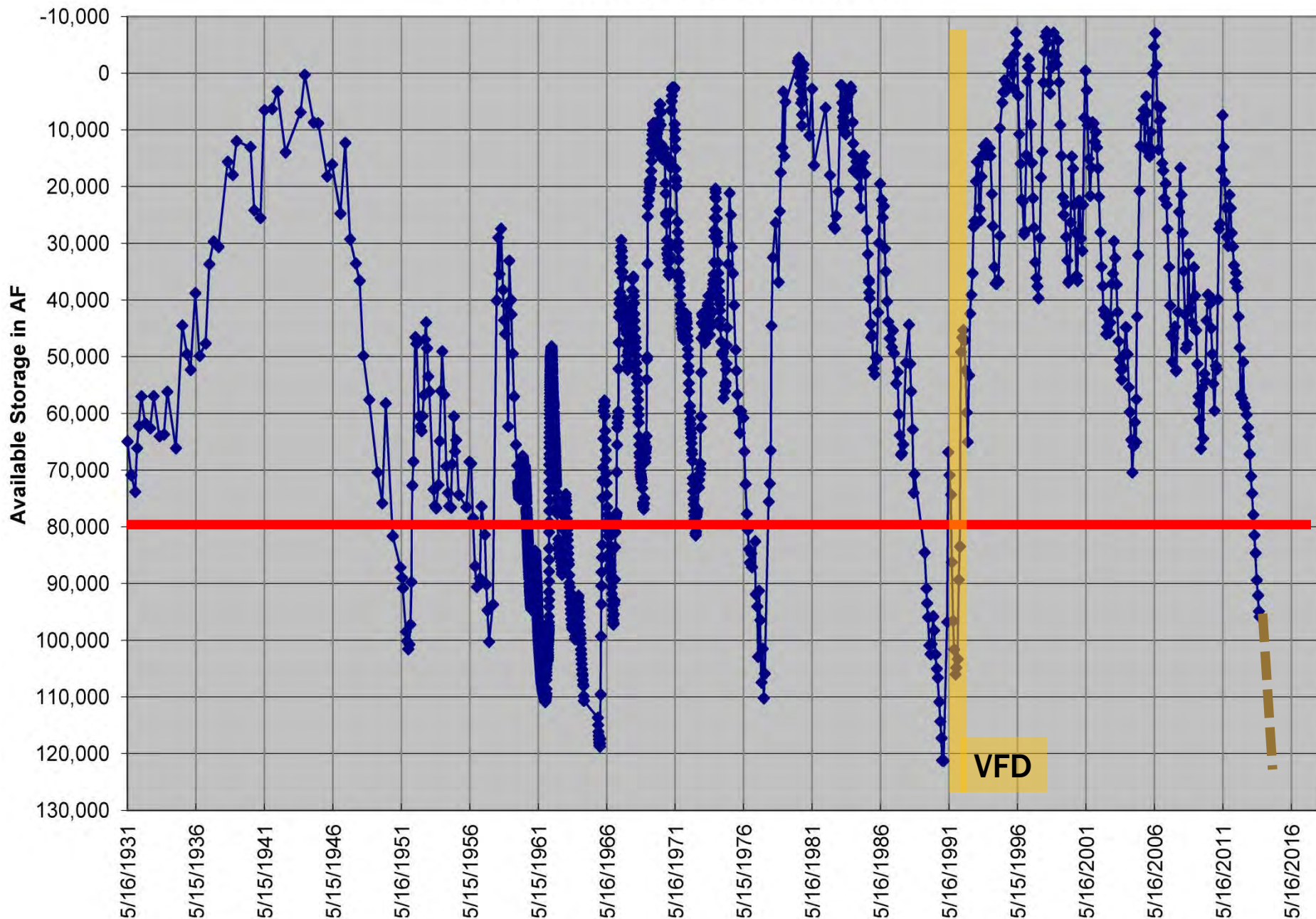




## Available Storage in the Forebay Basin

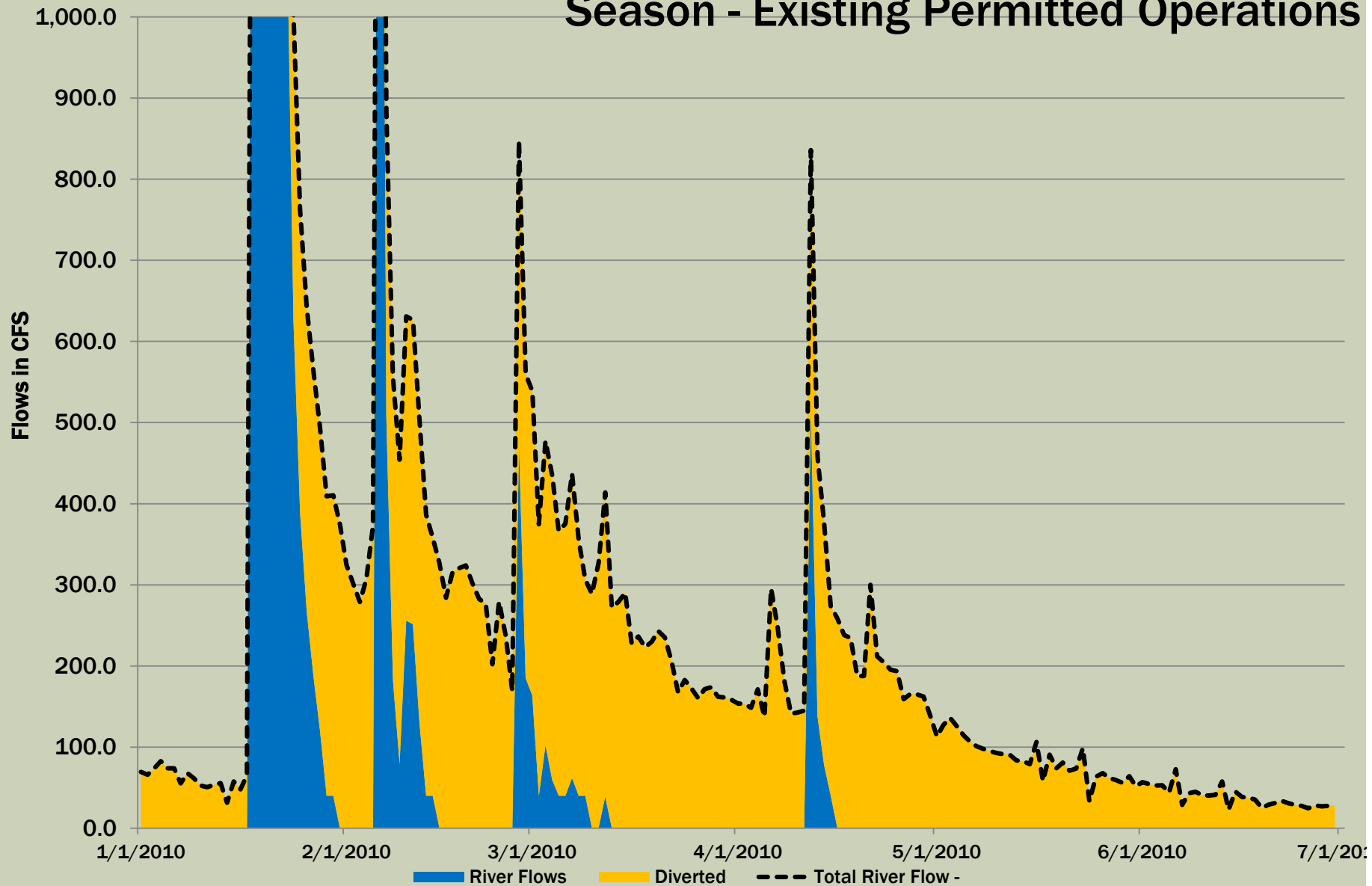


Available Storage in the Forebay Basin

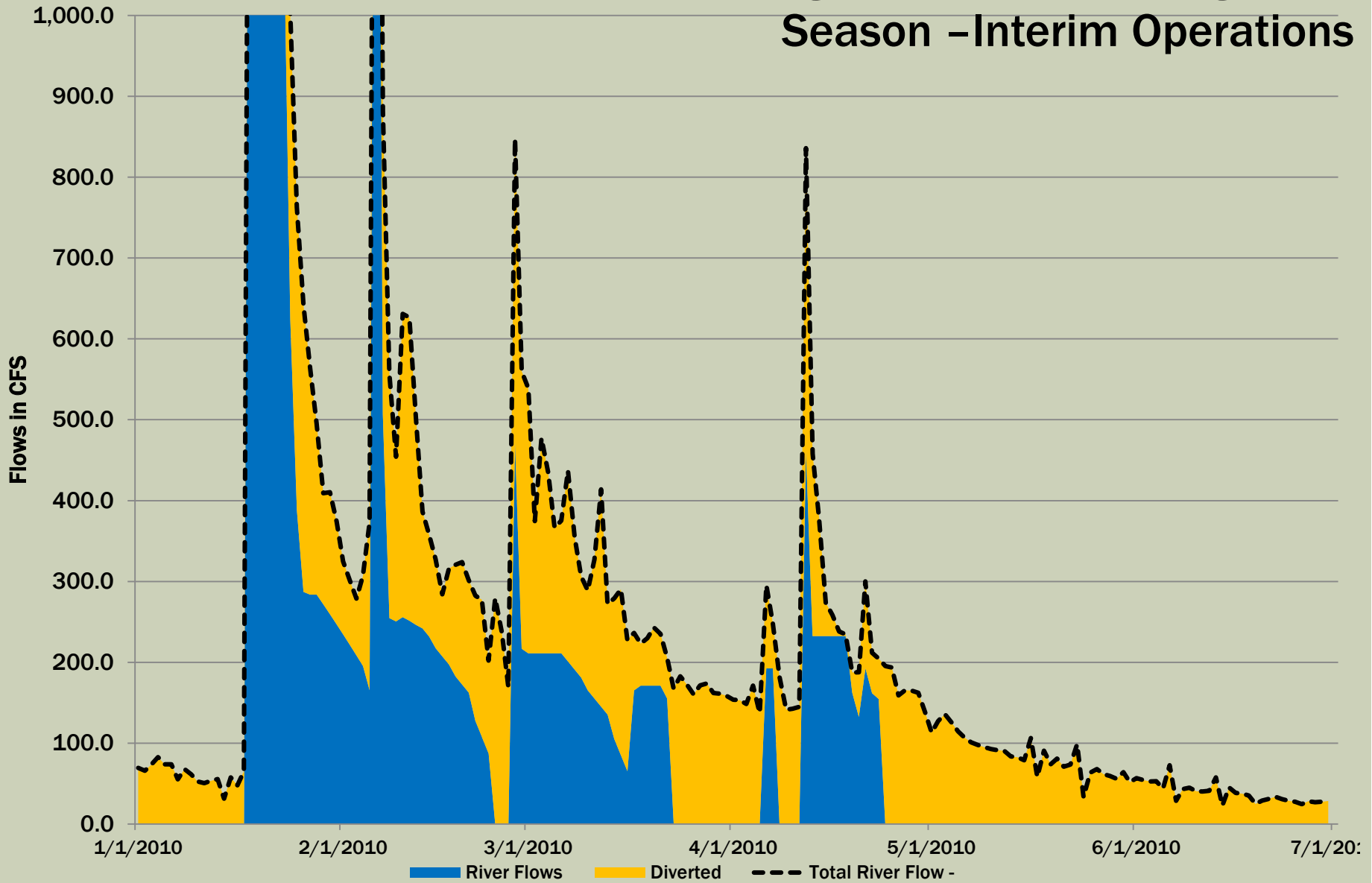




# Water Allocations during Representative Migration Season - Existing Permitted Operations

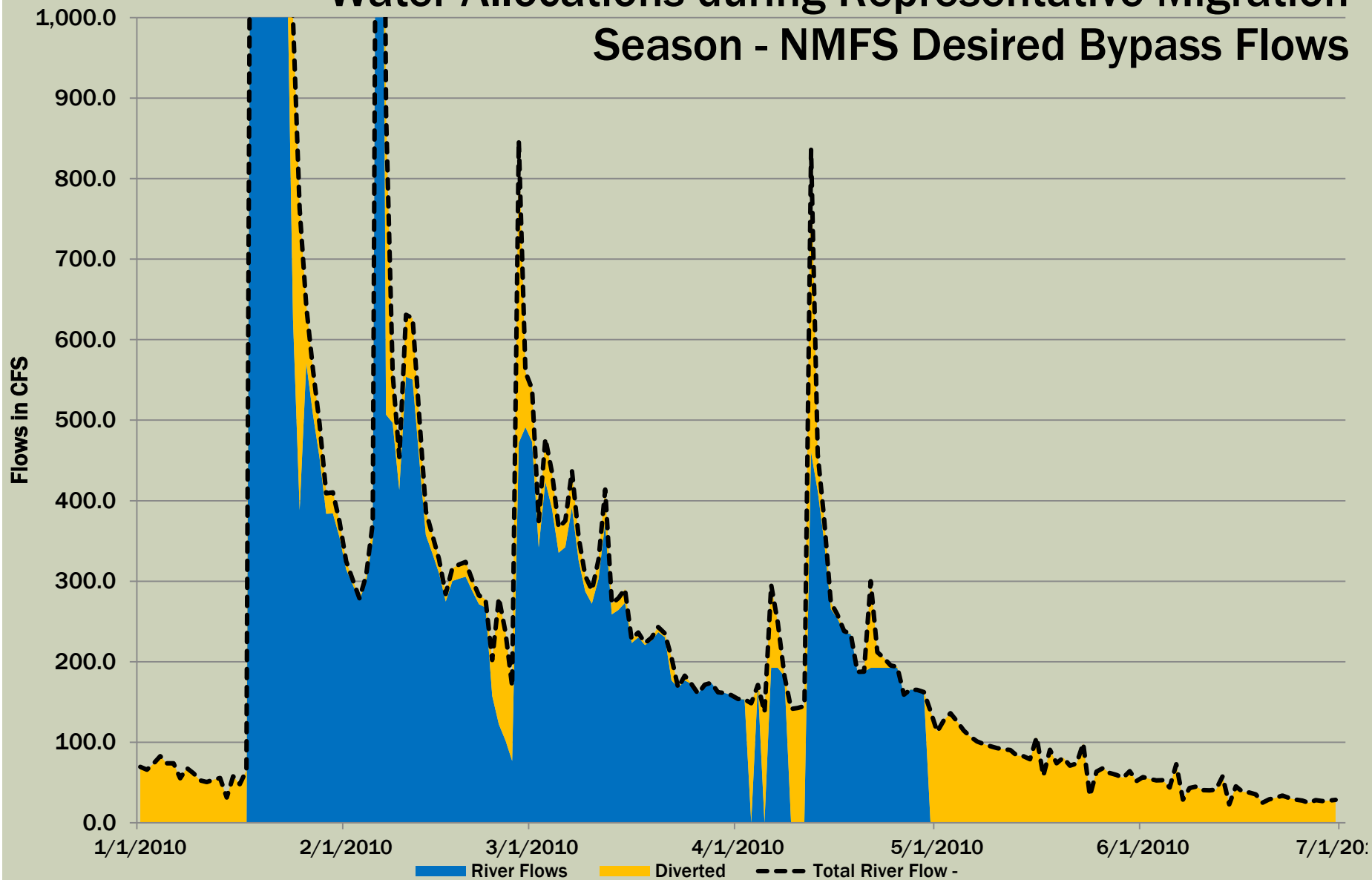


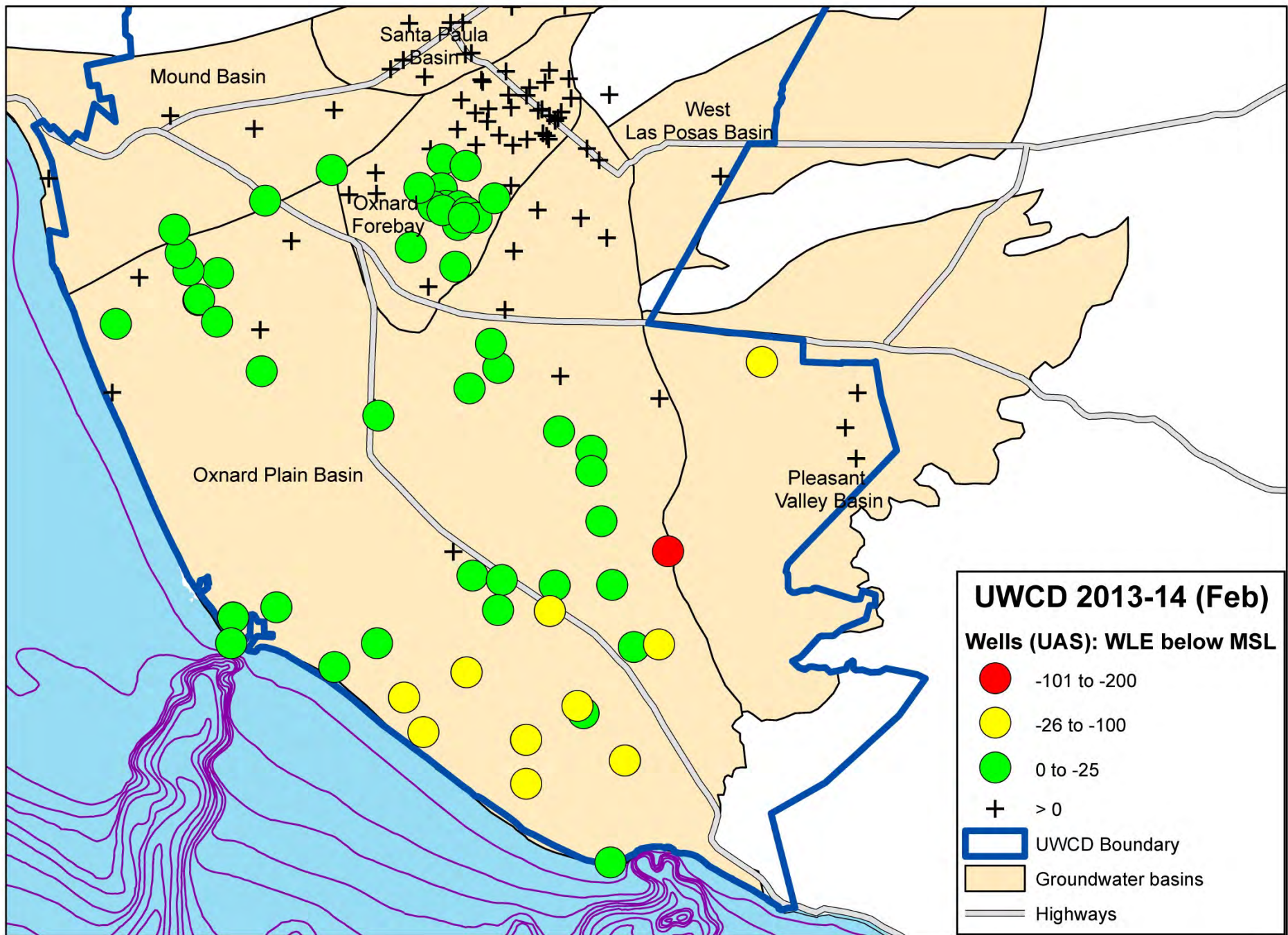
# Water Allocations during Representative Migration Season – Interim Operations





# Water Allocations during Representative Migration Season - NMFS Desired Bypass Flows

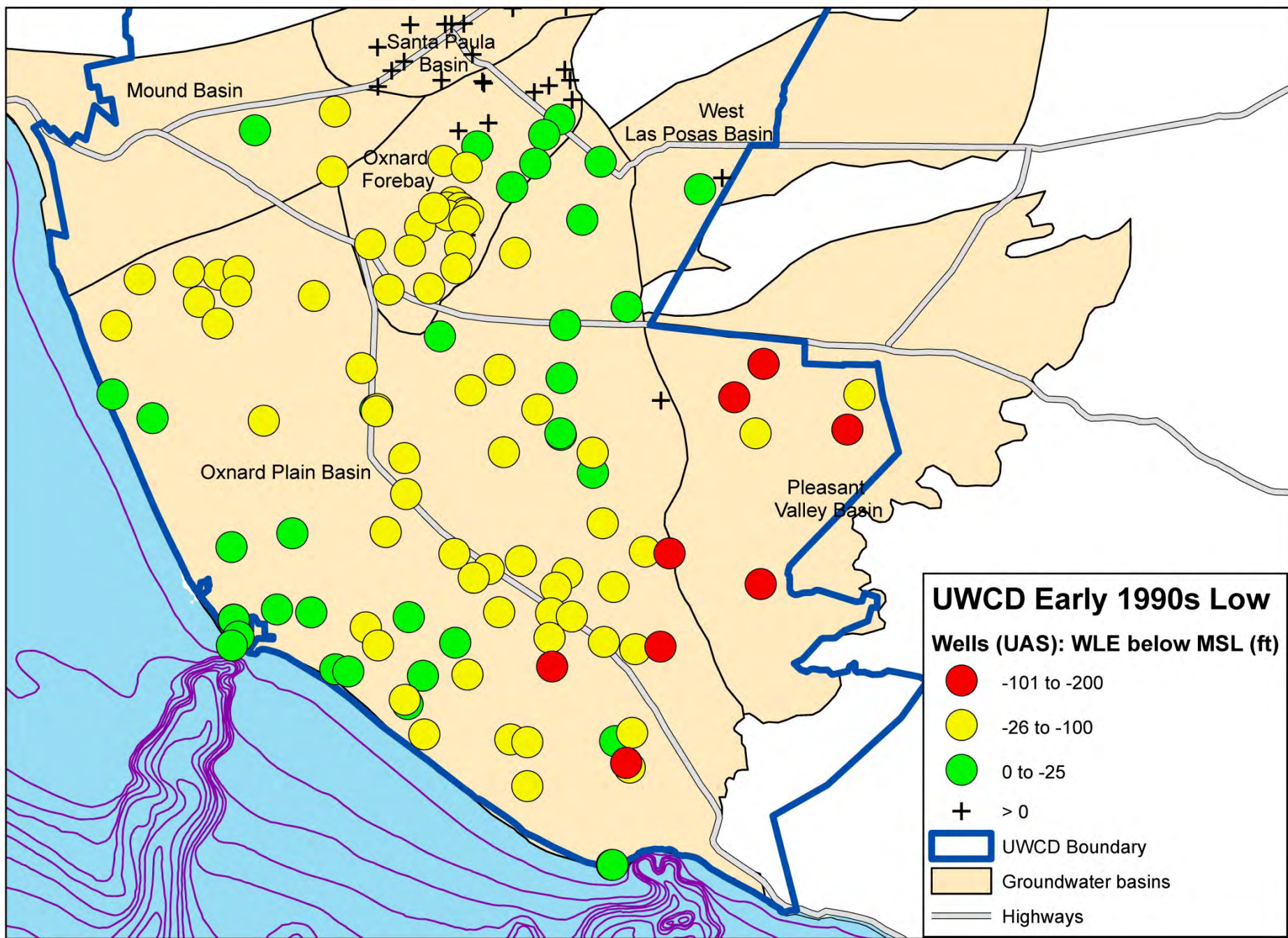




0 0.75 1.5 3 4.5 6 Miles



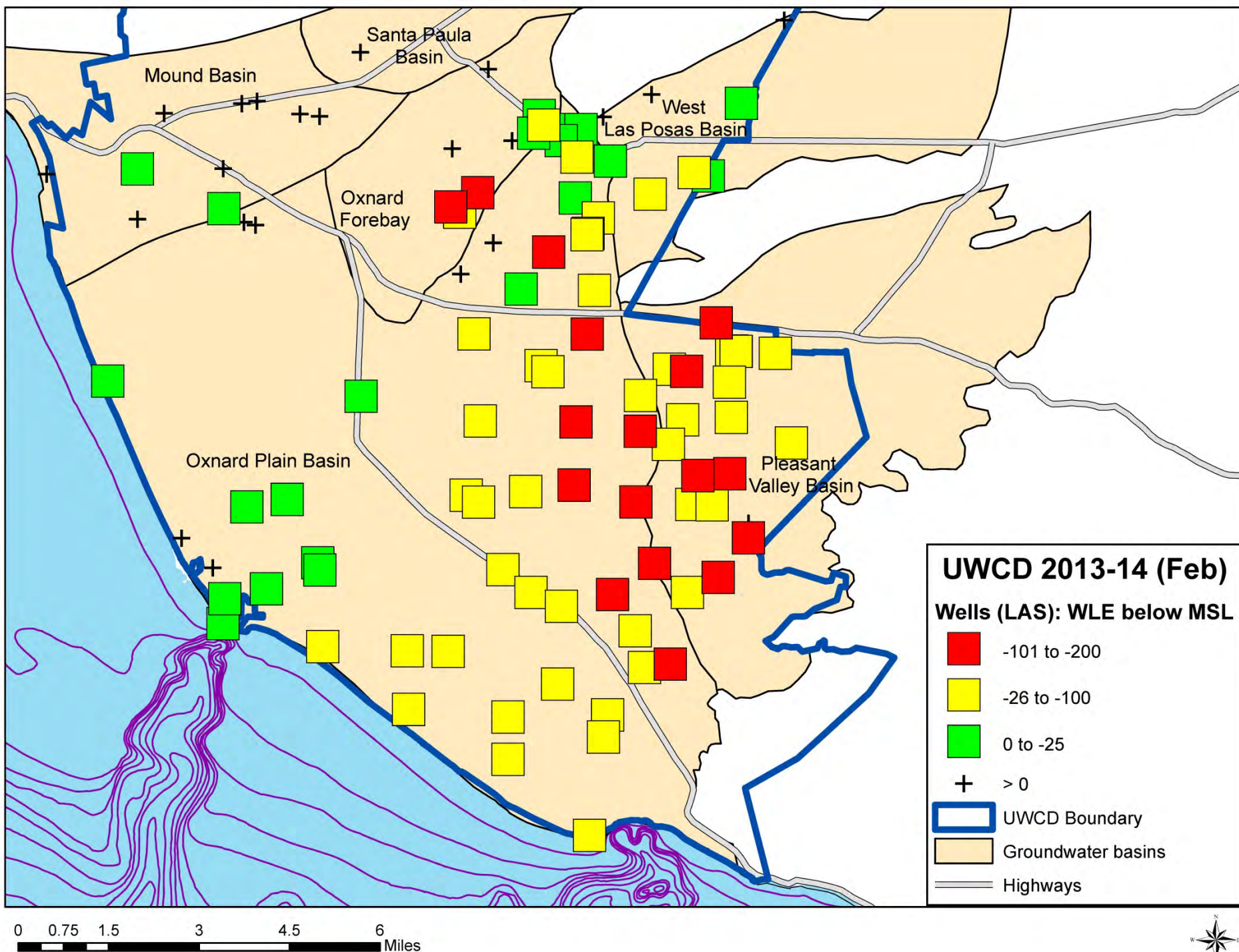




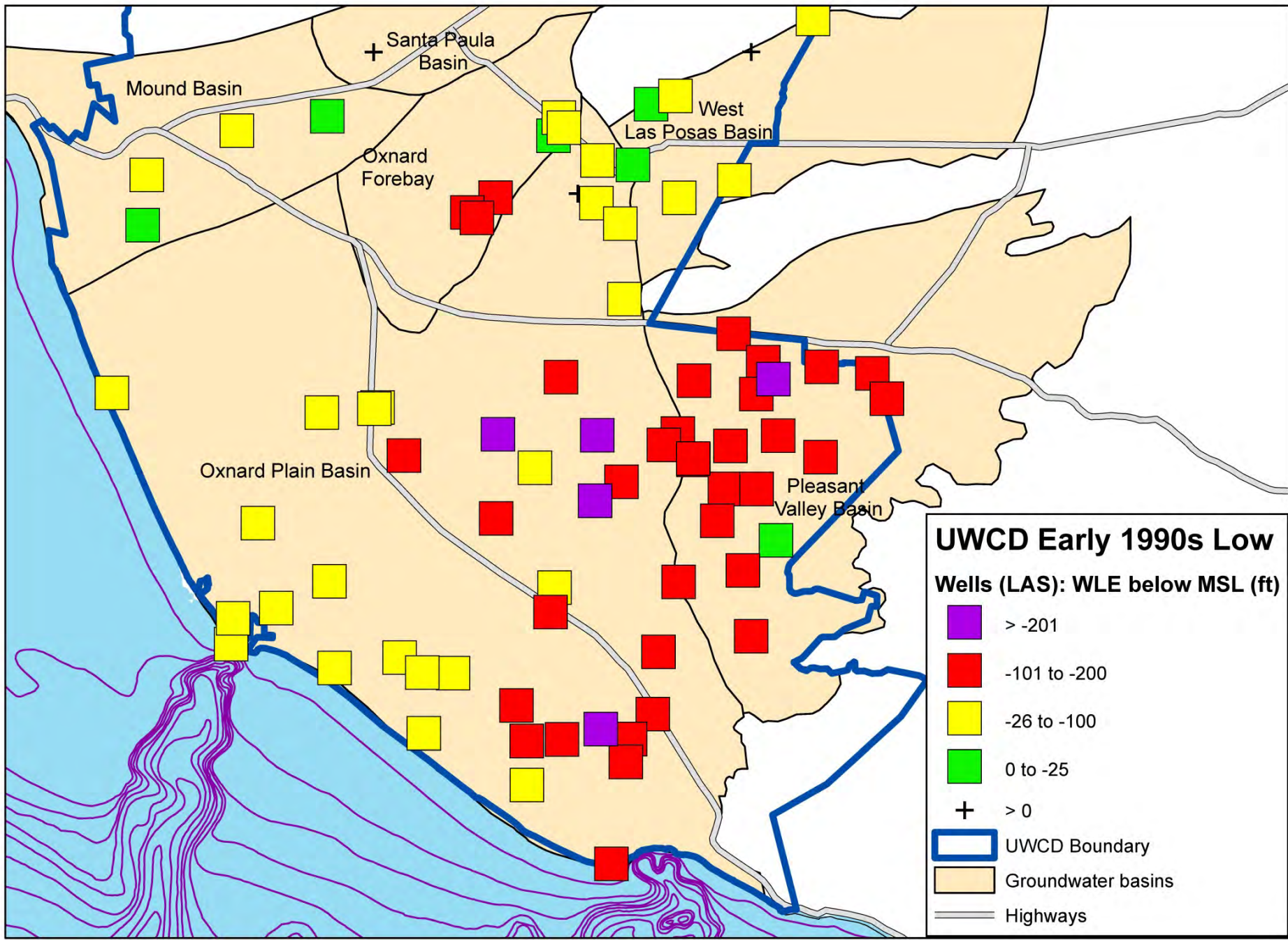
0 0.75 1.5 3 4.5 6 Miles











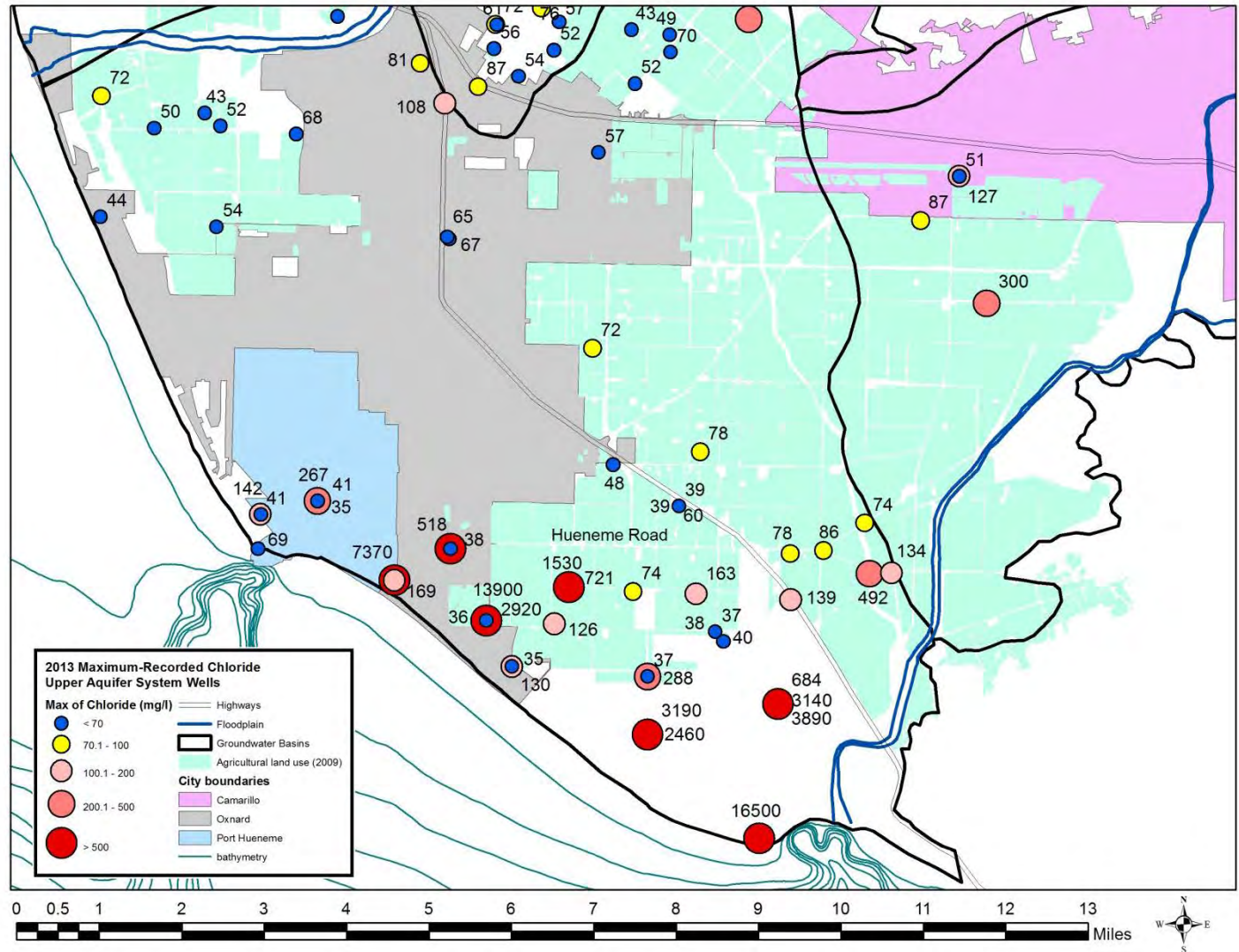
0 0.75 1.5 3 4.5 6 Miles





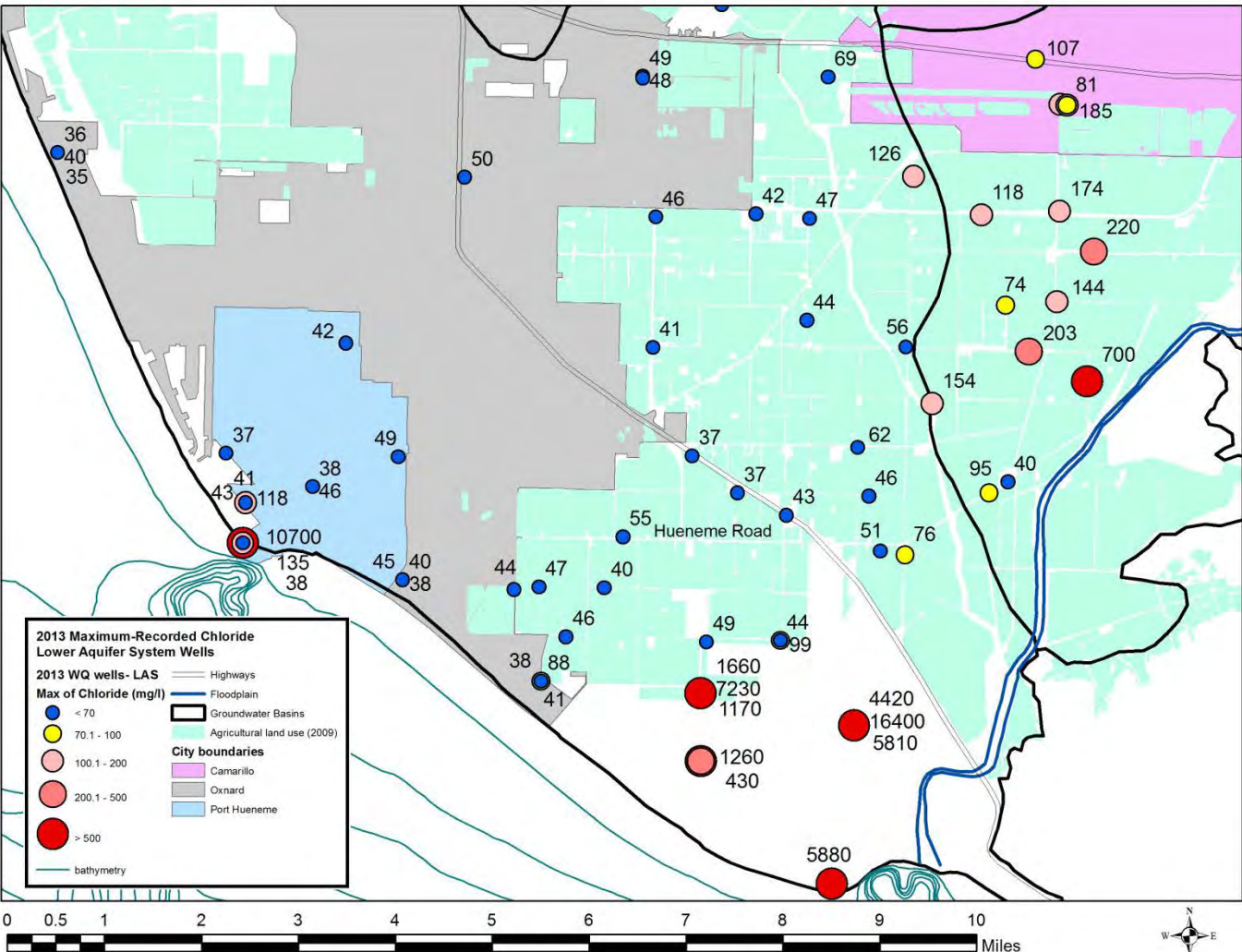
# SEA WATER INTRUSION MONITORING

**UAS  
2013  
Maximum  
Recorded  
Chloride  
Concentration,  
mg/L**

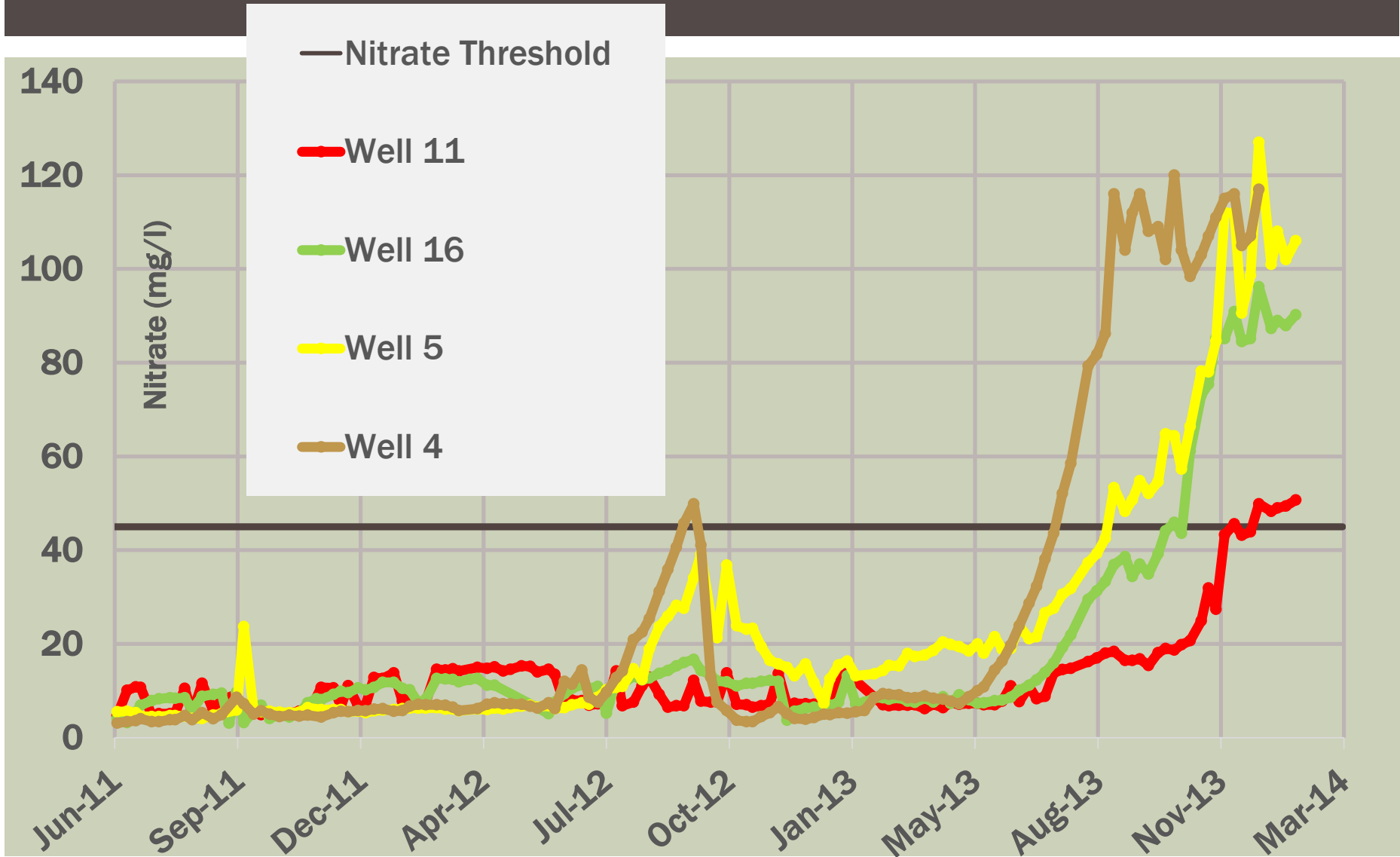


# SEA WATER INTRUSION MONITORING

**LAS  
2013  
Maximum  
Recorded  
Chloride  
Concentration,  
mg/L**



# EL RIO UAS WELLS – NITRATE LEVELS





# 01N21W07J02S\_PTP #1

Intake at -254 ft

Current PWL at -175 ft

Delta PWL & intake ~79 ft

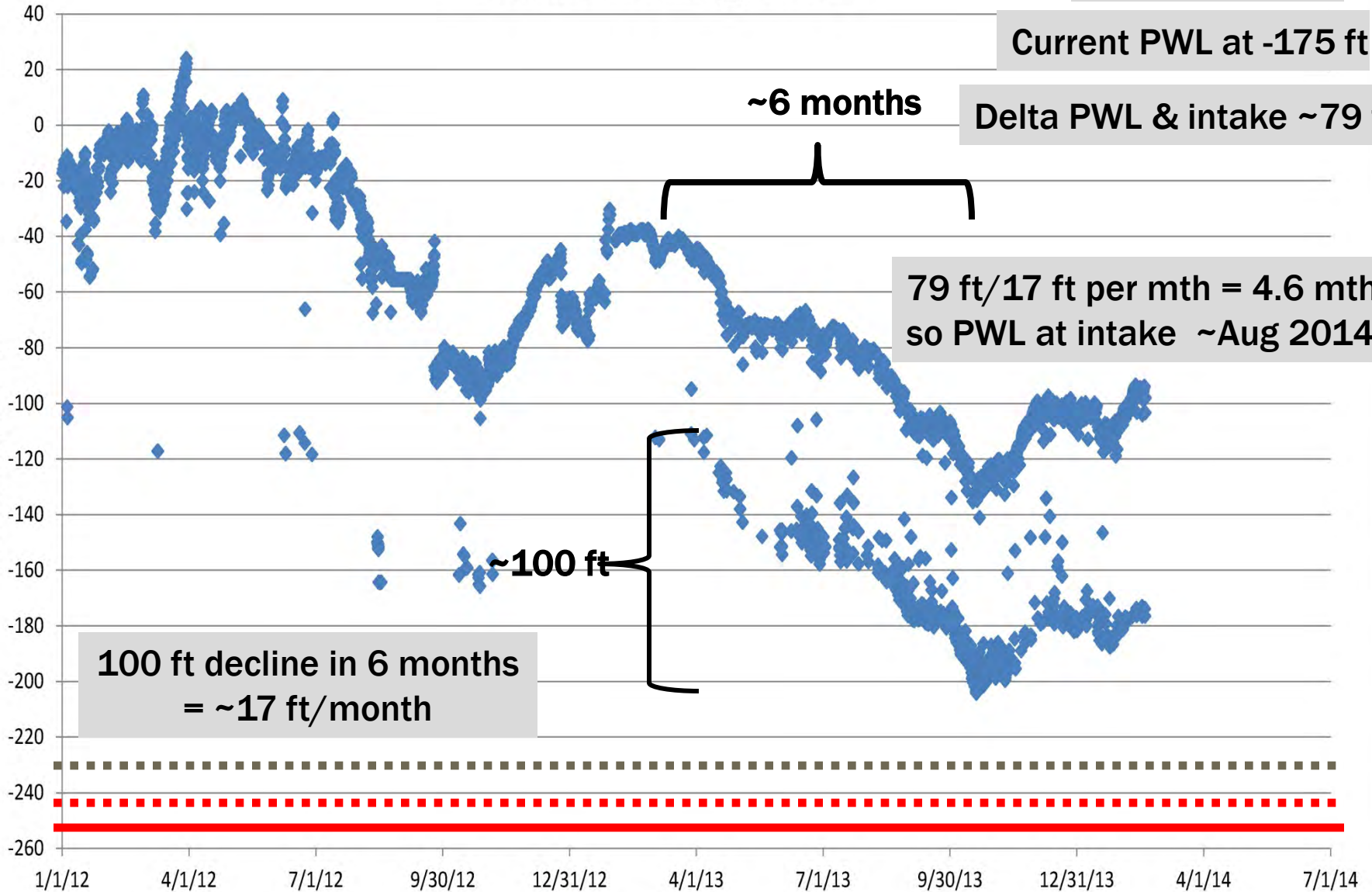
~6 months

$79 \text{ ft} / 17 \text{ ft per mth} = 4.6 \text{ mths}$   
so PWL at intake ~Aug 2014

~100 ft

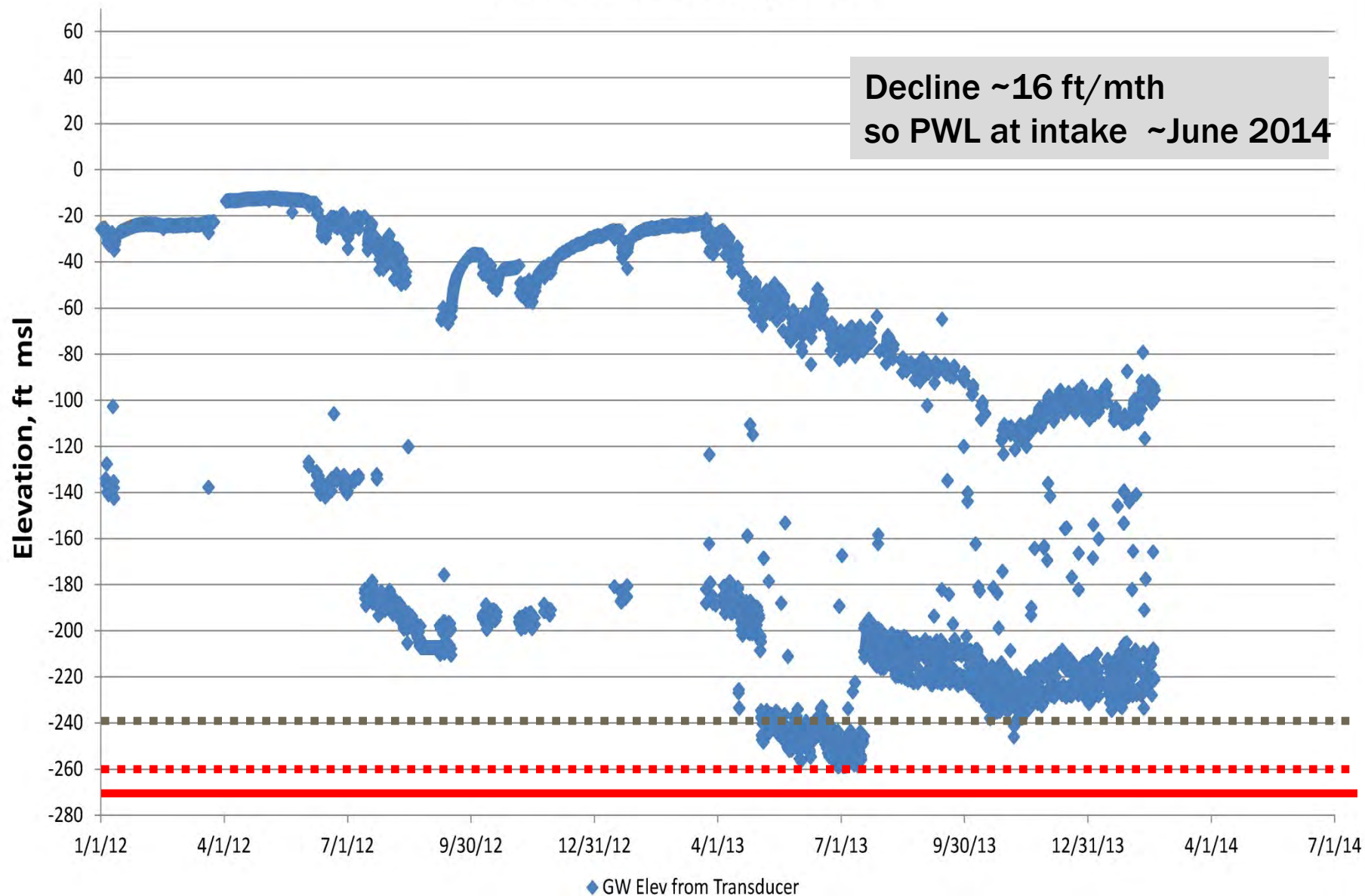
100 ft decline in 6 months  
= ~17 ft/month

Elevation, ft msl



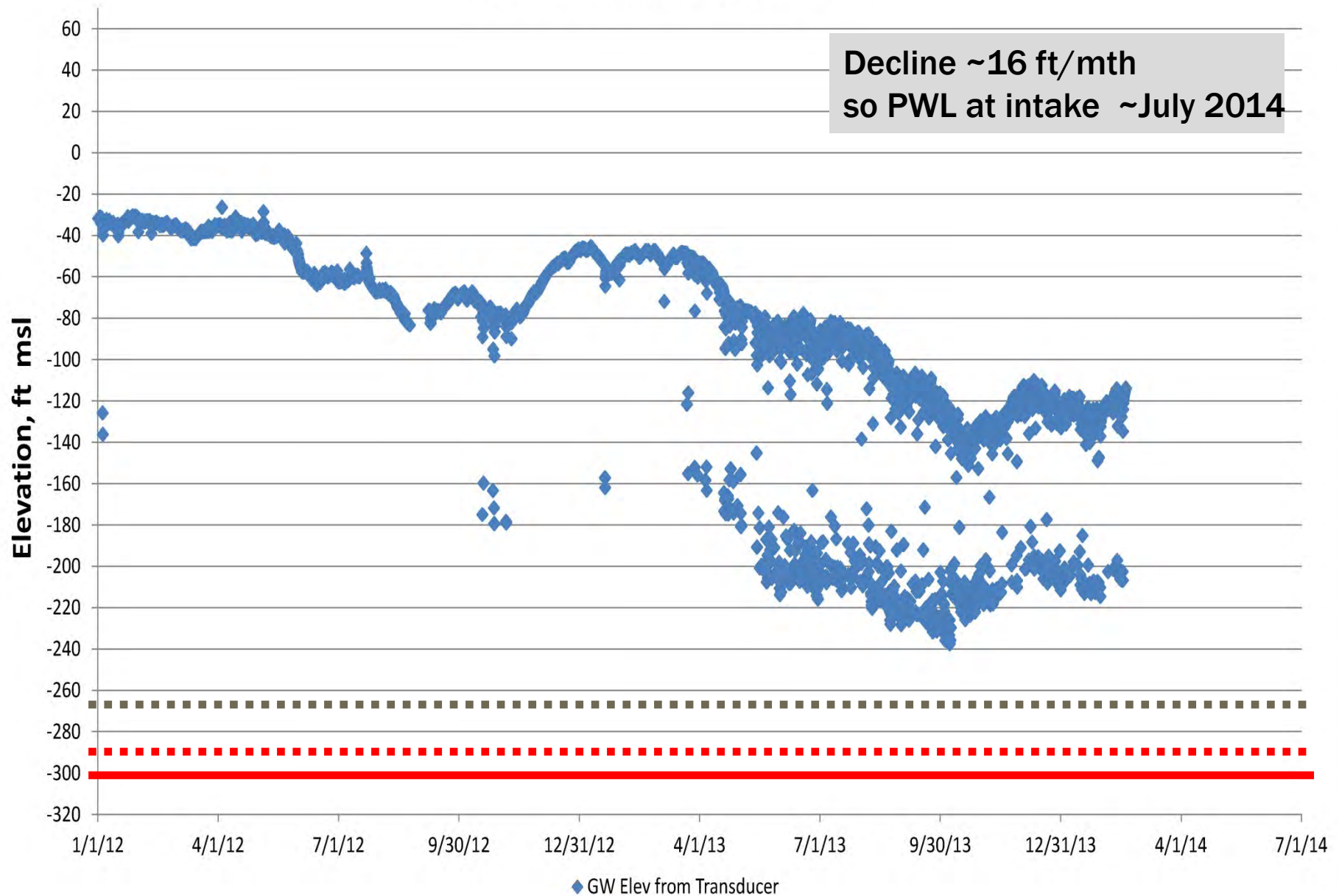
◆ GW Elev from Transducer

## 02N21W32E01S\_PTP #2

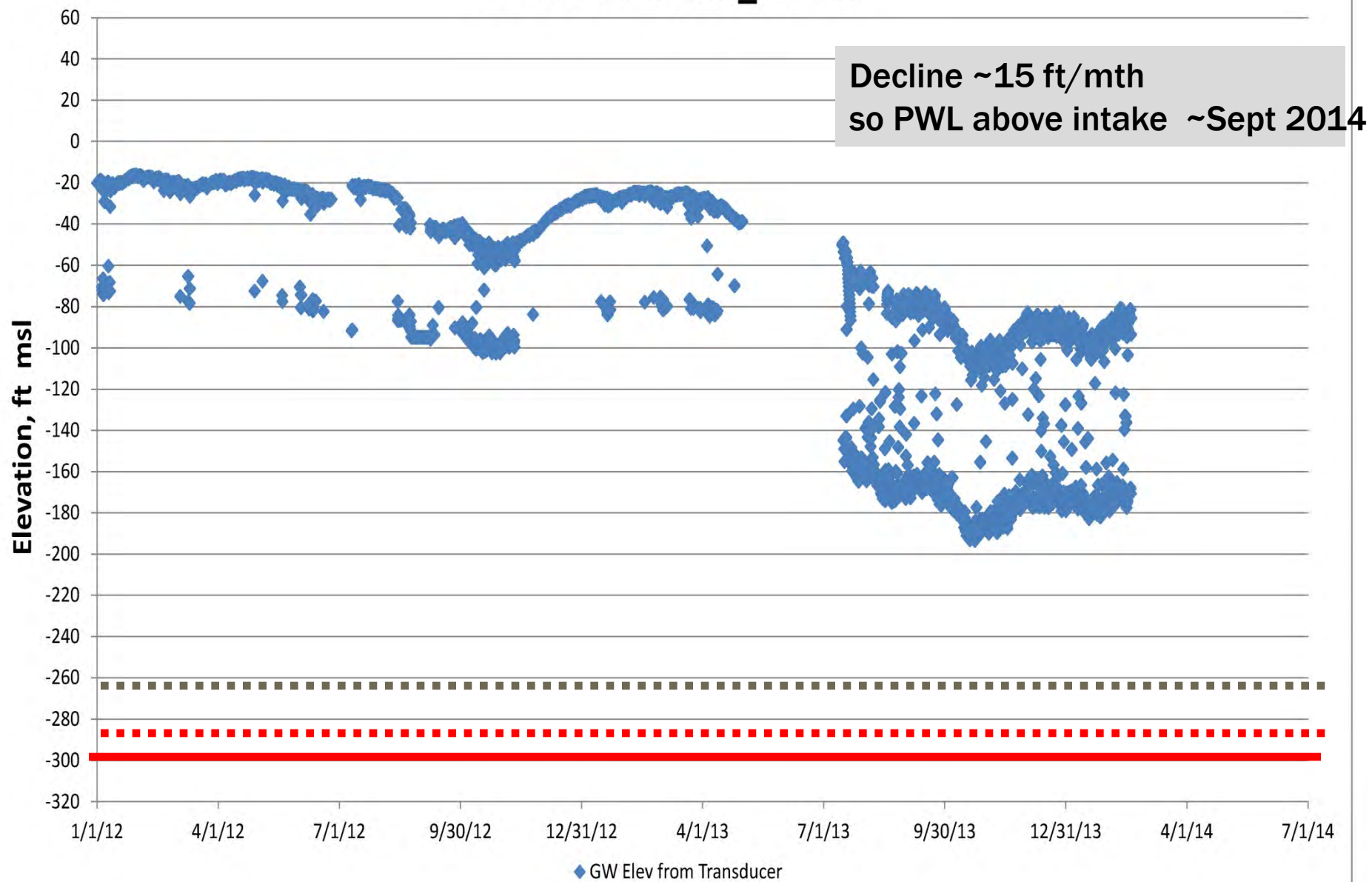




# 01N21W06J05S\_PTP #3

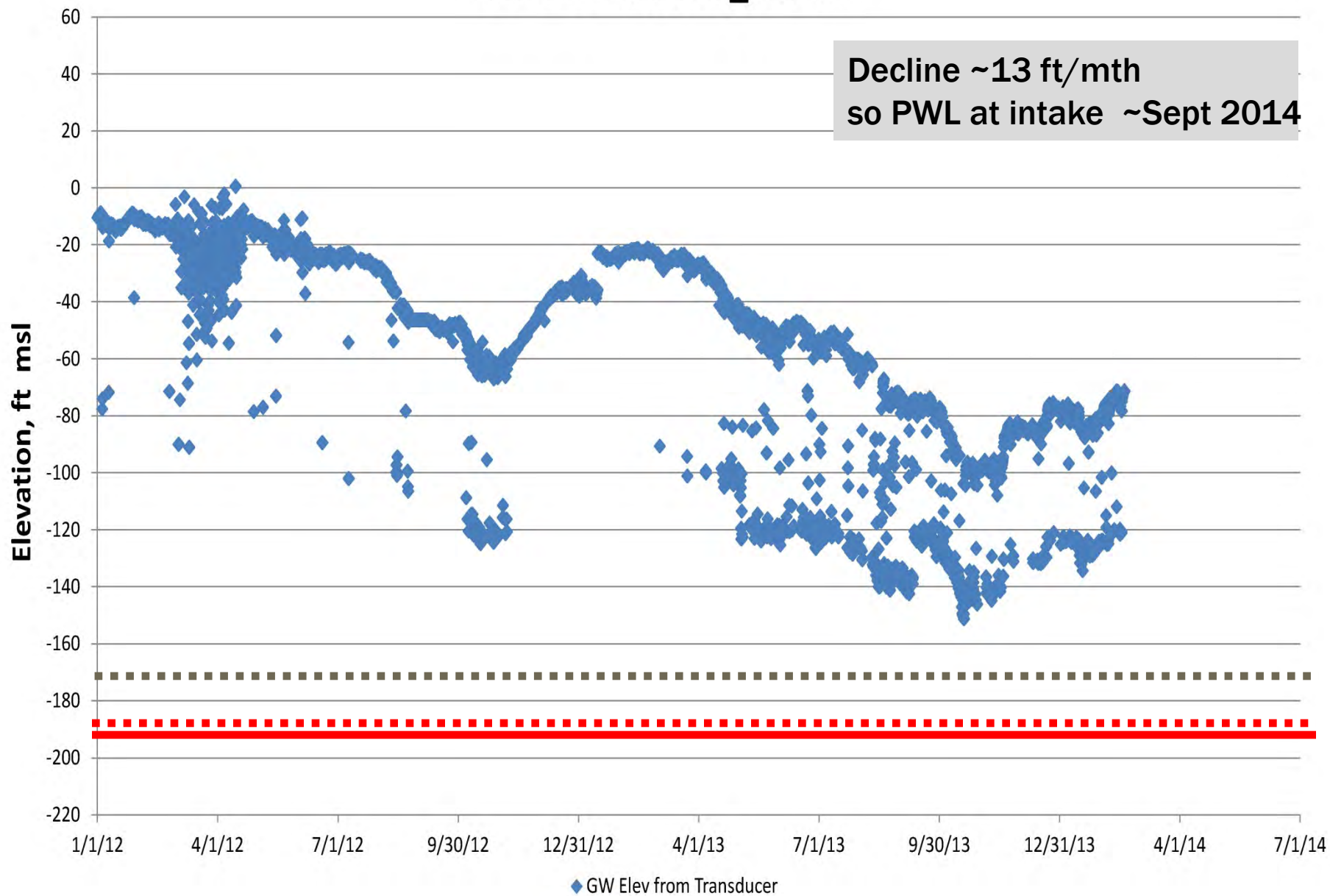


# 01N22W01M03S\_PTP #4



# 01N22W13D03S\_PTP #5

Decline ~13 ft/mth  
so PWL at intake ~Sept 2014





# At current rate of PWL decline on PTP System...

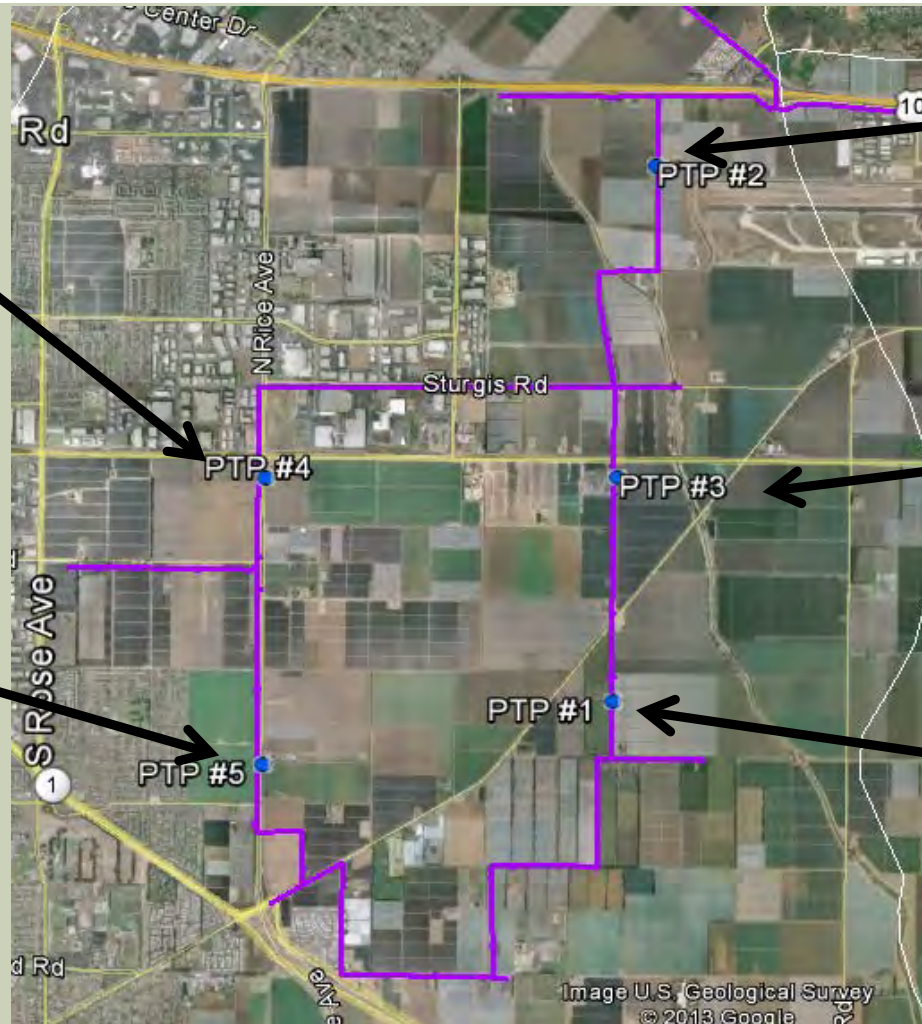
PWL **above**  
intake thru  
~Sept 2014

PWL  
below  
intake  
~June  
2014

PWL  
below  
intake  
~July  
2014

PWL below  
intake  
~Sept 2014

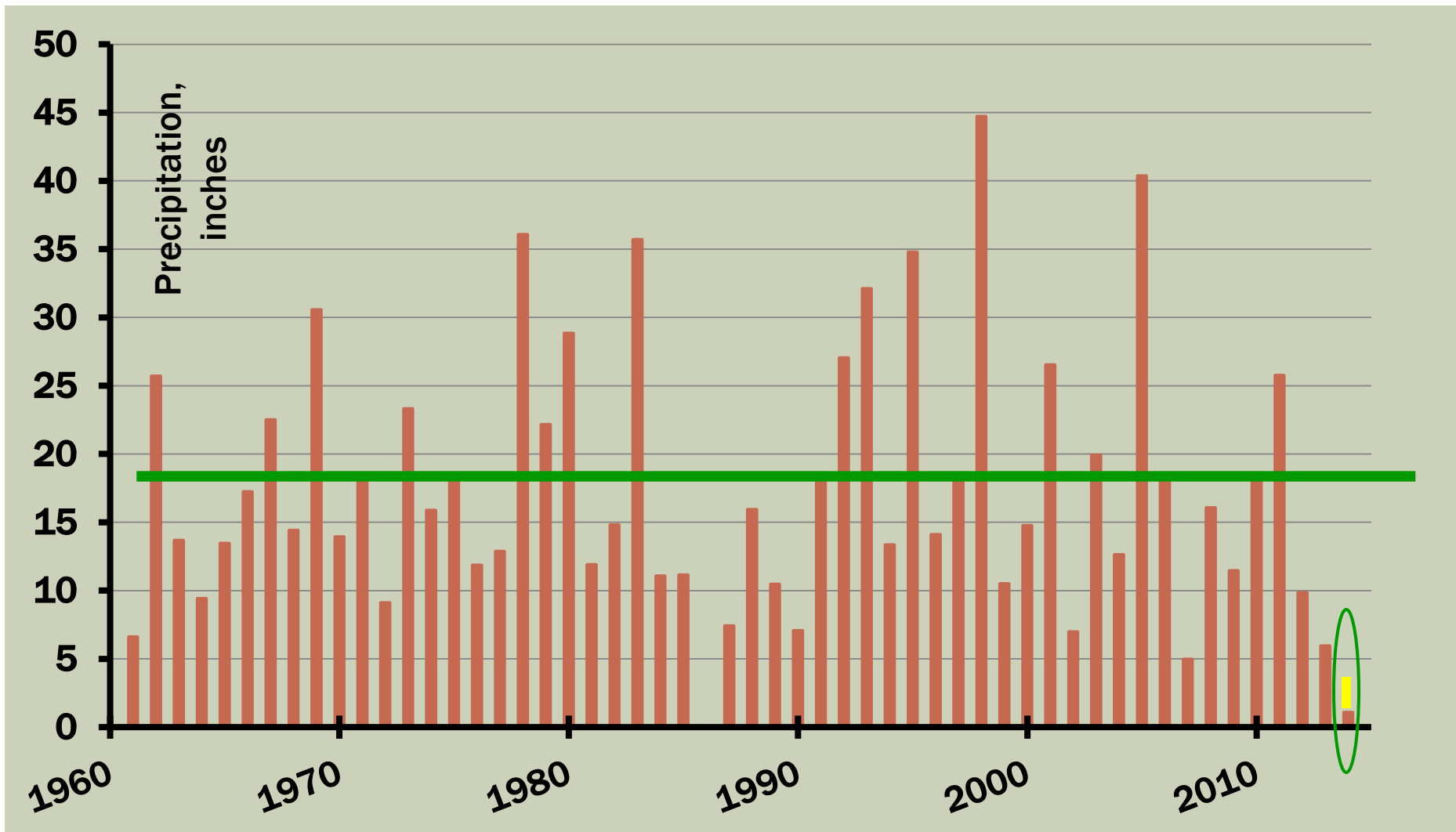
PWL  
below  
intake  
~Aug  
2014



# **SURFACE WATER PRIORITY**

- ✓ **El Rio spreading basins (health & safety issues – nitrates)**
- ✓ **Saticoy spreading basins (replenish aquifers)**
- ✓ **Pleasant Valley CWD**
- ✓ **PTP System**

# ANNUAL PRECIPITATION – SANTA PAULA





Wednesday, February 19, 2014 11:26:53 AM

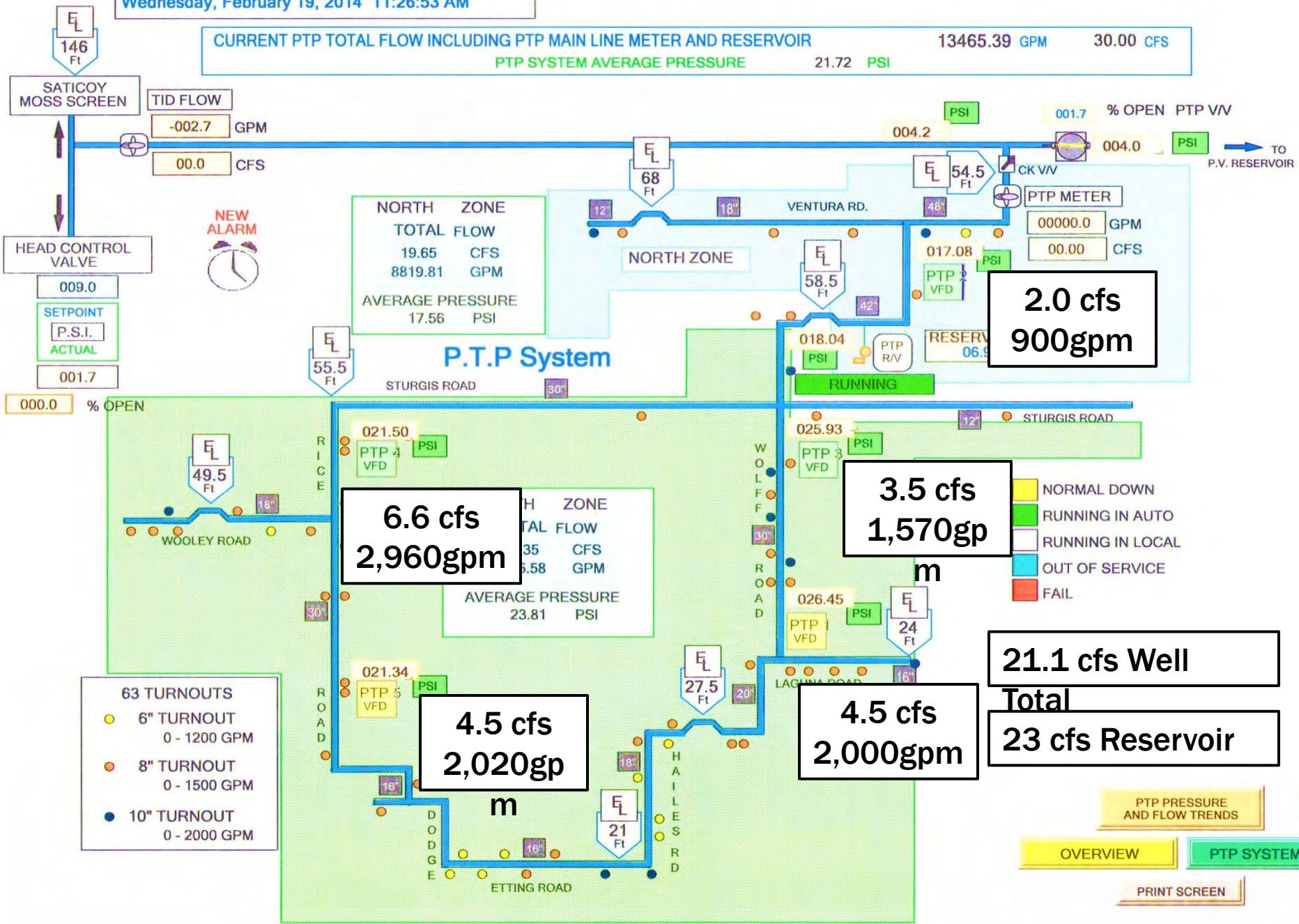
CURRENT PTP TOTAL FLOW INCLUDING PTP MAIN LINE METER AND RESERVOIR

13465.39 GPM

30.00 CFS

PTP SYSTEM AVERAGE PRESSURE

21.72 PSI



**NORTH ZONE**  
TOTAL FLOW  
19.65 CFS  
8819.81 GPM  
AVERAGE PRESSURE  
17.56 PSI

**P.T.P. System**

**TH ZONE**  
TOTAL FLOW  
35 CFS  
5.58 GPM  
AVERAGE PRESSURE  
23.81 PSI

**2.0 cfs  
900gpm**

**3.5 cfs  
1,570gp**

**21.1 cfs Well  
Total  
23 cfs Reservoir**

**4.5 cfs  
2,020gp**

**4.5 cfs  
2,000gpm**

- 63 TURNOUTS**
- 6" TURNOUT  
0 - 1200 GPM
  - 8" TURNOUT  
0 - 1500 GPM
  - 10" TURNOUT  
0 - 2000 GPM

- NORMAL DOWN
- RUNNING IN AUTO
- RUNNING IN LOCAL
- OUT OF SERVICE
- FAIL