



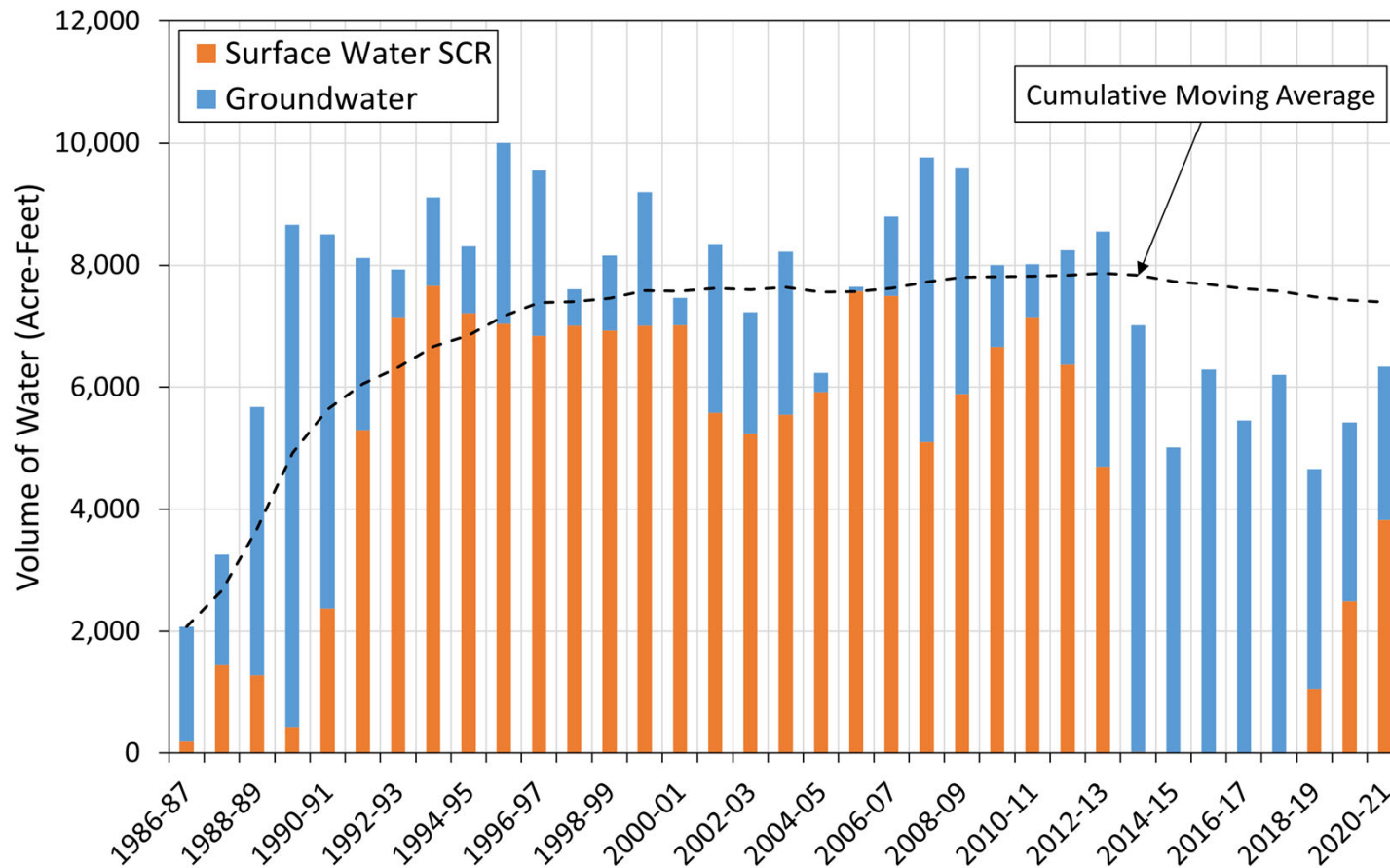
United Water
CONSERVATION DISTRICT

Recycled Water Connection

Laguna Road Pipeline Project


Michel Kadah, PE Engineer
Ph: 805 695-3709
michelk@unitedwater.org

Pumping Trough Pipeline (PTP)



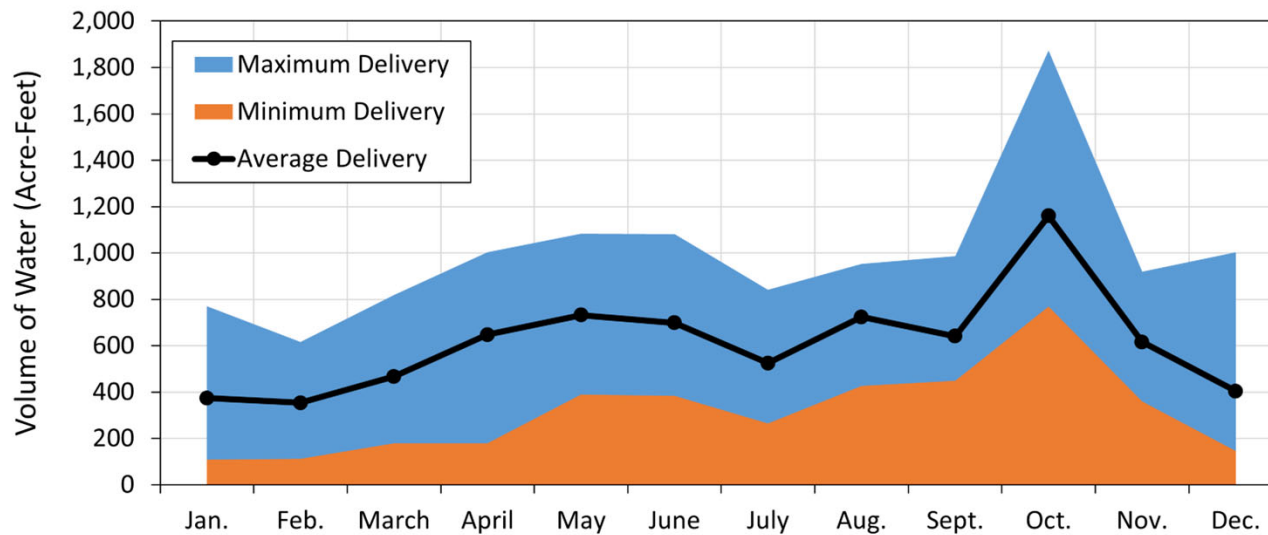
Water Supply Sources:
1986 – 2021

Water year:
October 1 –
September 30



System

Data WY
2001 2021

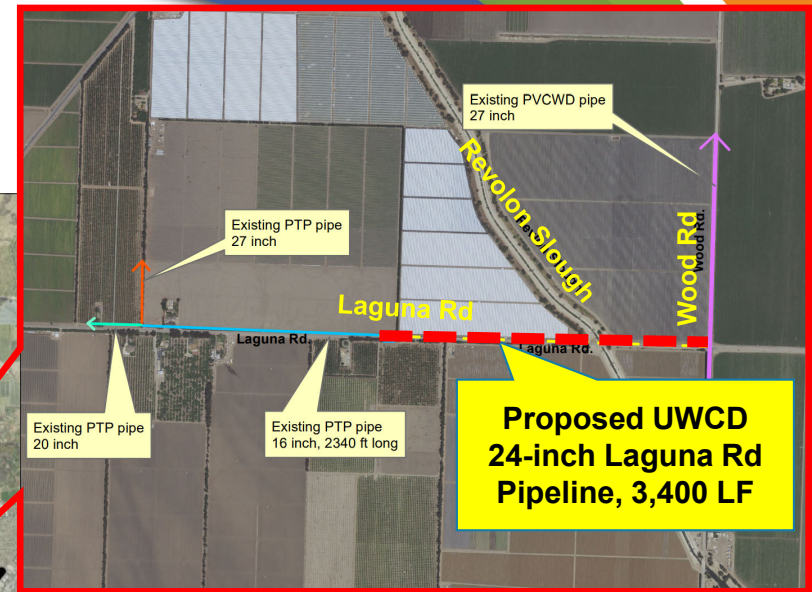
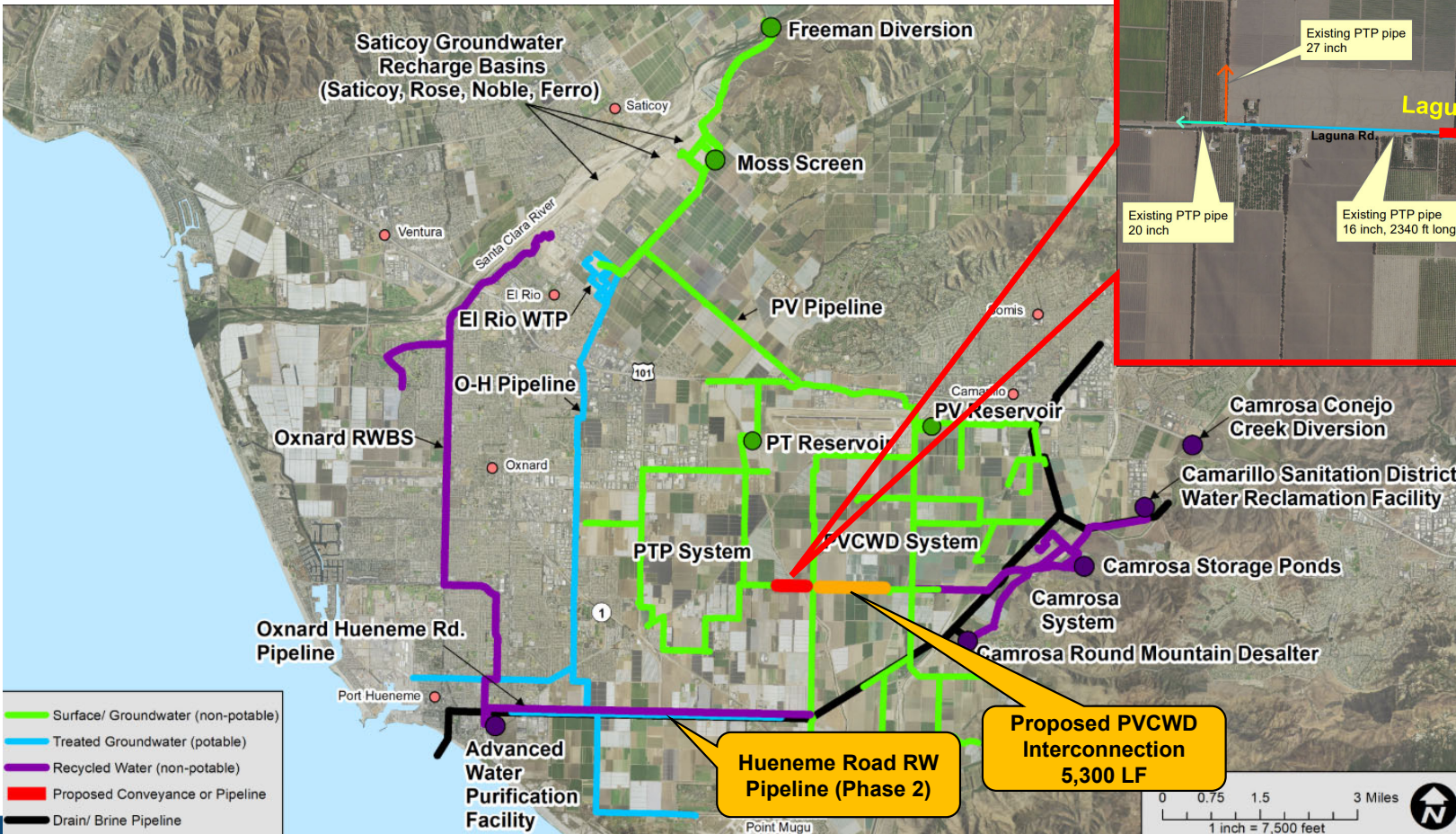


Data WY 2001-2021

**Typical Peak Harvest Seasons
for Ventura County's Top Food Crops (VC Farm Bureau)**

Crop	Jan.	Feb.	March	April	May	June	July	Aug.	Sept.	Oct.	Nov.	Dec.	
Strawberries													
Lemons													
Celery													
Tomatoes													
Avocadoes													
Raspberries													
Peppers													
Valencia oranges													

Project Objective



Grant Funding

Estimated Project Cost

- ◆ \$4.7 million

USDA Natural Resources Conservation Service (NRCS):

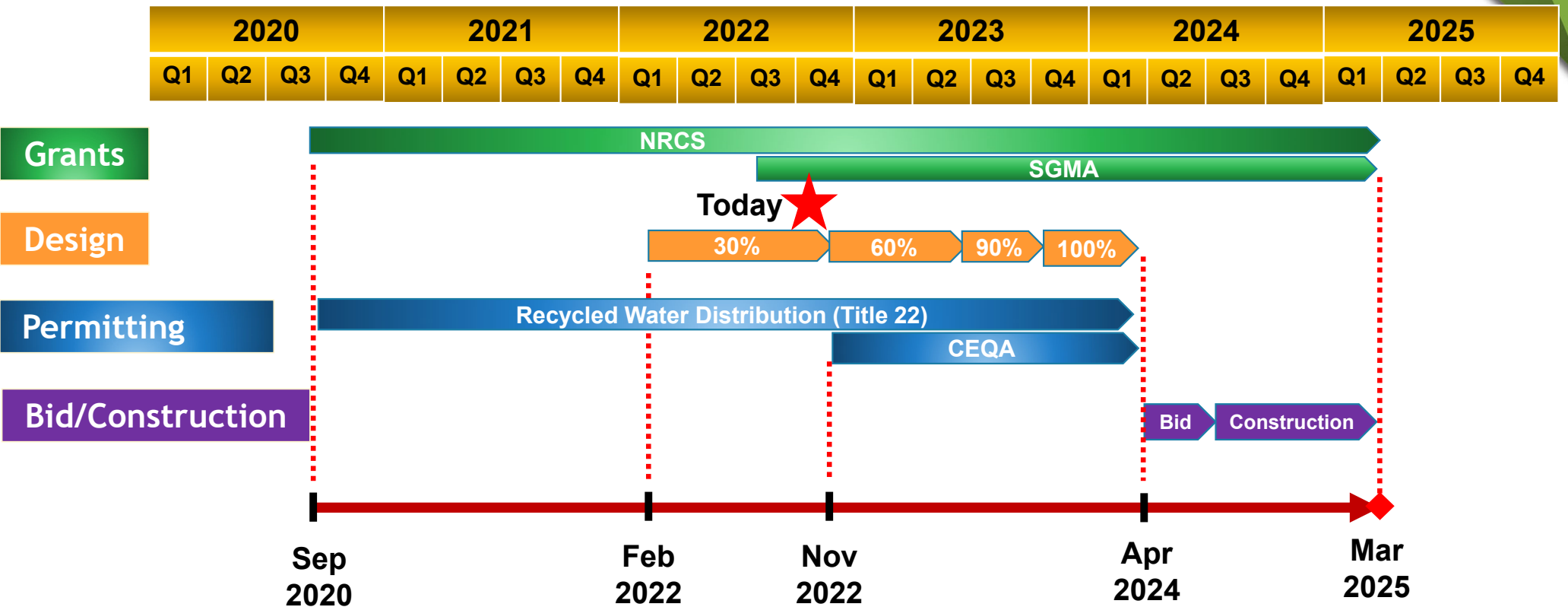
- ◆ \$343,422 approved on September 4, 2020

Sustainable Groundwater Management (SGM) Grant Program:

- ◆ \$2,651,500 on September 14, 2022



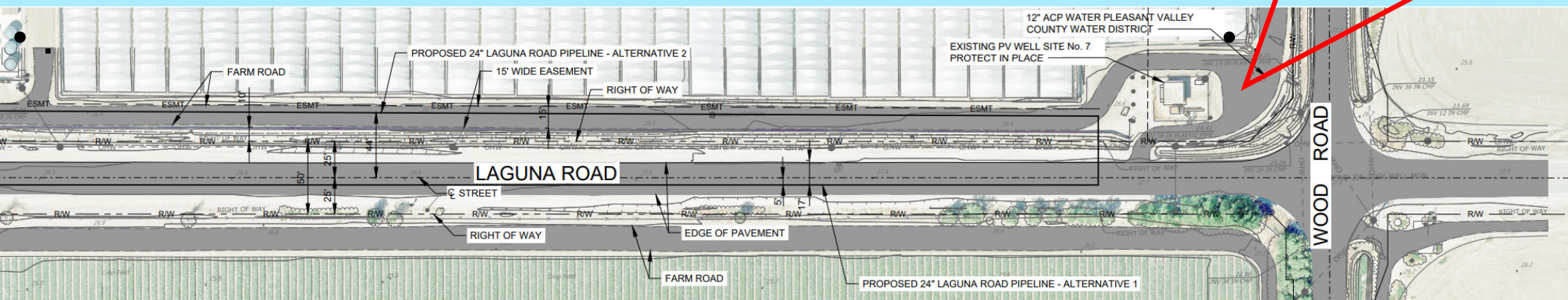
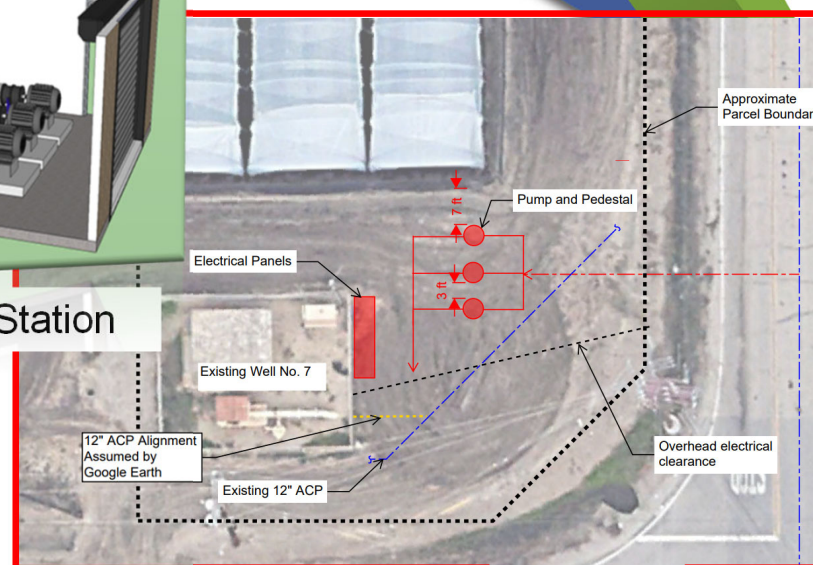
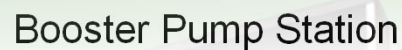
Project Timeline



Pvcwd Coordination Hydraulic Modeling

- # Preliminary Design Report

- Geotechnical report
- Trenchless crossing of Revolon Slough



Field Investigation

