



Optimizing Use of Our Growing Water Portfolio

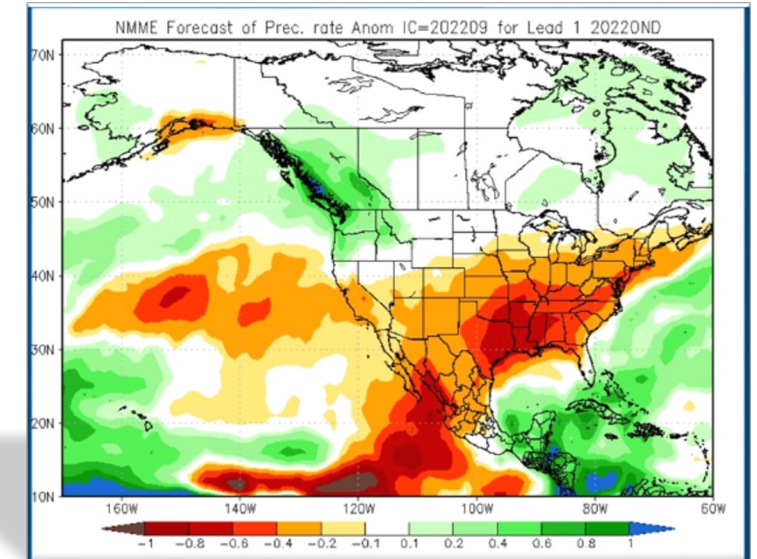
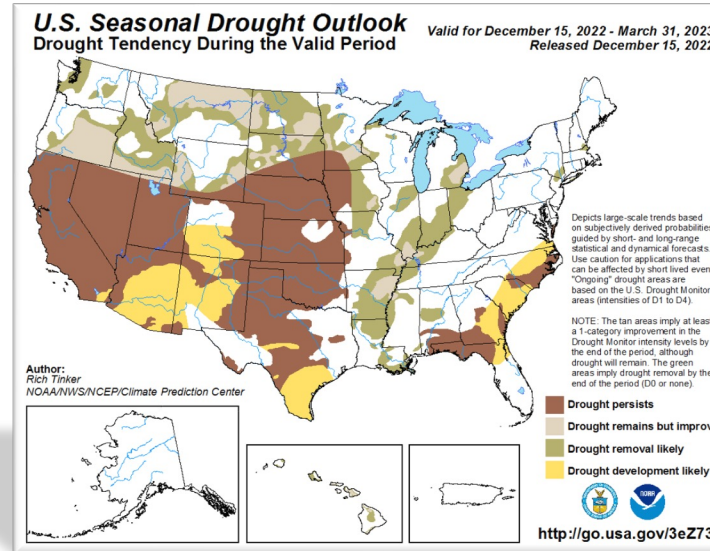
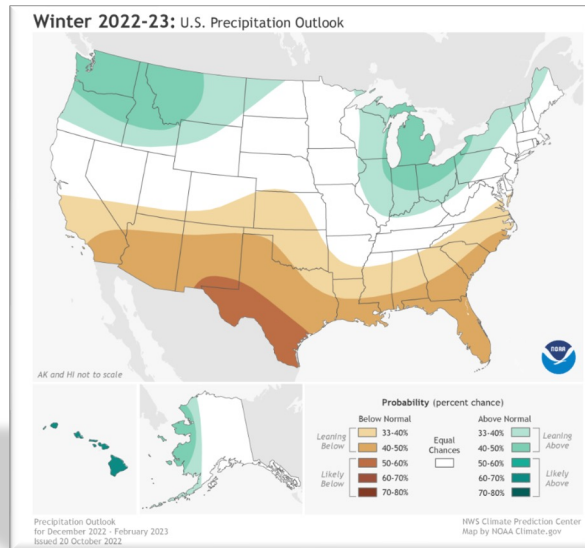
Increasing State Water Imports, Capturing Record Storm Flows,
and Innovations in Recharge

October 26, 2023

Bram Sercu, Ph.D., *Senior Hydrologist*

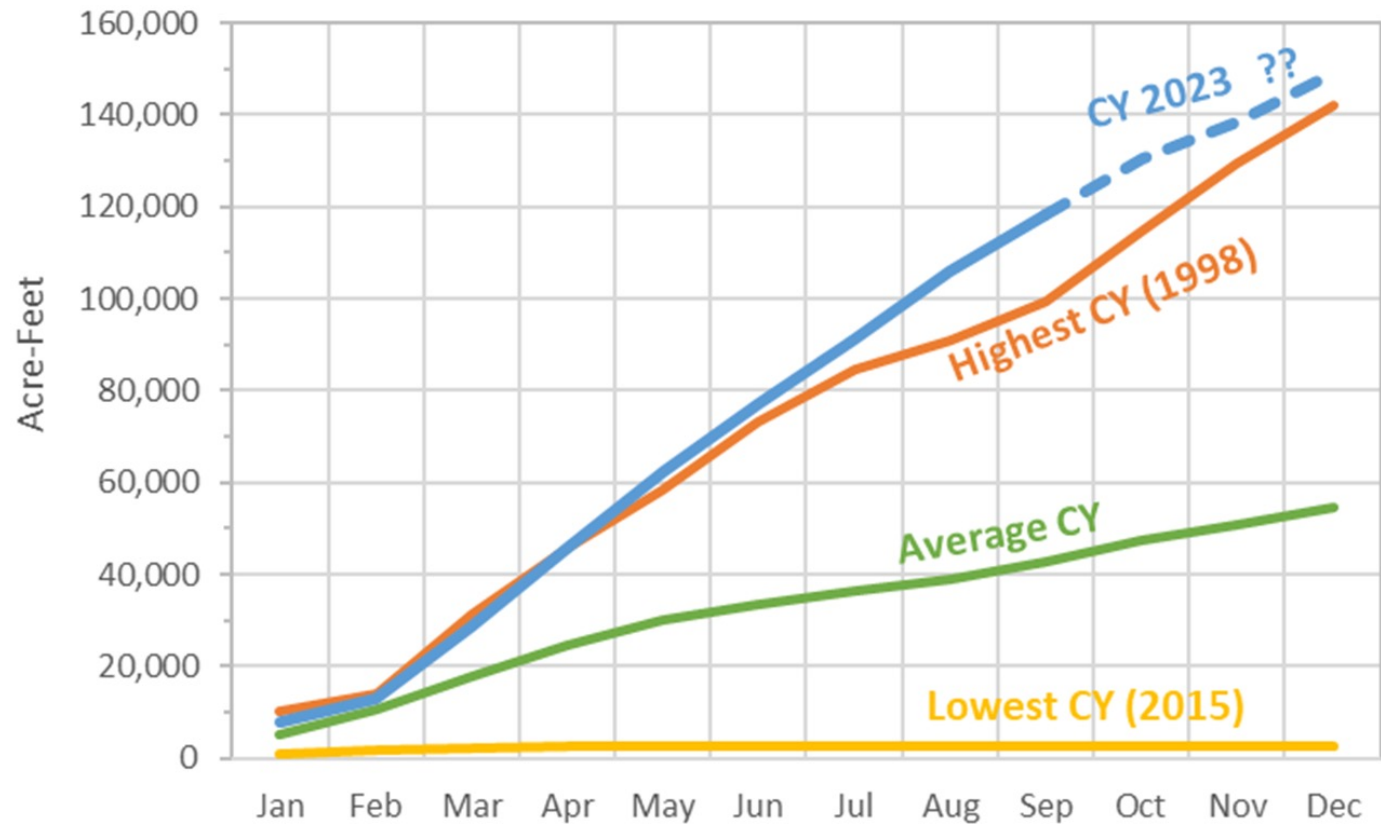
November 2022 Weather Forecasts

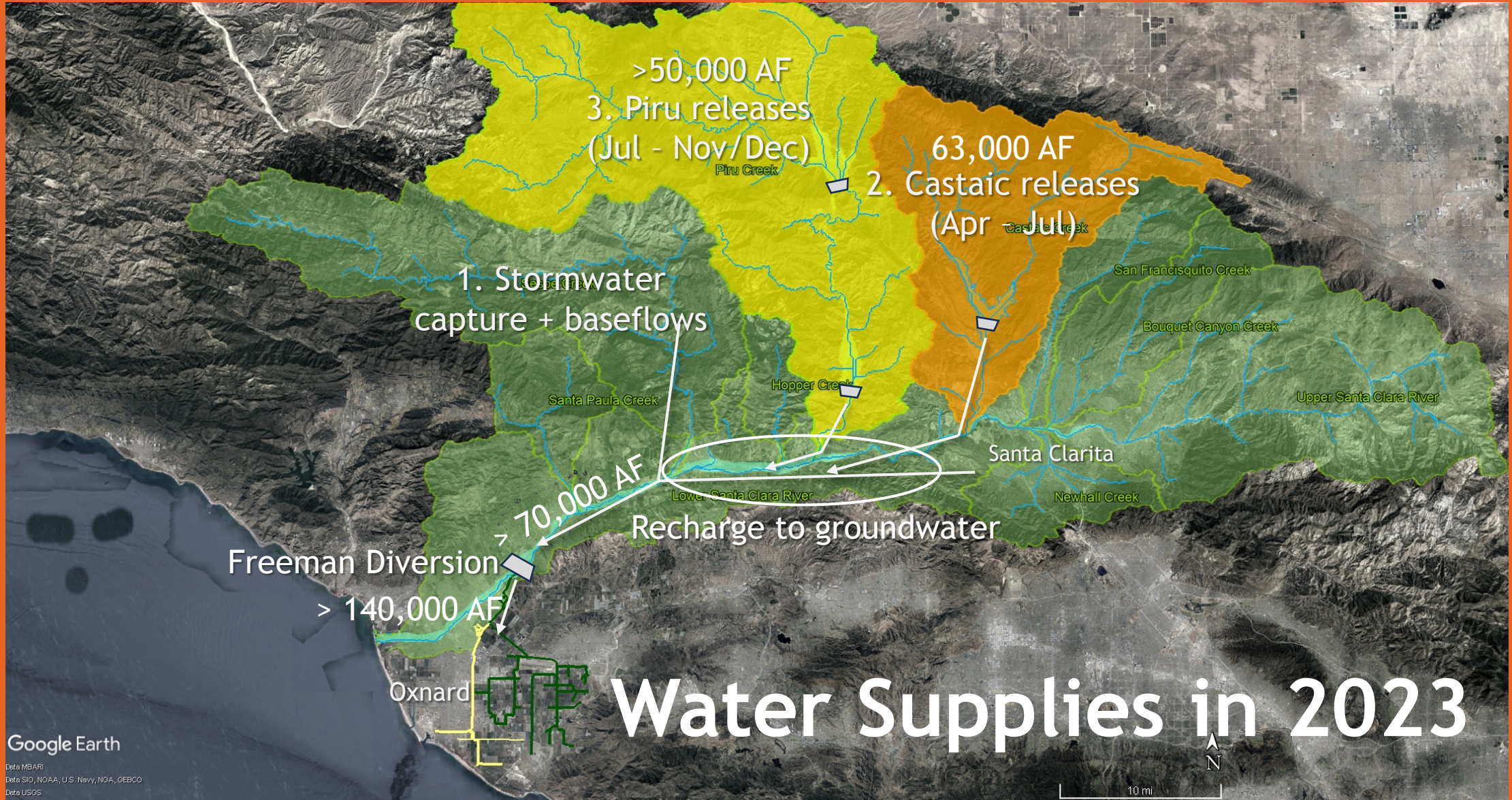
The latest U.S. winter outlook spells trouble for dry California



California should expect a 'fourth dry year' as drought persists

On Track for Record Diversions in 2023



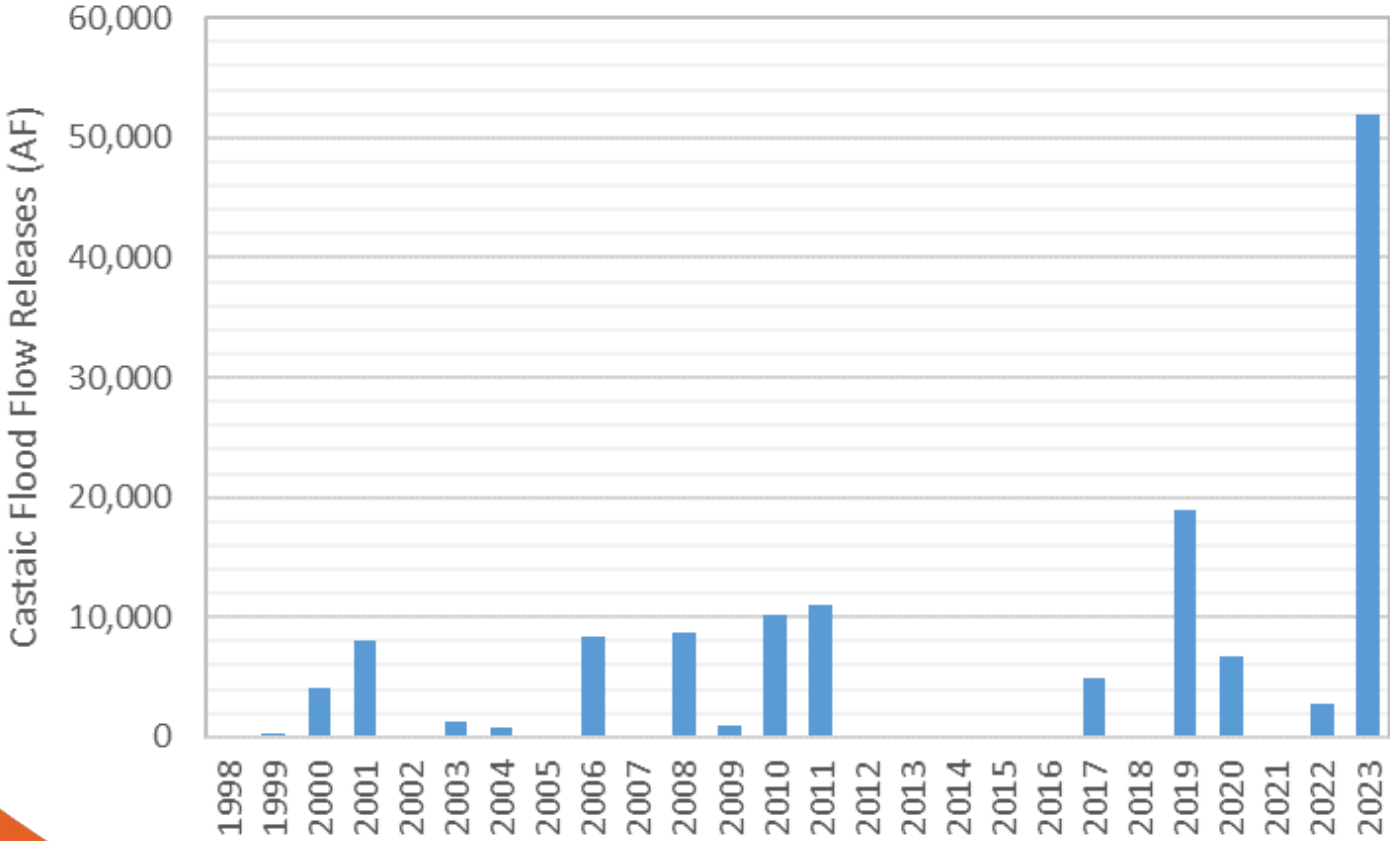


Water Supplies in 2023

Google Earth

Data MBARI
 Data SIO, NOAA, U.S. Navy, NGA, GEBCO
 Data USGS

Castaic Releases



2023 Castaic Releases

- Flood Flows 59,253 AF
- Gov. Ex. Order 2,000 AF
- Art. 21 2,079 AF

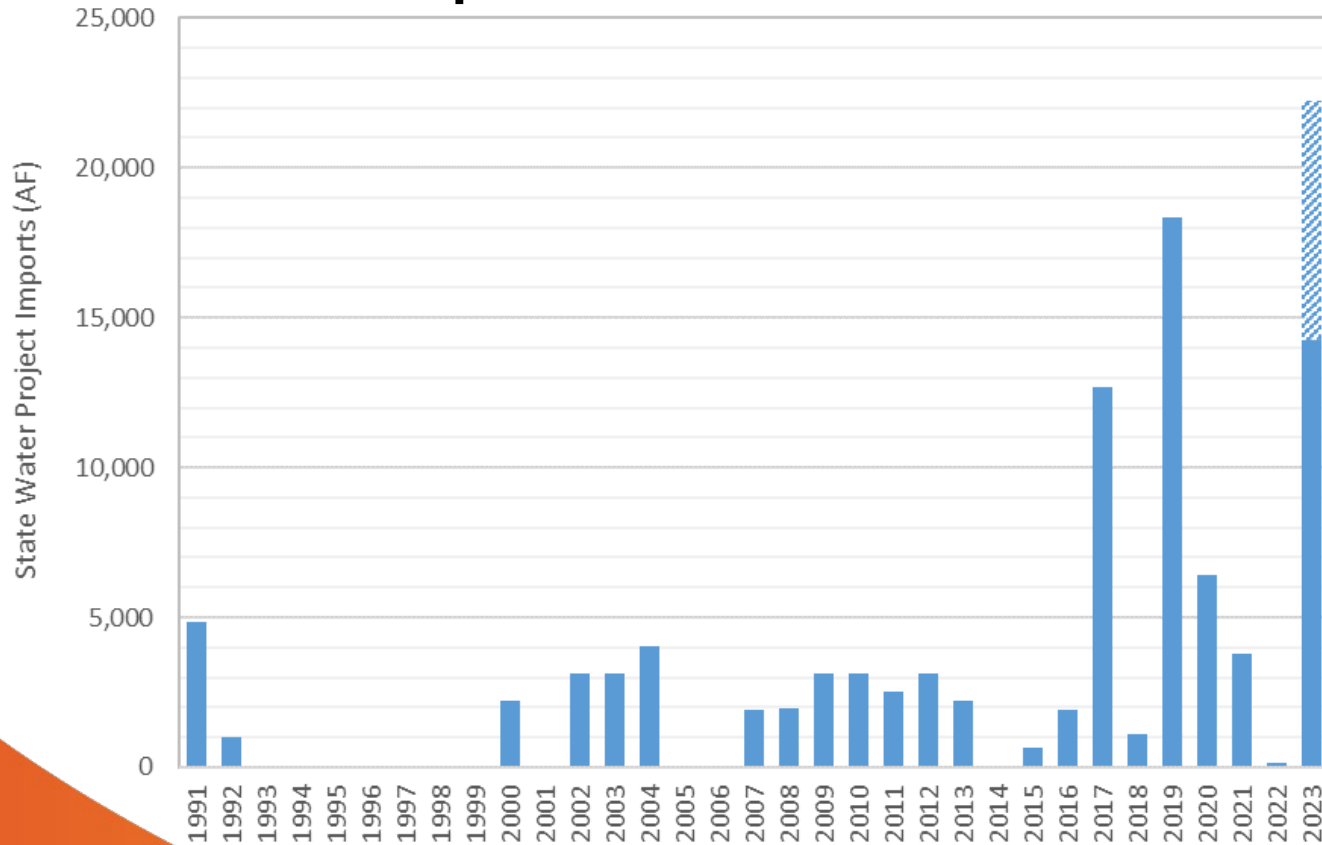


CALIFORNIA DEPARTMENT OF
WATER RESOURCES



State Water Project Deliveries

UWCD imports of State Water



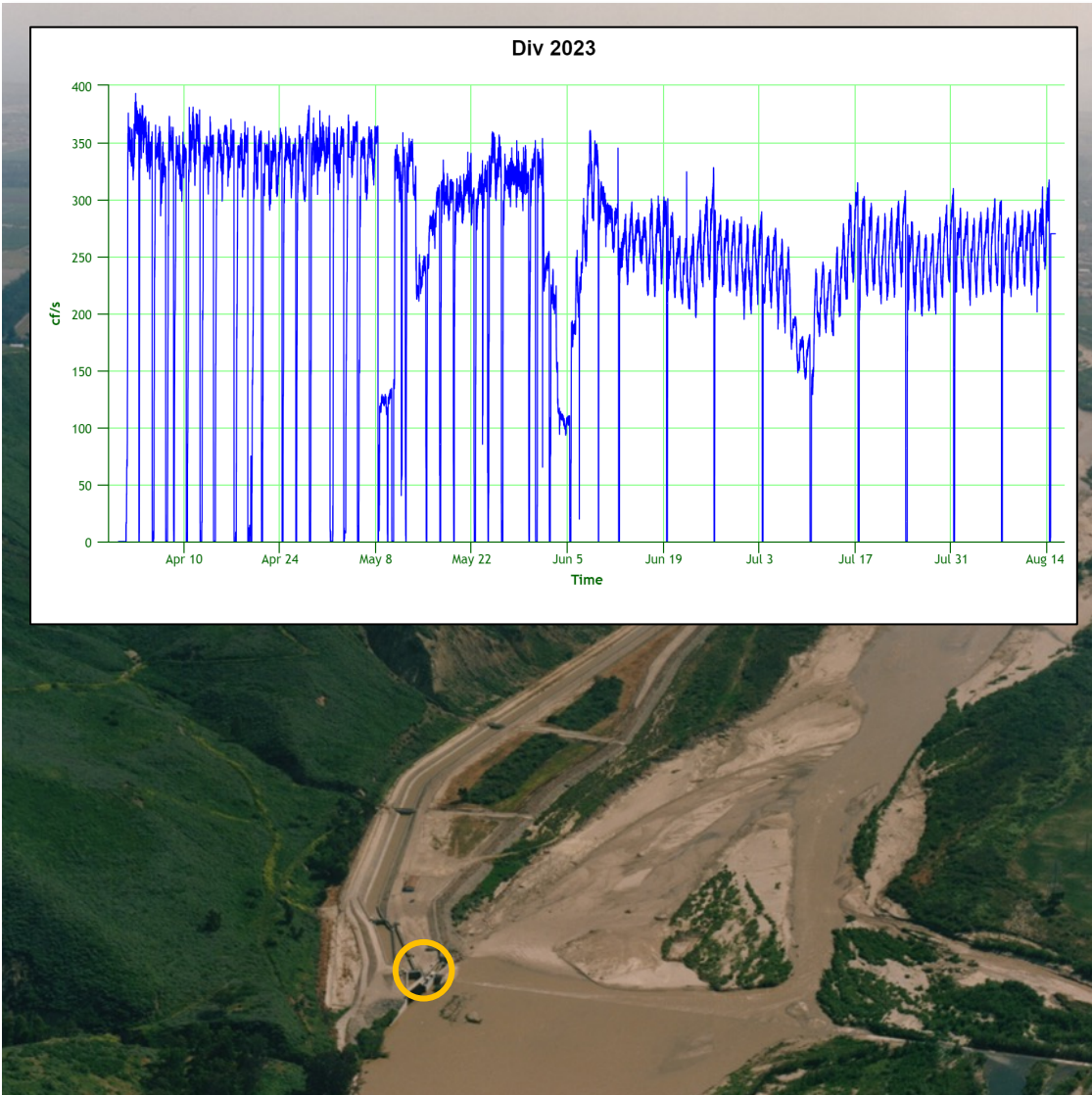
2023 SWP Imports

- UWCD Table A 3,150 AF
- CMWD Transfer 5,000 AF
- PWD Transfer 2,000 AF
- SCVWA Transfer 2,000 - 10,000 AF
- Article 21 (Castaic) 2,079 AF

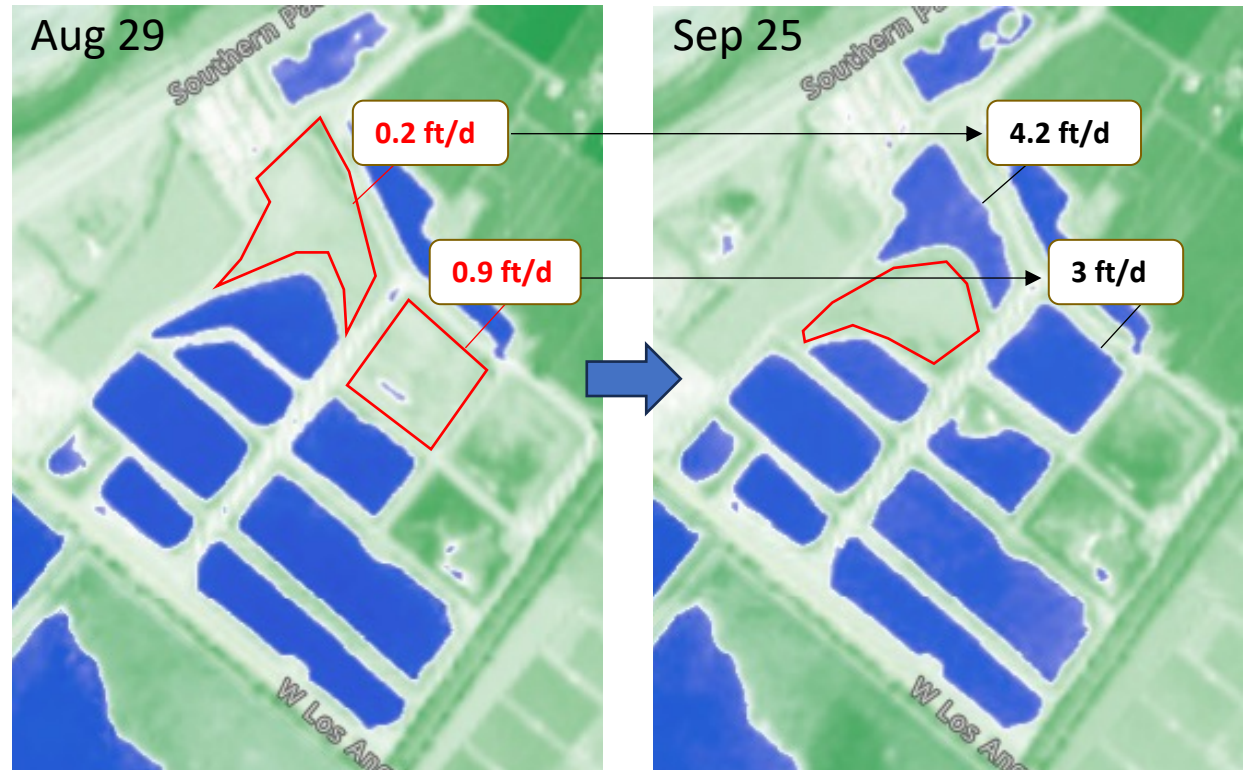
Strategies to Maximize Diversions



1. Sediment Management

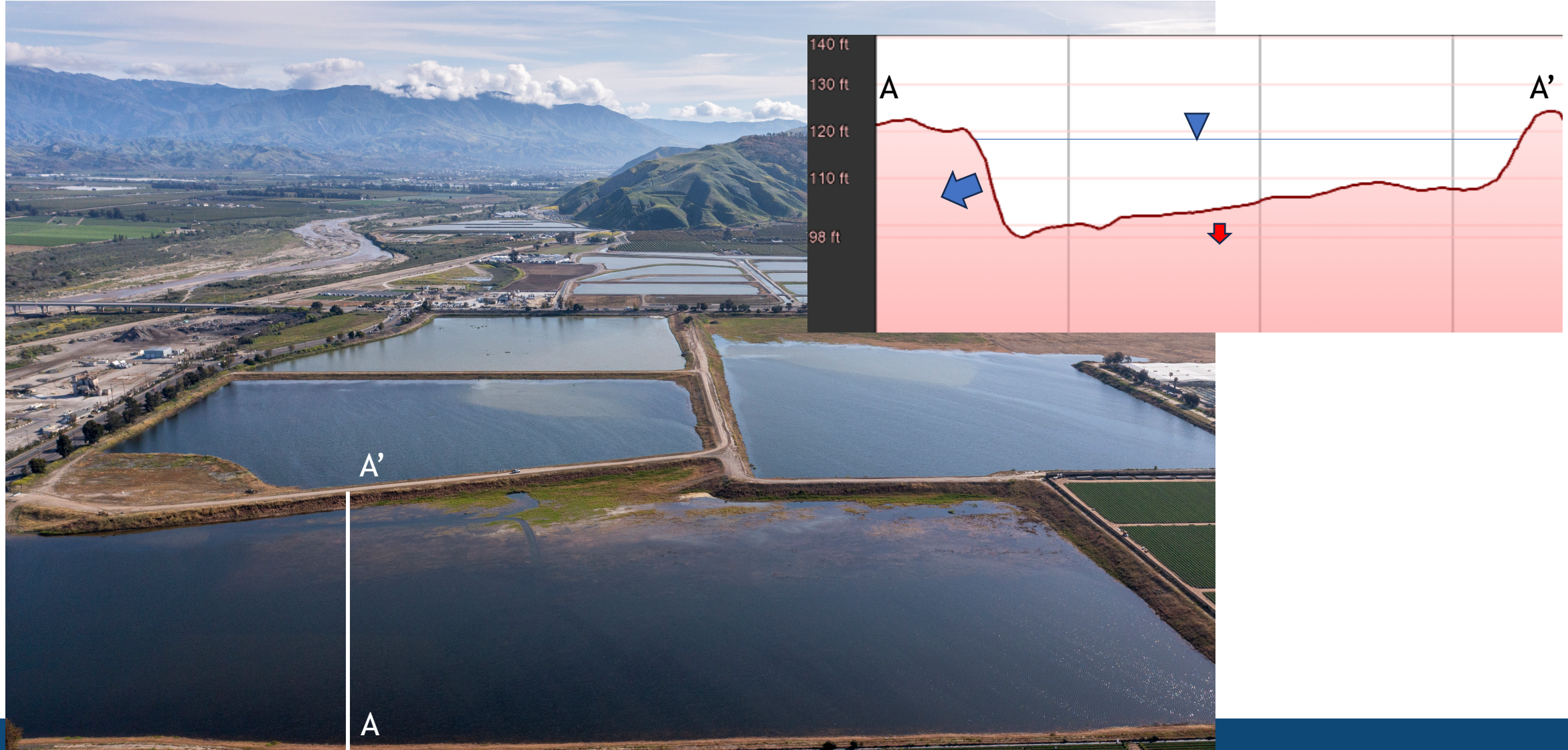


2. Saticoy Recharge Basin Rotations



Data: Sentinel-2 NDWI

3. Noble/Rose Basins Recharge



4. El Rio Recharge Basin Rehabilitation

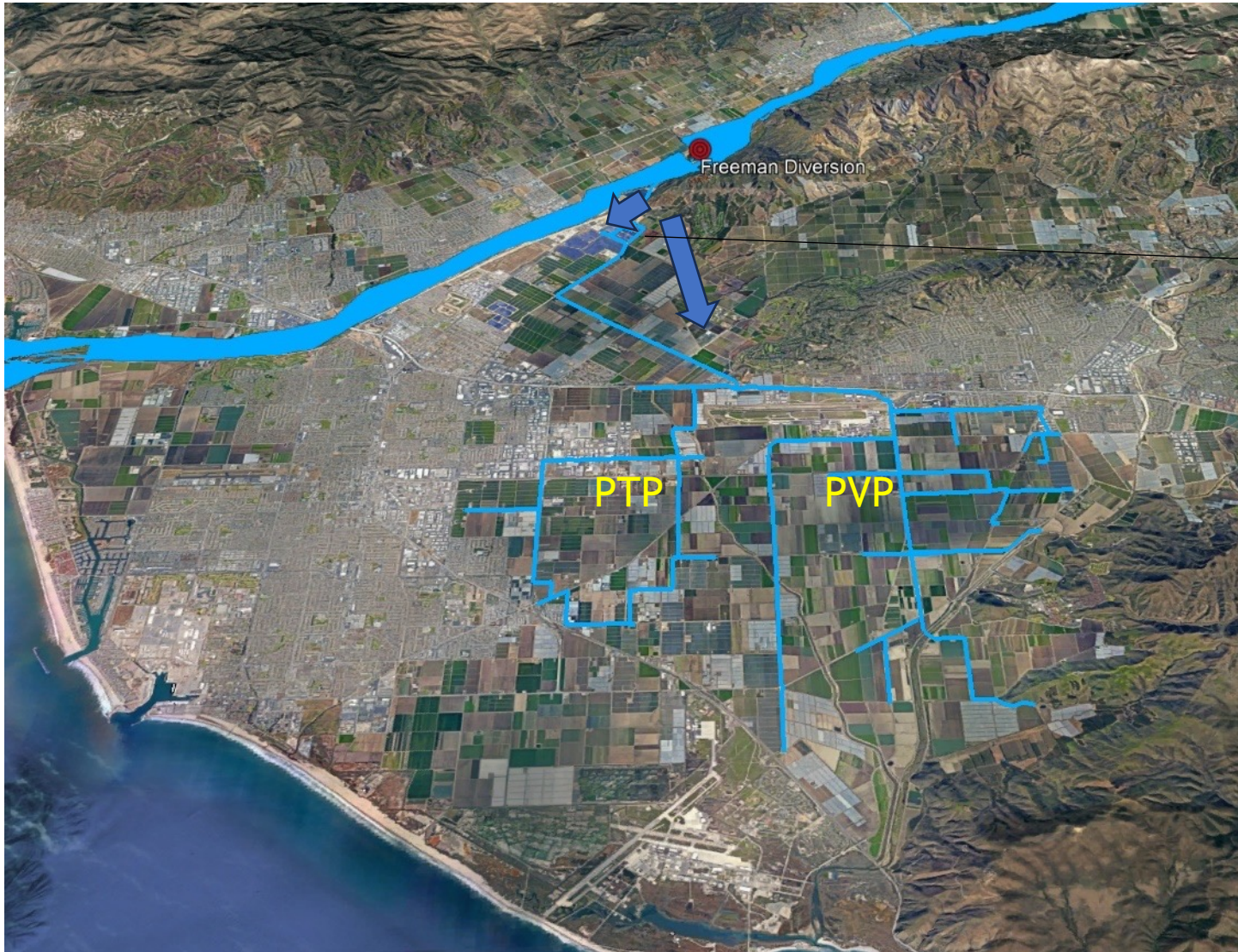
No recharge through bottom



Remove top 5" of fines



5. Maximize Surface Water Deliveries

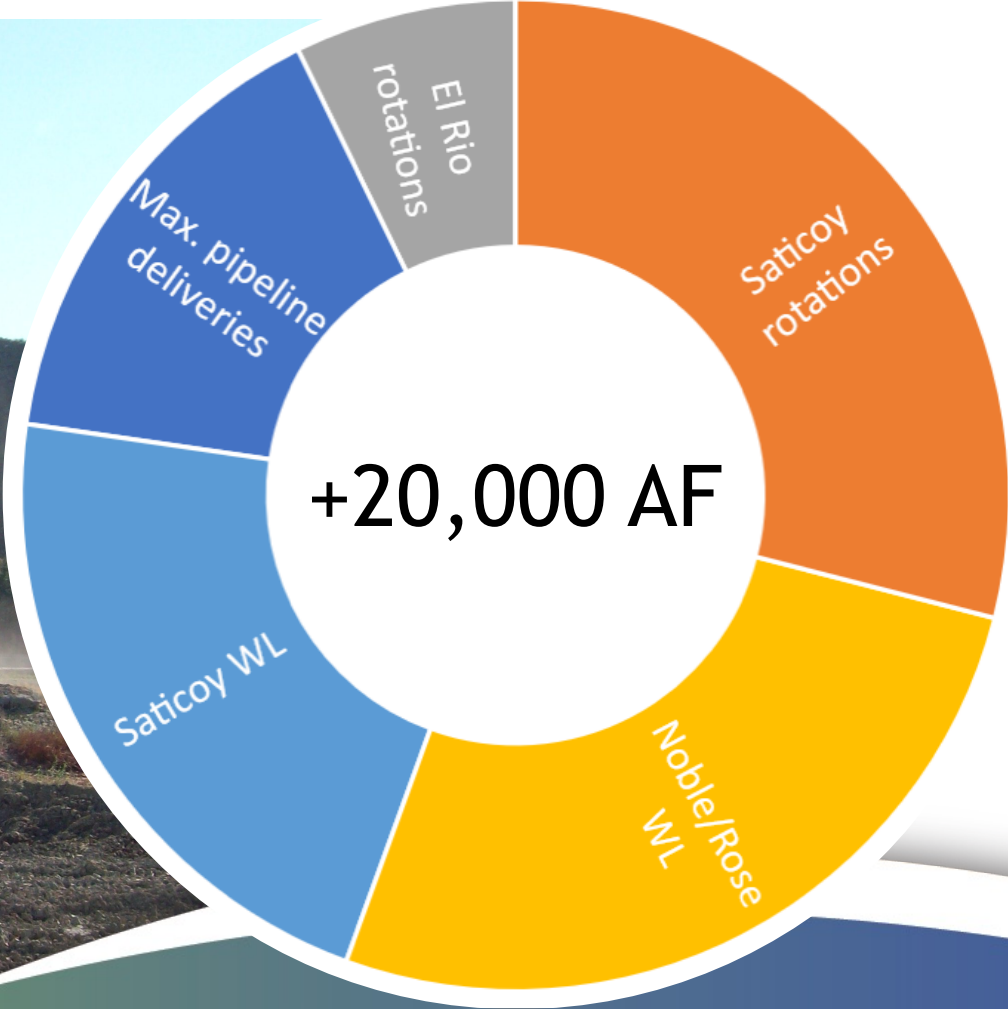


Increase operating head
at pipe inlet

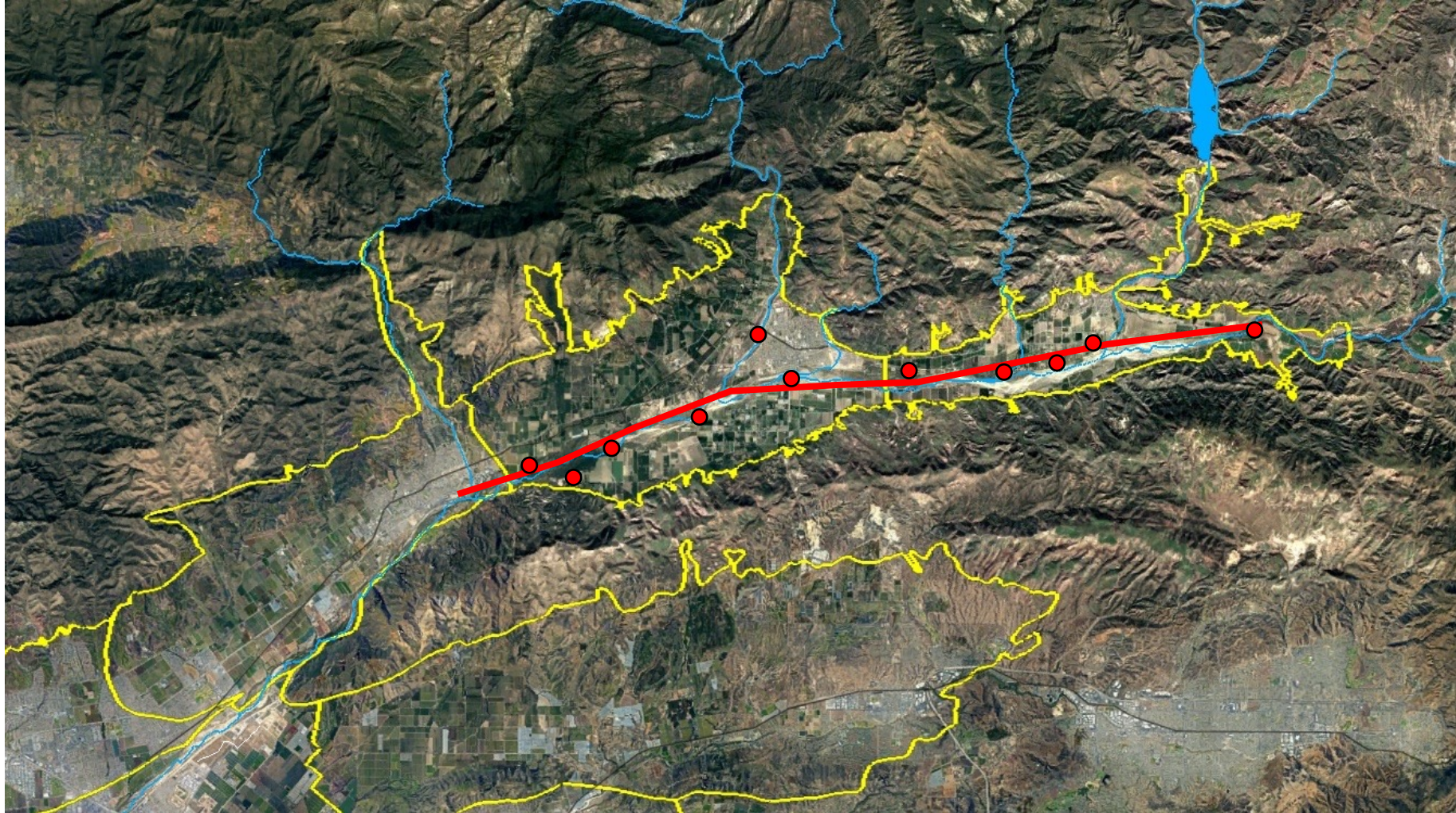


- Increase diversion rate
- Reduce pumping near coast

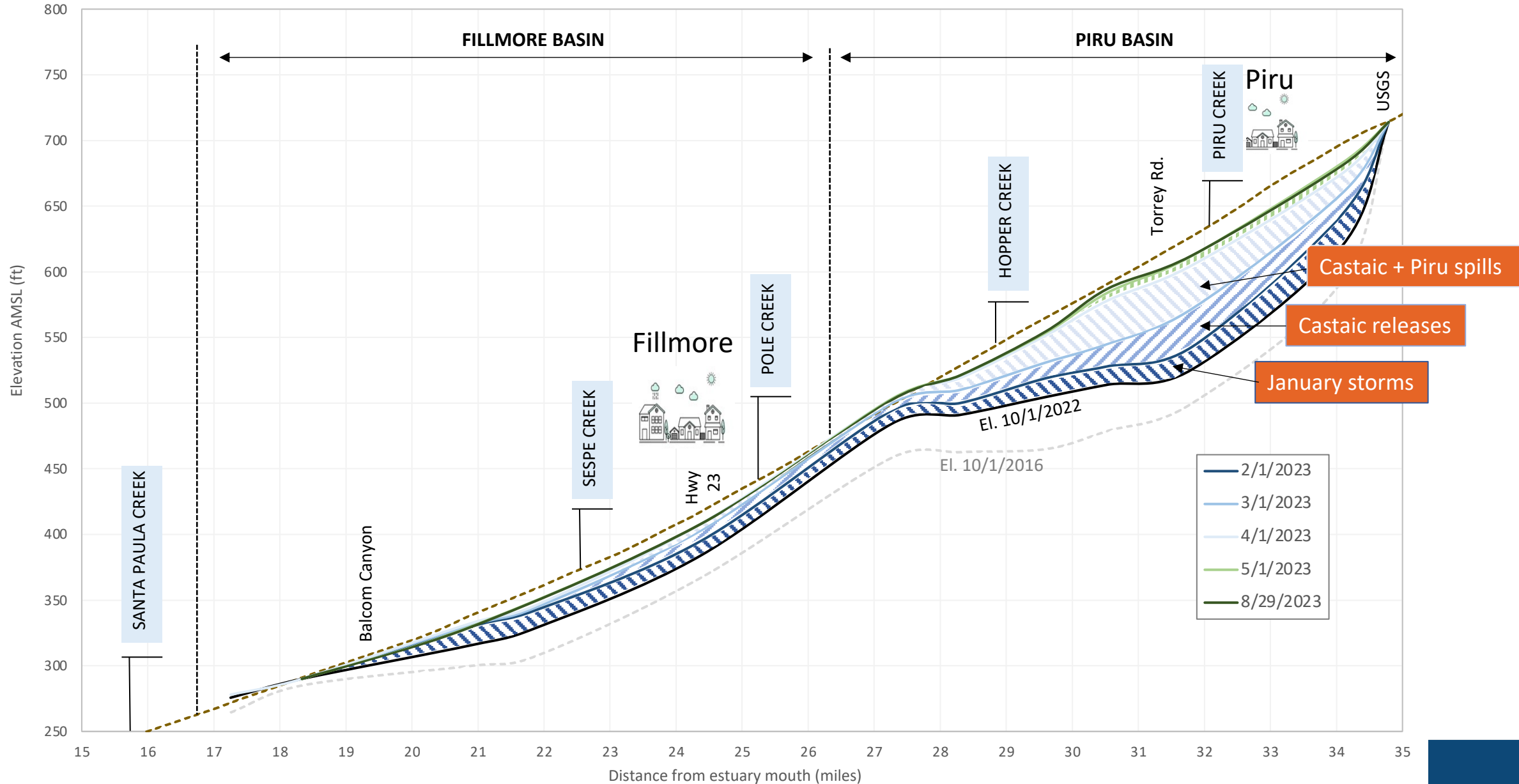
Hard Work is Making a Real Difference



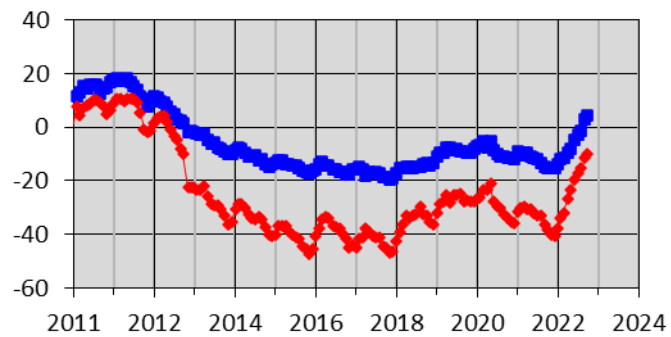
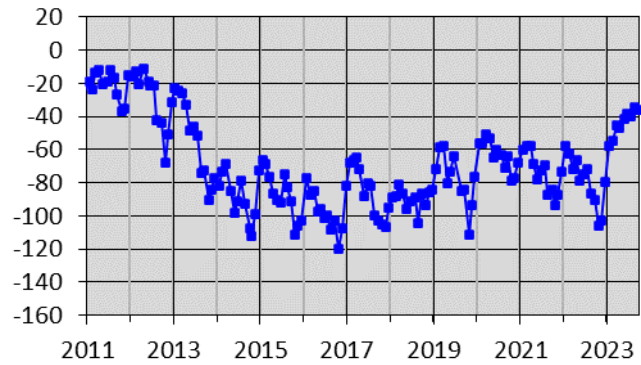
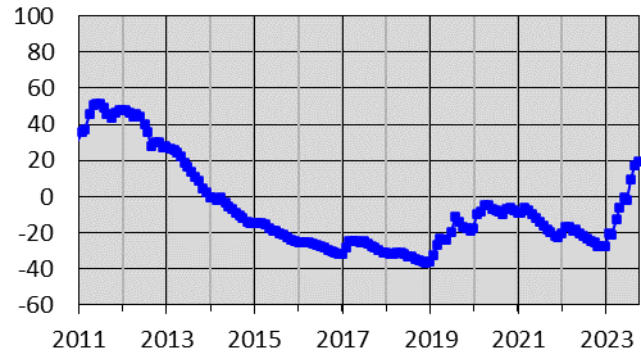
Piru-Fillmore Basins Groundwater Monitoring



Piru-Fillmore Basins are Full



Oxnard Plain/Pleasant Valley Basins are Recovering



—■— 1N/22W-2018 (UAS) —◆— 1N/22W-2014 (LAS)

